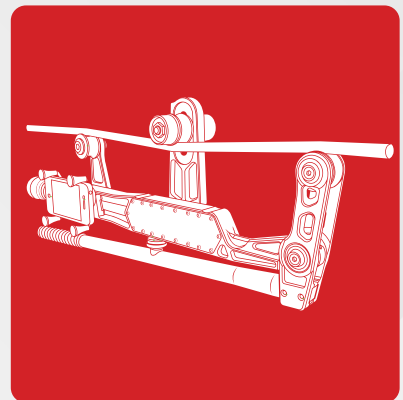
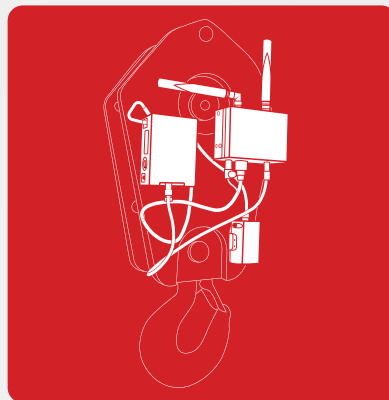
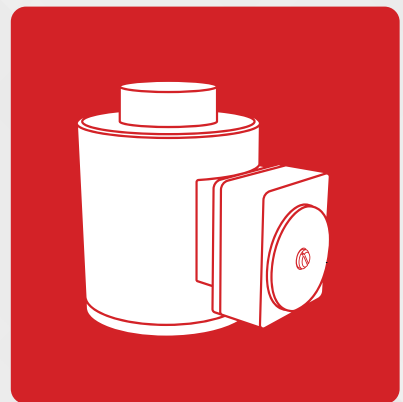
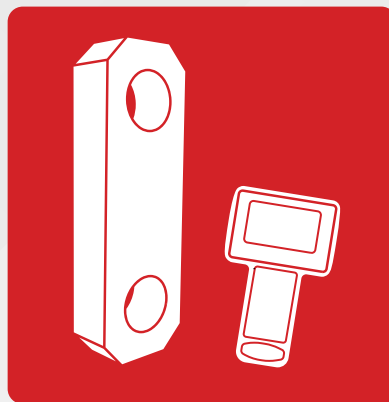


LOAD MONITORING

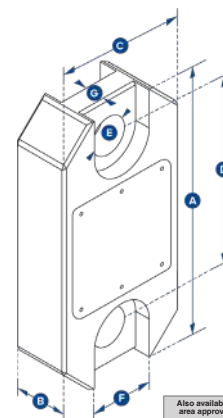
Advanced technology products and software solutions that improve communication and overall safety awareness.



Radiolink Plus



- Capable of weighing and dynamic load monitoring in capacities from 1t to 500t.
- Constructed of lightweight, aerospace grade aluminum.
- Environmentally sealed to IP67 or NEMA6.
- Proprietary 2.4 GHz wireless.
- Update rate of 3Hz and can be easily configured to run at industry-leading speeds of up to 200Hz.
- Remote on/off from handheld display or software.
- ATEX Zones 0, 1 & 2 available.
- Design validated by FEA.
- 2-year warranty.
- DNV-GL Type Approval.
- Complies with ASME B30.26.
- Bluetooth option is available and is supplied with a free HHP app for iOS and Android.

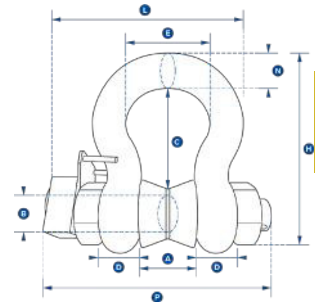


| Part Number SP | RLP1T | RLP2T5 | RLP6T5 | RLP12T | RLP25T | RLP35T | RLP55T | RLP75T | RLP100T | RLP150T | RLP200T | RLP250T | RLP300T | RLP500T |
|--------------------|---|-------------|---------|---------|-------------------------------|---------|---------|---------|---------|---------|---------|---------|---------|-----------|
| Crosby | 2789084 | 2789089 | 2789094 | 2789082 | 2789088 | 2789091 | 2789093 | 2789095 | 2789081 | 2789083 | 2789085 | 2789087 | 2789090 | 2789092 |
| Capacity | (te) 1,000 kg | 2.5 | 6.5 | 12 | 25 | 35 | 55 | 75 | 100 | 150 | 200 | 250 | 300 | 500 |
| | (lb) 2,200 | 5,500 | 14,300 | 26,000 | 55,000 | 77,000 | 120,000 | 165,000 | 220,000 | 330,000 | 440,000 | 550,000 | 660,000 | 1,100,000 |
| Resolution | (te) 0.5 kg | 0.001 | 0.001 | 0.002 | 0.005 | 0.005 | 0.01 | 0.01 | 0.05 | 0.05 | 0.1 | 0.1 | 0.1 | 0.1 |
| | (lb) 1 | 2 | 2 | 5 | 10 | 10 | 20 | 20 | 100 | 100 | 200 | 200 | 200 | 200 |
| Units | (metric) | kg | | | | | | | | | | | | |
| | (imperial) | metric tons | | | | | | | | | | | | |
| Weight | (kg) | 1.5 | 1.5 | 2.4 | 3.7 | 5 | 8.6 | 13 | 16 | 34 | 46 | 82 | 82 | 118 |
| | (lb) | 3.3 | 3.3 | 5.3 | 8.2 | 11 | 19 | 28.7 | 35.3 | 75 | 101.4 | 180.8 | 180.8 | 260 |
| Design Factor | | 12:1 | 7:1 | 7:1 | 7:1 | 5:1 | 5:1 | 5:1 | 5:1 | 5:1 | 4:1 | 5:1 | 4:1 | 5:1 |
| Battery Type | Handheld 2 x AA / Loadcell 4 x AA | | | | | | | | | | | | | |
| Battery Life | Handheld - 40 hours / Loadcell 1200 hours continuous (Loadcell 500 hours if Bluetooth) | | | | | | | | | | | | | |
| Display Type | 240 x 128 pixel Multi-line dot matrix with backlight | | | | | | | | | | | | | |
| Operating Temp. | -10°C to +50°C / 14°F to 122°F | | | | | | | | | | | | | |
| Accuracy | ±0.1% of full scale | | | | | | | | | | | | | |
| Frequency | 2.4 GHz | | | | | | | | | | | | | |
| System Range (max) | 1000 meters / 3280 feet (100 meters / 328 feet if Bluetooth) (500 meters / 1640 feet if ATEX/IECEx) | | | | | | | | | | | | | |
| Data Rate | 3 Hz - up to 200 Hz can be ordered for dynamic load monitoring applications | | | | | | | | | | | | | |
| Protection | IP67 / NEMA6 | | | | | | | | | | | | | |
| Dimension A | (mm) | 204 | 204 | 249 | 305 | 340 | 393 | 424 | 470 | 608 | 670 | 700 | 700 | 806 |
| | (in) | 8.03 | 8.03 | 9.80 | 12.01 | 13.39 | 15.47 | 16.69 | 18.50 | 23.94 | 26.38 | 27.56 | 27.56 | 31.73 |
| Dimension B | (mm) | 43 | 43 | 43 | 47 | 60 | 75 | 75 | 75 | 99 | 99 | 144 | 144 | 150 |
| | (in) | 1.69 | 1.69 | 1.69 | 1.85 | 2.36 | 2.95 | 2.95 | 2.95 | 3.90 | 3.90 | 5.67 | 5.67 | 5.91 |
| Dimension C | (mm) | 104 | 104 | 113 | 113 | 115 | 126 | 180 | 202 | 255 | 303 | 350 | 350 | 426 |
| | (in) | 4.09 | 4.09 | 4.45 | 4.45 | 4.53 | 4.96 | 7.09 | 7.95 | 10.04 | 11.93 | 13.78 | 13.78 | 16.77 |
| Dimension D | (mm) | 146 | 146 | 165 | 193 | 215 | 225 | 230 | 260 | 320 | 360 | 350 | 350 | 450 |
| | (in) | 5.75 | 5.75 | 6.50 | 7.60 | 8.46 | 8.86 | 9.06 | 10.24 | 12.60 | 14.17 | 13.78 | 13.78 | 17.72 |
| Dimension ØE | (mm) | 24.5 | 24.5 | 38 | 47.5 | 55 | 60 | 76 | 76 | 109 | 109 | 145 | 145 | 160 |
| | (in) | 0.96 | 0.96 | 1.50 | 1.87 | 2.17 | 2.36 | 2.99 | 2.99 | 4.29 | 4.29 | 5.71 | 5.71 | 6.30 |
| Dimension F | (mm) | 48 | 48 | 65 | NOT RELEVANT IN THIS CAPACITY | | | | | | | | | |
| | (in) | 1.89 | 1.89 | 2.60 | | | | | | | | | | |
| Dimension G | (mm) | 19 | 19 | 32 | NOT RELEVANT IN THIS CAPACITY | | | | | | | | | |
| | (in) | 0.75 | 0.75 | 1.26 | | | | | | | | | | |
| Crosby Shackle | G2130 | | | | | | G2140 | | | | | | G2160 | |
| Loading Pin Ø (mm) | 19 | 19 | 25 | 35 | 51 | 57 | 57 | 70 | 83 | 95 | 121 | 127 | 152 | 180 |
| | (in) | 3/4 | 3/4 | 1 | 1 3/8 | 2 | 2 1/4 | 2 3/4 | 3 1/4 | 3 3/4 | 4 3/4 | 5 | 6 | 7 1/8 |

Wireless Loadshackle



- Capacities of 3.25t to 500t, as well as being obtainable up to 3000t.
- Wireless range of 1000m or 3280ft.
- Every Loadshackle is proof tested.
- Electronics housed in hard anodized enclosure.
- Environmentally sealed to IP67 or NEMA6.
- Battery life of 1200 hrs from 4 x AA batteries.
- Internal antenna.
- Remote on/off from handheld display or software.
- Supplied with a load-centering bobbin.
- 2-year warranty.
- Complies with ASME B30.26.
- Design validated by FEA.
- ATEX Zones 0, 1 & 2 available.
- Bluetooth option is available and is supplied with a free HHP App for iOS and Android.



| Part Numbers | | WLS3.25T | WLS6.5T | WLS12T | WLS25T | WLS55T | WLS85T | WLS120T | WLS200T | WLS300T | WLS400T |
|--------------------|---|--------------------------------|---------|---------|---------|---------|---------|---------|---------|---------|---------|
| Crosby | | 2789186 | 2789200 | 2789183 | 2789185 | 2789199 | 2789201 | 2789172 | 2789184 | 2789188 | 2789189 |
| Capacity | (te) | 3.25 | 6.5 | 12 | 25 | 55 | 85 | 120 | 200 | 300 | 400 |
| | (lb) | 7,150 | 14,300 | 26,400 | 55,000 | 120,000 | 185,000 | 260,000 | 440,000 | 660,000 | 880,000 |
| Resolution | (te) | 0.005 | 0.005 | 0.01 | 0.02 | 0.05 | 0.05 | 0.1 | 0.2 | 0.5 | 0.5 |
| | (lb) | 10 | 10 | 20 | 50 | 100 | 100 | 200 | 200 | 1000 | 1000 |
| Units | (metric) | metric tons | | | | | | | | | |
| | (imperial) | pounds | | | | | | | | | |
| Weight | (kg) | 2.8 | 3.2 | 8 | 18 | 25 | 85 | 125 | 260 | 405 | 662 |
| | (lb) | 6.16 | 7 | 17.6 | 40 | 55 | 187 | 276 | 573 | 893 | 1459 |
| Design Factor | | 5:1 when used with load bobbin | | | | | | | | | |
| Battery Type | Loadcell 4 x AA Alkaline | | | | | | | | | | |
| Battery Life | Loadcell 1200 hours continuous (500 hours if Bluetooth) | | | | | | | | | | |
| Operating Temp. | -10°C to +50°C / 14°F to 122°F | | | | | | | | | | |
| Accuracy | ±1% full scale | | | | | | | | | | |
| Frequency | 2.4 GHz | | | | | | | | | | |
| System Range (max) | 1000 meters / 3280 feet (100 meters / 328 feet if Bluetooth) (500 meters / 1640 feet if ATEX/IECEx) | | | | | | | | | | |
| Data Rate | 3 updates per second | | | | | | | | | | |
| Protection | IP67 / NEMA6 | | | | | | | | | | |
| Dimension A | (mm) | 26.9 | 36.6 | 51.5 | 73 | 82.5 | 127 | 144 | 180 | 205 | 230 |
| | (in) | 1.06 | 1.44 | 2.03 | 2.87 | 3.25 | 5.00 | 5.66 | 7.09 | 8.07 | 9.06 |
| Dimension ØB | (mm) | 19.1 | 25.4 | 35.1 | 51 | 57 | 83 | 95 | 125 | 150 | 175 |
| | (in) | 0.75 | 1.00 | 1.38 | 2.01 | 2.24 | 3.26 | 3.74 | 4.92 | 5.91 | 6.89 |
| Dimension C | (mm) | 56.9 | 79.7 | 113 | 170 | 189.5 | 317 | 364 | 432.2 | 505 | 547.7 |
| | (in) | 2.24 | 3.14 | 4.45 | 6.69 | 7.46 | 12.48 | 14.33 | 17.02 | 19.88 | 21.56 |
| Dimension D | (mm) | 14.46 | 20.6 | 29.5 | 44.5 | 51 | 80 | 89 | 110 | 120 | 160 |
| | (in) | 0.57 | 0.81 | 1.16 | 1.75 | 2.01 | 3.14 | 3.50 | 4.33 | 4.72 | 6.30 |
| Dimension E | (mm) | 42.9 | 58 | 82.5 | 127 | 146 | 190 | 238 | 280 | 305 | 325 |
| | (in) | 1.69 | 2.28 | 3.25 | 5.00 | 5.75 | 7.48 | 9.37 | 11.02 | 12.01 | 12.80 |
| Dimension H | (mm) | 106 | 148 | 210 | 313 | 348 | 539 | 624 | 769 | 904 | 1006.5 |
| | (in) | 4.17 | 5.83 | 8.27 | 12.32 | 13.70 | 21.22 | 24.56 | 30.28 | 35.59 | 39.63 |
| Dimension L | (mm) | 135 | 156.5 | 201 | 275 | 306 | 393 | 445 | 529.7 | 586.7 | 667.2 |
| | (in) | 5.31 | 6.16 | 7.91 | 10.83 | 12.05 | 15.47 | 17.51 | 20.85 | 23.10 | 26.27 |
| Dimension N | (mm) | 17.5 | 24.6 | 35.1 | 57 | 61 | 85 | 95 | 120 | 140 | 160 |
| | (in) | 0.69 | 0.97 | 1.38 | 2.24 | 2.40 | 3.34 | 3.74 | 4.72 | 5.51 | 6.30 |
| Dimension P | (mm) | 150 | 173 | 222 | 290 | 317 | 448 | 488 | 600 | 657 | 765 |
| | (in) | 5.91 | 6.81 | 8.74 | 11.42 | 12.48 | 17.63 | 19.21 | 23.62 | 25.87 | 30.12 |
| Crosby Shackle | | G2130 | | | | G2140 | | S2135 | | | |

BlueLink



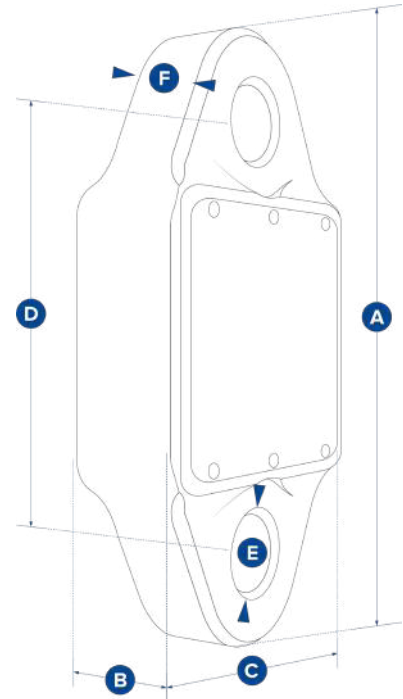
Designed to replace outdated mechanical products still in the field, this 14,300lb (6500kg) dynamometer, the BlueLink, is the latest Crosby Straightpoint product to feature proprietary Bluetooth wireless technology.

The Bluetooth signal effortlessly connects to any iOS or Android smartphone that has our free HHP app installed, providing the operator with a wireless range of up to 328ft or 100m. This allows them to stand in a safe position from the load with no requirement to read a load on the loadcell itself. The app also allows the operator to log data versus time, or on events such as over- or under-load. An adjustable alarm will alert the operator on their smartphone if any overload is occurring.

Rigged using industry standard Crosby G2130 Shackles, the BlueLink has been designed to minimize headroom (6.14 in or 156mm from eye to eye). With a design factor of over 500%, its compact lightweight design does not sacrifice on strength.

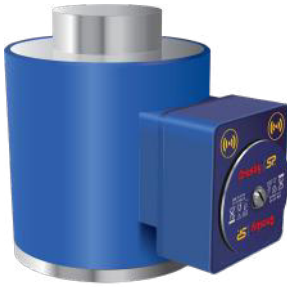
Constructed from high-quality aerospace grade aluminum, which is then hard-anodized, BlueLink features an advanced internal design structure. This design provides the product with an unrivaled strength to weight ratio. The use of a separate internal sealed enclosure administers the loadcell's electronic components with IP67 or NEMA6 environmental protection, even with the battery cover plate missing. All these features makes it an industry-leading compact dynamometer, even more suitable for use in the harshest industrial or leisure environments.

The BlueLink is powered by four standard AA alkaline batteries that provide in excess of 500 hours transmission time. Its internal antenna ensures safe transmissions of loads to an accuracy of $\pm 0.2\%$ FS.

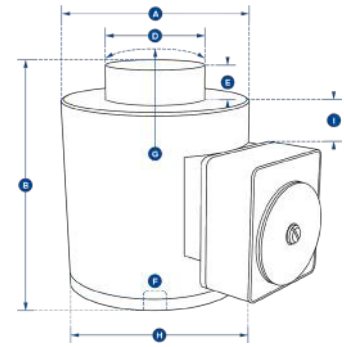


| Part Numbers | BLD6T5 |
|-----------------------|--------------------------------|
| SP | |
| Crosby | 2789218 |
| Capacity | 6.5 t |
| | 14,300 lb |
| Resolution | 0.001 t |
| | 2 lb |
| Weight | 1.5 kg |
| | 3.3 lb |
| Design Factor | 5:1 |
| Battery Type | 4 x AA alkaline batteries |
| Battery Life | 500 hours |
| Operating Temperature | -10°C to +50°C / 14°F to 122°F |
| Accuracy | $\pm 0.2\%$ of full scale |
| Range | 100 meters / 328 feet |
| Data Rate | 3 Hz |
| Protection | IP67 / NEMA6 |
| Dimension A | 224 mm |
| | 8.82 in |
| Dimension B | 44 mm |
| | 1.73 in |
| Dimension C | 113.6 mm |
| | 4.47 in |
| Dimension D | 156 mm |
| | 6.14 in |
| Dimension ØE | 27.5 mm |
| | 1.08 in |
| Dimension F | 33 mm |
| | 1.3 in |

LoadSafe



- Wireless range of 1000m or 3280ft.
- High grade 17-4PH stainless steel, providing excellent strength and corrosion resistance.
- Proprietary 2.4 GHz wireless.
- Accuracy of $\pm 0.1\%$ FS.
- Environmentally sealed to IP67 or NEMA6.
- Stocked capacities up to 1000t.
- Industry leading wireless range up to 1000m or 3280ft.
- Internal antenna.
- ATEX & IECEx version for hazardous area zones 0, 1 & 2 available.
- Battery life of 1200 hrs.
- Compact size.
- Remote on/off from handheld display or software.
- Design validated by FEA.
- Bluetooth option is available and is supplied with a free HHP App for iOS and Android.

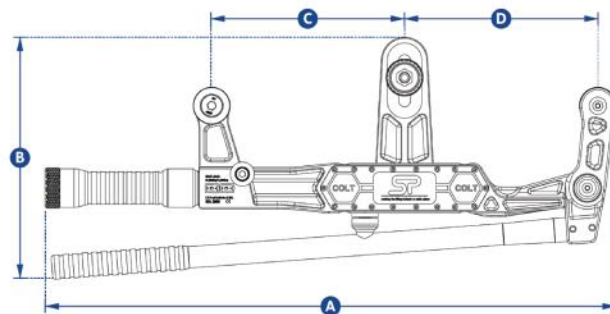
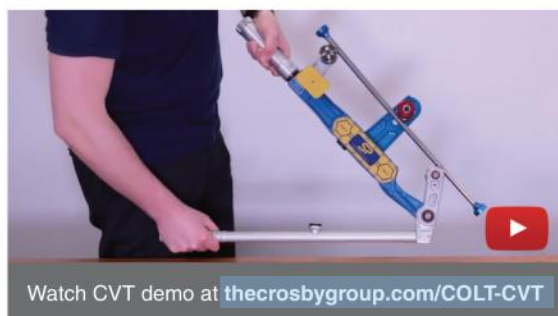
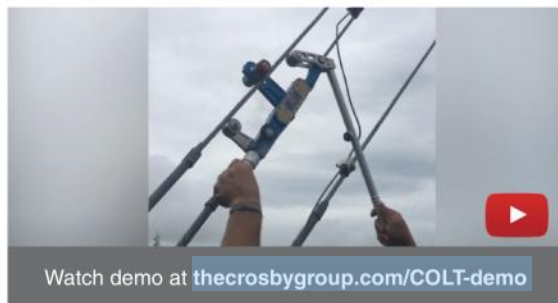


| Part Numbers SP | | WNI5TC | WNI10TC | WNI25TC | WNI50TC | WNI100TC | WNI150TC | WNI300TC | WNI500TC | WNI1000TC |
|---------------------------|------------|---|-----------|-----------|-----------|-----------|-----------|-----------|-----------|-----------|
| Crosby | | 2789197 | 2789191 | 2789193 | 2789196 | 2789190 | 2789192 | 2789194 | 2789195 | 2789138 |
| Capacity | (te) | 5 | 10 | 25 | 50 | 100 | 150 | 300 | 500 | 1000 |
| | (lb) | 11,000 | 22,000 | 55,000 | 110,000 | 220,000 | 330,000 | 660,000 | 1,100,000 | 2,200,000 |
| Resolution | (te) | 0.001 | 0.002 | 0.005 | 0.01 | 0.05 | 0.05 | 0.1 | 0.2 | 0.5 |
| | (lb) | 2 | 5 | 10 | 20 | 100 | 100 | 200 | 500 | 1000 |
| Units | (metric) | metric tons | | | | | | | | |
| | (imperial) | pounds | | | | | | | | |
| Weight | (kg) | 6.2 | 6.2 | 6.2 | 6.2 | 15.5 | 15.5 | 65 | 65 | 172 |
| | (lb) | 13.64 | 13.64 | 13.64 | 13.64 | 34 | 34 | 143 | 143 | 379 |
| Design Factor | | 3:1 | | | | | | | | |
| Battery Type | | Loadcell 4 x AA Alkaline | | | | | | | | |
| Battery Life | | Loadcell 1200 hours continuous (500 hours if Bluetooth) | | | | | | | | |
| Operating Temp. | | -10°C to +50°C / 14°F to 122°F | | | | | | | | |
| Accuracy | | $\pm 0.1\%$ of full scale | | | | | | | | |
| Frequency | | 2.4 GHz | | | | | | | | |
| System Range (max) | | 1000 meters / 3280 feet (100 meters / 328 feet if Bluetooth) (500 meters / 1640 feet if ATEX/IECEx) | | | | | | | | |
| Data Rate | | 3 Hz (configurable to 200Hz) | | | | | | | | |
| Protection | | IP67 / NEMA6 | | | | | | | | |
| Dimension ØA | (mm) | 100 | 100 | 100 | 100 | 152 | 152 | 185 | 185 | 362 |
| | (in) | 3.94 | 3.94 | 3.94 | 3.94 | 5.98 | 5.98 | 7.28 | 7.28 | 14.25 |
| Dimension B | (mm) | 127 | 127 | 127 | 127 | 184 | 184 | 300 | 300 | 310 |
| | (in) | 5.00 | 5.00 | 5.00 | 5.00 | 7.24 | 7.24 | 11.81 | 11.81 | 12.20 |
| Dimension ØD | (mm) | 59 | 59 | 59 | 59 | 80 | 80 | 155 | 155 | 270 |
| | (in) | 2.32 | 2.32 | 2.32 | 2.32 | 3.15 | 3.15 | 6.10 | 6.10 | 10.63 |
| Dimension E | (mm) | 16 | 16 | 16 | 16 | 26 | 26 | 27.5 | 27.5 | 40 |
| | (in) | 0.63 | 0.63 | 0.63 | 0.51 | 1.02 | 1.02 | 1.08 | 1.08 | 1.57 |
| Dimension F | (mm) | M18 x 2.5 | M18 x 2.5 | M18 x 2.5 | M20 x 2.5 | M20 x 2.5 | M20 x 2.5 | M20 x 2.5 | M20 x 2.5 | M30 x 3.5 |
| | (mm) | M18 x 2.5 | M18 x 2.5 | M18 x 2.5 | M20 x 2.5 | M20 x 2.5 | M20 x 2.5 | M20 x 2.5 | M20 x 2.5 | M30 x 3.5 |
| Dimension G | (mm) | 152 | 152 | 152 | 152 | 432 | 432 | 432 | 432 | 950 |
| | (in) | 5.98 | 5.98 | 5.98 | 5.98 | 17.01 | 17.01 | 17.01 | 17.01 | 37.40 |
| Dimension H | (mm) | 158 | 158 | 158 | 158 | 208 | 208 | 241 | 241 | 422 |
| | (in) | 6.22 | 6.22 | 6.22 | 6.22 | 8.19 | 8.19 | 9.49 | 9.49 | 16.61 |
| Dimension I | (mm) | 6 | 6 | 6 | 6 | 7 | 7 | 21.5 | 21.5 | 102 |
| Loadcell top to SA700 top | (in) | 0.23 | 0.23 | 0.23 | 0.23 | 0.27 | 0.27 | 0.27 | 0.54 | 4.02 |

Clamp On Line Tensionmeter (COLT)



- Lightweight wire rope tension meter for fast and accurate measurement of tensions up to 11,000lb or 5000 kg and up to 1 in or 25mm diameter.
- Constructed from aerospace grade aluminum.
- Unlimited wire rope calibration database via Android or iOS app.
- Built-in magnetic smart device holder for on board display.
- Main swivel joints fitted with high-quality bearings.
- Lever ratio of 5.3:1 allows effortless, safe, clamping onto pre-tensioned wire ropes.
- Wireless Bluetooth 4.2 enabling operator to stand a safe distance away, up to 100 m or 328 ft.
- Quick intuitive adjustable center sheave makes changing wire rope sizes fast and easy.
- No easily broken external antenna.
- High waterproof resistant design IP67 or NEMA6 for all weather use.
- Long battery life of 1000 hrs operational time.
- As the library of wire rope diameters and constructions is increased each app user will benefit when they update free of charge.



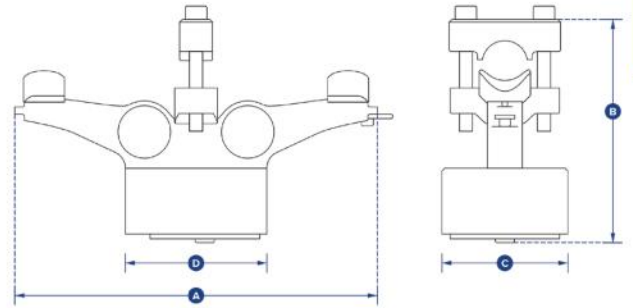
| Part Numbers | COLT5T |
|--------------------|---|
| SP | |
| Crosby | 2789000 |
| Max Load | 5,000 kg |
| | 11,000 lb |
| Resolution | 10 kg |
| | 20 lb |
| Units | kilograms, pounds, metric tons and kilonewtons |
| Min Wire Rope Ø | Ø5 mm |
| | Ø3/16" |
| Max Wire Rope Ø | Ø25 mm |
| | Ø1" |
| Max Line Reduction | 5 mm with a Ø10 mm wire rope |
| | 7/32" with a Ø3/8" wire rope |
| Wire Rope Database | Infinite via Android or iOS app |
| Weight | 3.5 kg |
| | 7.7 lb |
| Battery Type | 2 x 'C' cell batteries |
| Battery Life | 1000 hours Bluetooth transmission time |
| Operating Temp. | -25°C to +70°C / -13°F to +158°F |
| Protection | IP67 / NEMA6 |
| Accuracy | ±3% of full scale if wire rope Ø and construction known |
| Communication | Bluetooth 4.2 |
| Dimension A | 589 mm |
| | 23.2" |
| Dimension B | 254 mm |
| | 10" |
| Dimension C | 200 mm |
| | 7.9" |
| Dimension D | 200 mm |
| | 7.9" |

Specifications assume COLT used on a wire rope with a fixed and flexible end.

Optional for purchase:
 Calibration verification tool (CVT)
 SP - SA507 Crosby 2789225

In order to ensure the measurements of the COLT are as accurate as possible, Crosby SP supplies a calibration verification rod.

Bolt On Line Tensionmeter (BOLT)



2

- Constructed from aerospace-grade aluminum.
- Designed to be mounted in a permanent position on wire rope or cable to accurately monitor measurements of tension up to 20,000lb or 10,000 kg and up to 1.25 in or 32mm diameter.
- Proprietary 2.4 GHz wireless.
- Leading wireless range of 1000m/3280ft when connected to SW-HHP, enabling you to read up to four loadcells simultaneously.
- Unlimited range when connected to BaseStation to monitor remotely.
- Will provide reduced site visits, improve decision making and safely monitor line tensions from any distance from anywhere in the world.
- Unrivalled battery life of 1200 hrs.
- Multiple drop tested from 3 meters or 10 feet.
- Internal antenna.
- Remote on/off from handheld display or software.

| Part Numbers | BOLT10T |
|-----------------|--|
| SP | |
| Crosby | 2789573 |
| Max Load | 10 t |
| | 22000 lb |
| Resolution | 0.01 t |
| | 20 lb |
| Units | kilograms, pounds, metric tons and kilonewtons |
| Min Wire Rope Ø | 16 mm |
| | 5/8" |
| Max Wire Rope Ø | 32 mm |
| | 1 1/4" |
| Weight | 2.1 kg |
| | 4.6 lb |
| Battery Type | 4 x 'AA' cell batteries |
| Battery Life | 1200 hours |
| Operating Temp. | -10°C to +50°C / 14°F to +122°F |
| Protection | IP67 / NEMA6 |
| Accuracy | Typically 3-5% |
| Communication | 2.4 GHz |
| Dimension A | 259 mm |
| | 10.20" |
| Dimension B | 159.1 mm |
| | 6.26" |
| Dimension C | 89 mm |
| | 3.50" |



CROSBY STRAIGHTPOINT TRAINING VIDEOS

- How to pair a loadcell (and multiple loadcells) to a handheld
- How to know the correct number of compression cells required
- How to use the backlight function on a handheld
- How to get accurate loadcell readings at various distances
- Snatch block & loadcell demonstration
- COLT calibration verification tool installation demo
- Plus many more...

Watch now at thecrosbygroup.com/SPvideos

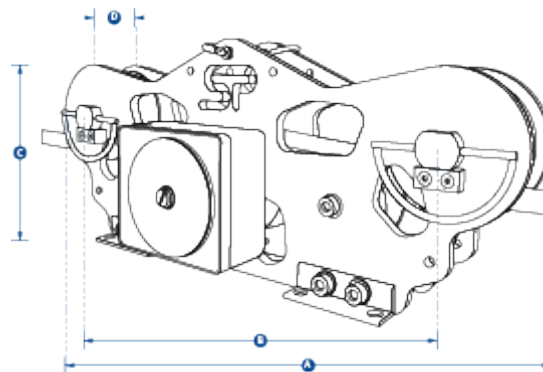
CableSafe



- Simple to use and set up.
- Remote monitoring using smart phone via Bluetooth.
- Rapid tension force measurement - Up to 600m or 1968ft per minute.
- Able to be used in all weather and air quality conditions.
- Providing up to 500 hours battery life.
- Easy to install and replace batteries (4 x AA standard alkaline).
- Fully constructed from aerospace-grade aluminum with anodized finish.
- Five-wheel design, improving accuracy.
- Blue anodized side plates.
- Linchpins are fitted to the top sheave pins, making wire rope installation quick and simple.
- Maintenance free heavy duty bearings.
- Compatible with a wide range of synthetic rope/electrical cable diameters – 4-30mm or 5/32 in – 1 3/16 in.
- IP67 ingress protection or NEMA6 – heavy protection against dust and rain.
- Design validated by FEA.

In addition to the TIMH range, the CableSafe® is the continued evolution of Crosby Straightpoint's running line tensiometers. When used in the field, it will allow the user to monitor tension with exceedingly high levels of accuracy, which ensures rope/cables do not become overstretched or break.

When using a capstan winch to unwind electrical cable from a reel/spool, you will be able to integrate the CableSafe within this set-up to ensure that it is being pulled at a safe tension level. This helps the line maintain its transmissions capability, prevent it becoming a fire hazard risk, and it also stops the need of furthering work in order to remove and replace it. The contractor is gifted with decreased liability, dramatically increasing peace of mind.



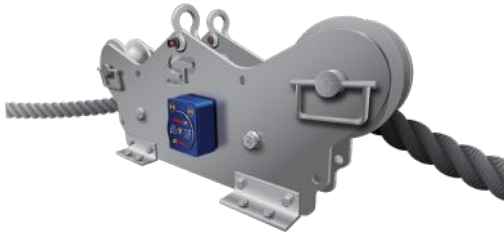
| Part Numbers SP | CableSafe | CableSafe-WD |
|--|---------------------------------|---------------|
| Crosby | 2789219 | 2789399 |
| Capacity | 10 t | 10 t |
| | 22000 lb | 22000 lb |
| Resolution | 0.01 t | 0.01 t |
| | 20 lb | 20 lb |
| Synthetic Rope / Electrical Cable Ø | 4-19 mm | 9.5-30 mm |
| | 5/32"- 3/4" | 3/8"- 1 3/16" |
| Weight | 4.5 kg | 8 kg |
| | 10 lb | 17.6 lb |
| Battery Type | 4 x AA Alkaline | |
| Battery Life | 500 hours | |
| Operating Temp. | -10°C to +50°C / 14°F to 122°F | |
| Accuracy | ±2% of full scale | |
| Range | Bluetooth 100 meters / 328 feet | |
| Protection | IP67 / NEMA6 | |
| Maximum Speed | 600 m per minute | |
| | 1,968 ft per minute | |
| Dimension A | 422 mm | 422 mm |
| | 16.61" | 16.61" |
| Dimension B | 328 mm | 328 mm |
| | 12.91" | 12.91" |
| Dimension C | 152 mm | 152 mm |
| | 5.98" | 5.98" |
| Dimension D | 36.5 mm | 50.5 mm |
| | 1.43" | 2" |

Using CableSafe on cable pulls reduces liabilities on cable installations, making it ideal for the following applications:

- Measure tension when pulling electrical cables – protect against fractures or elongation
- Measuring tension on synthetic rope when erecting delicate structures using gin poles and capstan winch

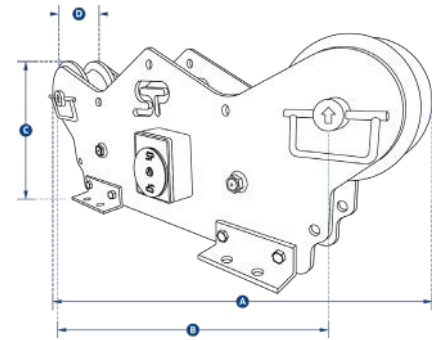
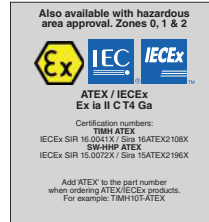
Another example of best use is during the installation of cell phone towers or similar delicate structures. The product helps ensure structure-to-ground ropes which are connected to a gin pole and pulley system. Avoid the unknown through accurate monitoring, especially when risks are high.

Running Line Dynamometer



The TIMH range is a wireless running line tensiometer or RLTM built with dockside, marine, offshore, towage, and salvage applications in mind.

- Fully constructed from corrosion-resistant stainless steel.
- Large range of capacities to 150t and wire rope diameters up to 89mm or 3½ in.
- Measures tension force at speeds up to 20m/min or 65ft/min.
- Five-wheel design, improving accuracy.
- Industry leading battery life of 1200 hrs (wireless).
- Maintenance-free heavy duty bushes.
- Options for lineout and speed available.
- Software available to data log and monitor or analog outputs.
- Cabled system or wireless bluetooth option are available and is supplied with a free HHP app for iOS and Android.
- IP67 or NEMA6 Loadpin.
- Design validated by FEA.



2

| Part Numbers SP | MTIMH10TRD | TIMH10TRD | TIMH25TRD | TIMH56TRD | TIMH80TRD | TIMH150TRD |
|-----------------|------------|--------------|-------------|-----------|-----------------|-------------|
| Crosby | 2789054 | 2789136 | 2789139 | 2789144 | 2789146 | 2789270 |
| Capacity | (te) | 10 | 10 | 25 | 56 | 80 |
| | (lb) | 22,000 | 22,000 | 55,000 | 123,200 | 176,000 |
| Resolution | (te) | 0.01 | 0.01 | 0.02 | 0.05 | 0.1 |
| | (lb) | 20 | 20 | 50 | 100 | 200 |
| Wire Rope Ø | (mm) | 4-19 | 13-19 | 16-26 | 28-38 | 40-52 |
| | (in) | 5/32" - 3/4" | 1/2" - 3/4" | 5/8" - 1" | 1 1/8" - 1 1/2" | 1 5/8" - 2" |
| Weight | (kg) | 9 | 90 | 86 | 81 | 76 |
| | (lb) | 20 | 198 | 190 | 179 | 168 |

Battery Type 4 x AA Alkaline

Battery Life Wireless version 1200 hours continuous

Operating Temp. -10°C to +50°C / 14°F to 122°F

Accuracy ±2% of full scale

Frequency 2.4 GHz

System Range (max) 700 meters / 2,300 feet

Data Rate 3 updates per second

Protection IP67 / NEMA6

Maximum Speed 50 m per minute 20 m per minute

164 ft per minute 65 ft per minute

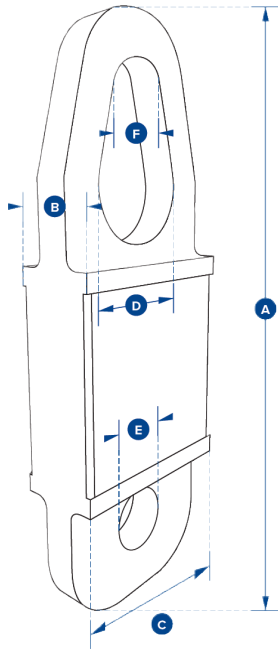
Line out and speed via SW-MWLC software

| | | | | | | | |
|--------------------|------|-------|-------|-------|-------|-------|-------|
| Dimension A | (mm) | 422 | 865 | 865 | 865 | 865 | 1250 |
| | (in) | 16.62 | 34.05 | 34.05 | 34.05 | 34.05 | 49.21 |
| Dimension B | (mm) | 328 | 674 | 674 | 674 | 674 | 1050 |
| | (in) | 12.9 | 26.53 | 26.53 | 26.53 | 26.53 | 41.33 |
| Dimension C | (mm) | 152 | 324 | 324 | 324 | 324 | 416 |
| | (in) | 5.98 | 12.75 | 12.75 | 12.75 | 12.75 | 16.37 |
| Dimension D | (mm) | 36 | 111 | 111 | 111 | 111 | 153 |
| | (in) | 1.4 | 4.37 | 4.37 | 4.37 | 4.37 | 6.02 |

Crosby® SP
Towcell®



- Unique design fits any standard 2 inch tow hitch.
- Unmatched battery life of 500 hrs.
- Waterproof IP67 or NEMA6.
- Internal antenna.
- Compact size and lightweight.
- Proprietary 2.4 GHz wireless communication.
- Design validated by FEA.
- Bluetooth enabled and is supplied with a free HHP app for iOS and Android.



The Crosby Straightpoint Towcell® is a 25kN wireless loadcell, specifically engineered for the emergency services, salvage, and 4x4 industries. The Towcell allows for increased safety and the avoidance of costly overloads by providing real-time monitoring of tensile towing forces during recovery, clearance and salvage efforts.

The Towcell is rugged, lightweight, compact, and can be installed, with ease, onto any tow bar, whether it's a standard 52mm or 2 in ball or pin assembly and is ready to use in seconds.

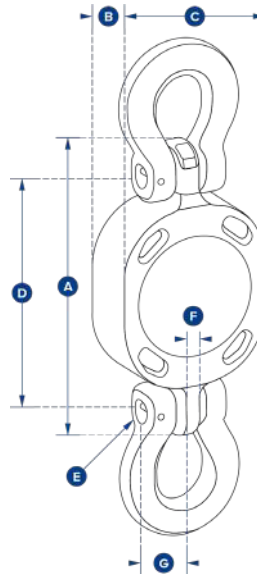
Modeled after Crosby SP's bestselling Radiolink Plus, the Towcell is constructed of high-quality aircraft grade aluminum. It features an advanced internal design structure, providing the product with an unrivaled strength to weight ratio. This optimal balance allows for the use of a separate internally sealed enclosure. This administers the internal electronic components with an IP67 or NEMA6 waterproof environmental protection, even with the battery cover plate missing.

Towcell utilizes an unbreakable internal antenna and boasts an unmatched battery life.

| Part Numbers SP | Towcell - Bluetooth |
|--------------------|--------------------------------|
| Crosby | 2789271 |
| Capacity | 25 kN |
| Resolution | 0.01 kN |
| Weight | 1.4 kg |
| | 3 lb |
| Design Factor | 5:1 |
| Battery Type | 4 x AA Alkaline |
| Battery Life | 500 hours continuous |
| Operating Temp. | -10°C to +50°C / 14°F to 122°F |
| Accuracy | ±0.1% of full scale |
| Frequency | 2.4 GHz |
| System Range (max) | 100 meters / 328 feet |
| Data Rate | 50 Hz |
| Protection | IP67 / NEMA6 |
| Dimension A | 300 mm |
| | 11.81" |
| Dimension B | 43 mm |
| | 1.70" |
| Dimension C | 104 mm |
| | 4.09" |
| Dimension ØD | 51 mm |
| | 2.00" |
| Dimension ØE | 27 mm |
| | 1.06" |
| Dimension ØF | 31 mm |
| | 1.22" |

Only sold in Europe. Does not meet US towing requirements.

ChainSafe



- Designed to work with 10mm chain.
- Unmatched weight-to-strength ratio.
- Update rate of 1Hz and the Bluetooth signal effortlessly connects to any iOS or Android smartphone that has our free HHP App that will alert the operator on their smartphone if any overload is occurring.
- Bluetooth wireless range of 100m/328ft.
- No battery change required.
- Battery life 5 yrs based on 3 hrs use per day.
- Environmentally sealed to IP67/NEMA6.
- Internal antenna.
- Conforms to EN1677:2008.
- Fatigue tested to 30,000 cycles to 1.5x WLL.

| Part Numbers SP | ChainSafe |
|----------------------|--|
| Crosby | 2789536 |
| Capacity | 4 t |
| | 88000 lb |
| Resolution | 0.002 t |
| | 4 lb |
| Weight | 2.5 kg |
| | 5.5 lb |
| Design Factor | 4:1 |
| Battery Type | Lithium Thionyl Chloride (non replaceable) |
| Battery Life | 5 years based on 3 hours use per day |
| Operating Temp. | -10°C to +50°C / 14°F to 122°F |
| Accuracy | +/- 0.2% of full scale |
| Range | 100 meters / 328 feet |
| Data Range | 1 Hz |
| Protection | IP67 / NEMA6 |
| Dimension A | 164 mm |
| | 6.46" |
| Dimension B | 35 mm |
| | 1.38" |
| Dimension C | 85 mm |
| | 3.35" |
| Dimension D | 132 mm |
| | 5.20" |
| Dimension E | 13.2 mm |
| | 0.52" |
| Dimension F | 11 mm |
| | 0.43" |
| Dimension G | 28 mm |
| | 1.10" |
| Recommended Fittings | 3/8" (10mm) G100 Chain fittings |

ChainSafe is designed to be fitted with an array of The Crosby Group's chain fittings, and is an approved wireless tension loadcell capable of load monitoring of capacities up to 4t.

Grab Hooks:



Chain shortener:



Links:



Lashing:



Links:

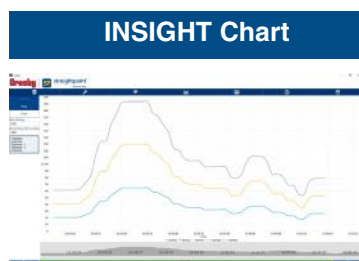
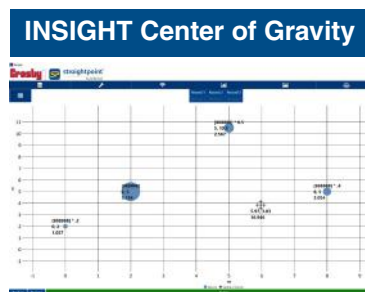


Connectors:



chain fittings are not included

INSIGHT Software



INSIGHT software, supplied with an SW-D USB wireless dongle, allows connection of up to 126 Crosby Straightpoint wireless loadcells simultaneously onto any Windows tablet or laptop.

Insight has four main features:

- **Multi-channel display and data logging mode**
View and log load data from connected loadcells plus totals loads live on screen and directly into a .csv file for later analysis at speeds of up to 200Hz.
- **Visualization mode**
For complicated lifts import a photo of the lift and drag and drop loadcell displays – make the screen look like the lift.
- **Center of gravity mode**
Connect to Crosby SP's range of wireless compression loadcells and use this feature to weigh and calculate the center of gravity of large items and structures.
- **Proof load testing**
Real time graphing of load test and auto generated test certificates.

- Logging at timed intervals, manual or on overload/underload.
- Log data at speeds up to 200Hz.
- Visual and audible alarms indicate overload, underload, low battery, and communications error.
- 100% wireless, no easily damaged cables.
- 700m or 2300ft range allows operator to stand at safe distance from test.
- Connects to any Crosby SP wireless loadcell.
- Automatically creates digitally signed pass or fail certificate.
- Real-time load v time graph display.
- Three weighings per C of G report with averages and statistical analysis to ISO19901.
- Plot loadcell positioning using measurements or GPS coordinates.
- Free extra entry fields for operator, client, wind speed, sea states, and temperature available for reporting.

INSIGHT Software

Numerous proof load testing applications worldwide require a loadcell to verify the load applied. From crane testing, using water bags to pad eye testing, using hydraulic tools, the need to document test procedure and results has never been greater, especially as users of lifting equipment call for more traceability and audit trails.

A proof test is a form of stress test to demonstrate the fitness of a load-bearing structure, and is nominally a non-destructive test. Such a structure is often subjected to loads above that expected in normal use, demonstrating safety and design margin.

This demand has increased so much, Crosby Straightpoint offers a software package designed to connect to any of their wireless loadcells – Proof Test plus.

This impressive package allows the test engineer to wirelessly, at a safe distance, monitor a proof load test and automatically create a pass or fail certificate when testing is complete.

The report is formatted as a PDF, which may then be printed, emailed, or uploaded to the cloud, resulting in a traceable document for both test engineer and end customer.

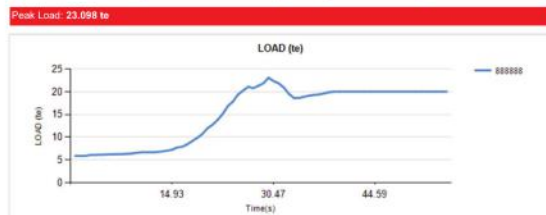
Typical load tests using Crosby SP loadcells include:

- Bollard pull tests
- Tug tests
- Crane test (water bags, block weights)
- Pad eye or fly point testing
- Crash barrier testing
 - Lifting equipment testing
 - Slings, chains, wire rope, hooks
- Construction equipment testing
 - Shoring columns, acrow props, lintels
- Lifting and spreader beam testing
- Hydraulic cylinder load test
- Supplied with SW-D transmitter



ACME Corporation
ACME lifting
Test
Test
PO20 8CA
02392 476273
www.acmelifting.com

| Certificate of Load Test - 10 August 2021 11:59:16 | | | |
|--|----------------------------|----------------------|---------------------------------------|
| Date of Test: | 10 August 2021 11:59:16 | Product Description: | Pad Eye |
| Certification Number: | AL-10001 | Serial or Tag No: | 112255 |
| Company: | Rob Friend | WLL | 20t |
| Address: | Unit 19, Express Way 90012 | Test Method: | Pull |
| Tel: | +006 2543467 | Load Test To: | 20t |
| Contact: | testcustomer@company.com | Duration of Test: | 54.83 seconds |
| Reference Loadcell: | 5m | Notes: | Max load can reach up to m101% of WLL |
| Serial Number: | 885858 | Calibrated On: | (Wednesday, 09 February 2019) |
| Calibrated Unit: | te | WLL: | 20 |
| | | Measuring Unit: | te |



This is to certify that this product described herein has been subjected to the load test.
Caution: Never exceed the rated capacities.

Notes: Test accepted

Signed: Bob Friend

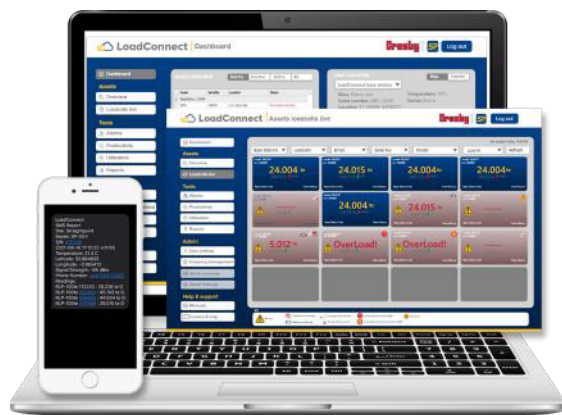
Appointed Person: Bob Friend ID: 1234 Eng

This proof test was carried out using a reference load cell that had exceeded the recommended recalibration interval (12 months).



| Part Numbers SP | INSIGHT med SW-D |
|----------------------------|---------------------------------|
| Crosby | 2789318 |
| IP rating | IP67 / NEMA6 |
| USB Dongle Operating Temp. | -20°C to +70°C / -4°F to 158°F |
| Licence | Licence free |
| Frequency | 2.4 GHz |
| Range | 700 meters / 2,300 feet |
| Loadcell Inputs | Up to 126 |
| PC Requirements | Intel i3 processor with 2GB RAM |
| Operating System | Windows 7 and 10 |

LoadConnect Software



Crosby Straightpoint LoadConnect, connected to BaseStation, is a cloud-based solution to monitor loads and line tensions from any distance and from anywhere in the world. Stay connected, protect assets, reduce site visits, and improve safety.

- Dashboard overview.
- Live load data.
- Error reporting.
- Productivity and utilization graphs.
- Regular email reporting.
- SMS alerts.
- Connect to BOLT to monitor tension on cables.
- Connect to SP loadcells to monitor loads.

BaseStation

How it works:



| Part Numbers SP | BaseStation |
|-----------------------------|---|
| Crosby | 2789574 |
| Required Power Supply | 9 to 28 V DC |
| Radio Frequency | 2.4 GHz (License Free) |
| Maximum Number of Loadcells | 16 |
| Range | Up to 500 meters / 1,640 feet |
| Operating Temperature Range | -10°C to 50°C / 14°F to 122°F |
| Backup Battery Life | 16 hours |
| Input Option | 1x 4-20mA (2 wire) OR 1x mV/V & Wireless |
| Weight | 2.75 kg / 6.06 lb |
| Network Supported | 4G / 3G |
| Frequency Band | LTE-TDD B34/B38/B39/B40/B41 LTE-FDD B1/B2/B3/B4/B5/B7/B8/B12/B13/ B18/B19/B20/B25/B26/B28/B66 UMTS/HSPA+ B1/B2/B4/B5/B6/B8/B19 |
| SIM Type | Micro SIM (NOT INCLUDED) |
| Alert Functionality | via SMS (up to 3 pre defined numbers) Optional subscription to online dashboard |
| IP Rating | IP67 / NEMA6 |
| Dimension | 560 x 260 x 90 mm - Antennas included |

Data option to be enabled on the SIM card used for full functionality.
User configuration required via free software supplied.

Accessories

Crosby Straightpoint's range of wireless accessories may be used with any Crosby SP wireless loadcells

2



Wireless Overload Alarm Module

Part N°s SP SW-OAM Crosby 2789129

This wireless relay module features audio and visual warning indicators. The set point of the unit can be triggered from a single or summed group of up to four Crosby SP wireless loadcells. It contains two relays (NO and NC). NO is for audio and visual indications, while NC is a spare and can be used to control 230V AC / 30VDC 5A systems.



Wireless Scoreboard Display

Part N°s SP SW-SD Crosby 2789132

This 100mm or 4" scoreboard LED display is wireless and operates between 100-240V AC. The numerals are viewable for up to 45m or 150ft, making it perfect for installation on a crane gantry. The SW-SD displays an individual load in metric tons or summed load of up to four Crosby Straightpoint wireless devices.



Wireless Base Station with Analog Output

Part N°s SP SW-BS Crosby 2789314

The SW-BS provides a configurable analog output for any single or summed group of up to 4 loadcells Crosby Straightpoint wireless loadcell and is ideal for integration to a PC, PLC and other data acquisition. Housed in a IP65 enclosure, the output can be selected from current 4-20mA, 2 relay outputs, RS485 ASCII (Configurable) plus an optional CANbus 2.0A or 2.0B output.



Loadcell Transmitter

Part N°s SP SA700C Crosby 2789097

The SA700C transmitter connects to strain gauge transducers such as loadcells, torque sensors and pressure transducers allowing them to form part of a Crosby Straightpoint wireless system. Load data from the SA700C can be received by multiple receivers that include SW-HHP handheld, INSIGHT software or Crosby SP's range of wireless accessories.



Wall or Cab Mount Bracket

Part N°s SP SU3282 Crosby 2789228

Constructed from stainless steel and fitted with a viewing angle adjusting mechanism, the SU3282 bracket fits either the HHP or SW-HHP handheld displays. Ideal for wall or cab mounting, leaving the operators to work safely and hands-free.



External Amplifier

Part N°s SP SA-3420 Crosby 2789096

The SA-3420 external amplifier allows the operator to convert the output of any of the SP cabled loadcell products into a three wire 4-20mA analog output. The weatherproof enclosure is fitted with stainless steel glands and is suitable for connection to a PLC, data logger, or other instrumentation.



Handheld Rubber Boot

Part N°s SP SU4045 Crosby 2789232

Drop tested to one meter at -30°C, this 70SHA rubber boot is purpose molded to fit and protect the HHP and SW-HHP handheld display against impact, especially when it is used in the harshest industrial environments.

HHP 2



The app records total loads, weights and lifts. This feature is useful when a particular measurement(s) is required for later referral. Added to this is the option to set the threshold and measure productivity for each load cell and the device it's rigged to, a crane, for instance, for analysis to see shortfalls and improve performance.

A peak facility can be activated to display the highest force measured alongside the live load reading of four load cells simultaneously plus a total load.

Once measurements are recorded to the app using the load monitoring project record and data log feature, the operator can export the details. The report will include load, time and date, GPS coordinates and project information to either a mobile device or send it to a particular email address in csv format.

- Connect up to four loadcells simultaneously.
- Set lift threshold and measure productivity per shift.
- View in eight different languages.
- Overload screen flash.
- Alarm latching.
- Set and record overload incidents
- Up to 100m or 328ft remote monitoring distance.
- Multiple weight unit measurement options (kN, metric tons, kg, lbs, custom unit).
- Peak hold and display value alongside live readings.
- Data-log report.
- Export data-log report.
- Zero and gross monitoring options.
- User defined resolution setup.

Up to four Crosby Straightpoint, Bluetooth load cells can be connected and monitored by up to eight smartphones, with the HHP2 app installed. It will enable more than one lifting professional to monitor the loads progress and safety, spotting potential dangers or issues from different vantage points.

The HHP2 app's simple and easy-to-use interface will enable the operator to use the app with the utmost efficiency. There are five different measurement units to choose from - tonnes, lbs, kN, kg and a custom unit.

Handheld Plus



- Displays up to 4 loadcells simultaneously.
- Wireless range 1000m or 3280ft (ATEX 500m or 1640ft).
- Low battery warning.
- Signal strength warning.
- Overload counter.
- User settable 90db audible overload alarm.
- Multiple display units (metric tons, lbs, kg, kN).
- 200Hz peak hold.

2

The Handheld Plus is a rugged and versatile digital handheld display. It has an extensive range of features and is suitable for all Crosby Straightpoint loadcell products.

At the heart of the ergonomically designed Handheld Plus is a powerful PCB, providing industry-leading features such as user selectable units of measure (metric tons, lbs, kg, and kN), programmable audible overload alarm (HHP & SW-HHP), peak hold, pre-set tare, and a user resettable (HHP & SW-HHP) overload counter.

This crucial overload alarm counter is a requirement for many safety and quality control departments because it keeps track of overload events, allowing the loadcell in question to be removed from service immediately, following the calibration voiding overload event. The loadcell in question can then be sent out for proper testing and, if necessary, recalibration before re-entering service.

The HHP is suitable for connection via cable to any Crosby SP cabled loadcell product and easily adapted to any other manufacturers' loadcell product with a mv/v output.

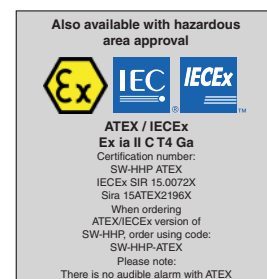
In addition to the standard HHP the SW-HHP is suitable for connection to any Crosby SP wireless loadcell, has a range of up to 1000m/3280ft (ATEX 500m/1640ft) and is supplied as standard with the Radiolink Plus loadcell.

| Part Numbers SP | HHP | SW-HHP | SW-HHP ATEX |
|-----------------|--|--------------------------------|--------------------------------|
| Crosby | 2789030 | 2789126 | 2789442 |
| Battery Type | 2 x AA | 2 x AA | 4 x AA Energizer L91 |
| Battery Life | 100 hours continuous | 40 hours continuous | 40 hours continuous |
| Display Type | 240 x 128 pixel Multi-line dot matrix with backlight | | |
| Operating Temp. | -10°C to +50°C / 14°F to 122°F | -10°C to +50°C / 14°F to 122°F | -10°C to +50°C / 14°F to 122°F |
| Protection | IP65 / NEMA4X | | |
| Excitation | 3.3V | N/A | N/A |
| Max Sensitivity | 3mV/V | N/A | N/A |
| Range | N/A | 1000 m / 3,280 ft | 500 m / 1,640 ft |
| Connectivity | 6-way female binder 723 socket | Wireless 2.4GHz | Wireless 2.4GHz |

Accessories available for the handheld:

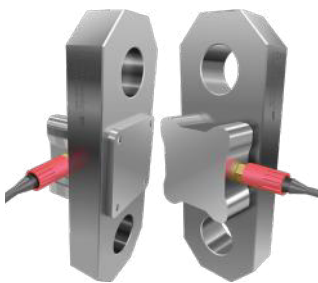
Wall or cab mount bracket
Crosby SP part numbers
SU3282 2789228

Rugged rubber boot
Crosby SP part numbers
SU4045 2789232

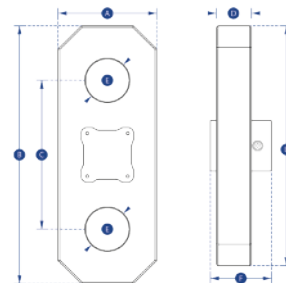


Please note:
There is no audible alarm with ATEX

SubseaLink



- Manufactured for use in subsea or submersible projects.
- On board data-logging option.
- Pressure tested to depth of 2000m/6562ft.
- SubConn connector.
- Environmental protection IP68/NEMA6P.
- Output options include mV/V to the Crosby SP Handheld Plus, 4-20mA or 0-10v analog to a PLC, data-logger or The Multi Operation Survey System (MOSS), RS485 or an integral data-logger storing up to one million readings and powered by an internal battery.
- Constructed from 17-4PH stainless steel.
- Designed to fit with The Crosby Group ROV shackles.
- Option for ROV mounting on the SL body itself.



| Part Numbers SP | SL6T5 | SL12T | SL25T | SL35T | SL55T | SL85T | SL120T |
|-----------------|---------|---------|---------|---------|---------|---------|---------|
| Crosby | 2789352 | 2789353 | 2789354 | 2789355 | 2789356 | 2789357 | 2789358 |
| WLL (te) | 6.5 | 12 | 25 | 35 | 55 | 85 | 120 |
| (lb) | 14,300 | 26,000 | 55,000 | 77,000 | 120,000 | 185,000 | 260,000 |
| Weight (kg) | 7 | 10 | 16 | 22 | 34 | 46 | 67 |
| (lb) | 15 | 23 | 34 | 49 | 75 | 101 | 148 |

Design Factor

5:1

Output

Options for: mV/V / 4-20mA / 0-10v / RS485 or internal data logger

Operating Temp.

-10°C to +50°C / 14°F to 122°F

Accuracy

±0.1% of full scale

Max depth of use

2,000 meters / 6,562 feet

Material

17-4 PH Stainless steel

MTBF to WLL

Typically 50 million cycles

Elongation

Typically <0.4mm / at WLL

| | | | | | | | |
|-------------------|--------------------------------------|-------|-------|-------|-------|-------|-------|
| Dimension A (mm) | 95 | 100 | 130 | 150 | 168 | 190 | 220 |
| (in) | 3.74 | 3.94 | 5.12 | 5.91 | 6.69 | 7.48 | 8.66 |
| Dimension B (mm) | 240 | 300 | 350 | 400 | 450 | 490 | 550 |
| (in) | 9.45 | 11.81 | 13.78 | 15.75 | 17.72 | 19.29 | 21.65 |
| Dimension C (mm) | 180 | 200 | 230 | 250 | 260 | 290 | 335 |
| (in) | 7.09 | 7.87 | 9.06 | 9.84 | 10.24 | 11.42 | 13.19 |
| Dimension D (mm) | 25 | 40 | 45 | 50 | 65 | 75 | 86 |
| (in) | 0.98 | 1.57 | 1.77 | 1.97 | 2.56 | 2.95 | 3.39 |
| Dimension ØE (mm) | 30 | 40 | 55 | 60 | 75 | 88 | 100 |
| (in) | 1.18 | 1.57 | 2.17 | 2.36 | 2.95 | 3.46 | 3.94 |
| Dimension F (mm) | 73 | 88 | 93 | 98 | 113 | 123 | 134 |
| (in) | 2.87 | 3.46 | 3.66 | 3.86 | 4.45 | 4.84 | 5.28 |
| Crosby Shackle | G2140 or G2100 or G2110 ROV shackles | | | | | | |

Data-logger Measurement Rate

Days

1 per second

10

1 per 30 seconds

57

1 per minute

729

1 per 2 minutes

1445

1 per 30 minutes

3423

1 per hour

3600

1 per 2 hours

3694

1 per 8 hours

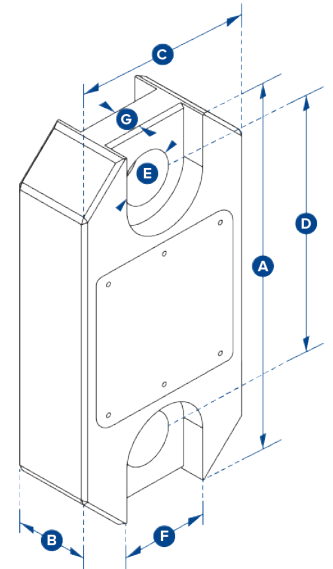
3769

Loadlink Plus



Optional connection to Crosby SP's Handheld Plus part no. HHP 2789030

- Capacity from 1t to 300t.
- Unmatched weight-to-strength ratio.
- 30% lighter than competing dynamometers with the same safety rating.
- Large high resolution 25mm or 1 in LCD display.
- Features full function push button controls for tare, choice of units (lbs, kg, kN, and metric tons), peak hold, preset tare, audible set-point alarm, and an overload counter.
- The highest standard resolution of any digital dynamometer on the market today (5000+ divisions).
- 100Hz peak hold.
- RS-485 serial output.
- 2-year warranty.
- DNV-GL Type Approval.
- Design validated by FEA.
- Complies with ASME B30.26.



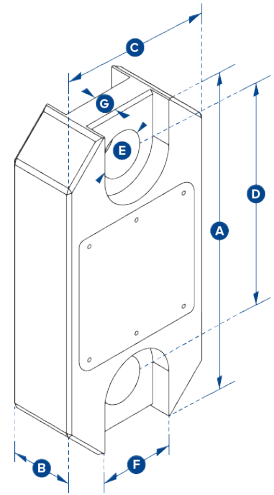
2

| Part Numbers SP | LLP1T | LLP2T5 | LLP6T5 | LLP12T | LLP25T | LLP35T | LLP55T | LLP75T | LLP100T | LLP150T | LLP200T | LLP250T | LLP300T |
|--------------------|--------------------------------|---------|---------|---------|---------|---------|---------|---------|---------|---------|---------|---------|---------|
| Crosby | 2789042 | 2789046 | 2789050 | 2789040 | 2789045 | 2789048 | 2789049 | 2789051 | 2789039 | 2789041 | 2789043 | 2789044 | 2789047 |
| Capacity (te) | 1000 kg | 2.5 | 6.5 | 12 | 25 | 35 | 55 | 75 | 100 | 150 | 200 | 250 | 300 |
| (lb) | 2,200 | 5,500 | 14,300 | 26,000 | 55,000 | 77,000 | 120,000 | 165,000 | 220,000 | 330,000 | 440,000 | 550,000 | 660,000 |
| Resolution (te) | 0.5kg | 0.001 | 0.001 | 0.002 | 0.005 | 0.005 | 0.01 | 0.01 | 0.05 | 0.05 | 0.1 | 0.1 | 0.1 |
| (lb) | 1 | 2 | 2 | 5 | 10 | 10 | 20 | 20 | 100 | 100 | 200 | 200 | 200 |
| Units (metric) | kg | | | | | | | | | | | | |
| (imperial) | pounds | | | | | | | | | | | | |
| Weight (kg) | 1.5 | 1.5 | 2.4 | 3.7 | 5 | 8.6 | 13 | 16 | 34 | 46 | 82 | 82 | 118 |
| (lb) | 3.3 | 3.3 | 5.3 | 8.2 | 11 | 19 | 28.7 | 35.3 | 75 | 101.4 | 180.8 | 180.8 | 260 |
| Design Factor | 12:1 | 7:1 | 7:1 | 7:1 | 5:1 | 5:1 | 5:1 | 5:1 | 5:1 | 4:1 | 5:1 | 4:1 | 5:1 |
| Battery Type | 9v PP3 | | | | | | | | | | | | |
| Battery Life | 80 hours continuous | | | | | | | | | | | | |
| Display Type | 6 digit 25mm or 1" LCD | | | | | | | | | | | | |
| Operating Temp. | -10°C to +50°C / 14°F to 122°F | | | | | | | | | | | | |
| Accuracy | ±0.1% of full scale | | | | | | | | | | | | |
| Protection | IP65 / NEMA4X | | | | | | | | | | | | |
| Dimension A (mm) | 204 | 204 | 249 | 305 | 340 | 393 | 424 | 470 | 608 | 670 | 700 | 700 | 806 |
| (in) | 8.03 | 8.03 | 9.80 | 12.01 | 13.39 | 15.47 | 16.69 | 18.50 | 23.94 | 26.38 | 27.56 | 27.56 | 31.73 |
| Dimension B (mm) | 43 | 43 | 43 | 47 | 60 | 75 | 75 | 75 | 99 | 99 | 144 | 144 | 150 |
| (in) | 1.69 | 1.69 | 1.69 | 1.85 | 2.36 | 2.95 | 2.95 | 2.95 | 3.90 | 3.90 | 5.67 | 5.67 | 5.91 |
| Dimension C (mm) | 104 | 104 | 113 | 113 | 115 | 126 | 180 | 202 | 255 | 303 | 350 | 350 | 426 |
| (in) | 4.09 | 4.09 | 4.45 | 4.45 | 4.53 | 4.96 | 7.09 | 7.95 | 10.04 | 11.93 | 13.78 | 13.78 | 16.77 |
| Dimension D (mm) | 146 | 146 | 165 | 193 | 215 | 225 | 230 | 260 | 320 | 360 | 350 | 350 | 350 |
| (in) | 5.75 | 5.75 | 6.50 | 7.60 | 8.46 | 8.86 | 9.06 | 10.24 | 12.60 | 14.17 | 13.78 | 13.78 | 13.78 |
| Dimension ØE (mm) | 24.5 | 24.5 | 38 | 47.5 | 55 | 60 | 76 | 76 | 109 | 109 | 145 | 145 | 160 |
| (in) | 0.96 | 0.96 | 1.50 | 1.87 | 2.17 | 2.36 | 2.99 | 2.99 | 4.29 | 4.29 | 5.71 | 5.71 | 6.30 |
| Dimension F (mm) | 48 | 48 | 66 | 66 | 66 | 66 | 66 | 66 | 66 | 66 | 66 | 66 | 66 |
| (in) | 1.89 | 1.89 | 2.60 | 2.60 | 2.60 | 2.60 | 2.60 | 2.60 | 2.60 | 2.60 | 2.60 | 2.60 | 2.60 |
| Dimension G (mm) | 19 | 19 | 32 | 32 | 32 | 32 | 32 | 32 | 32 | 32 | 32 | 32 | 32 |
| (in) | 0.75 | 0.75 | 1.26 | 1.26 | 1.26 | 1.26 | 1.26 | 1.26 | 1.26 | 1.26 | 1.26 | 1.26 | 1.26 |
| Crosby Shackle | G2130 | | | | | | G2140 | | | | | | |
| Loading Pin Ø (mm) | 19 | 19 | 25 | 35 | 51 | 57 | 57 | 70 | 83 | 95 | 121 | 127 | 152 |
| (in) | 3/4 | 3/4 | 1 | 1 3/8 | 2 | 2 1/4 | 2 1/4 | 2 3/4 | 3 1/4 | 3 3/4 | 4 3/4 | 5 | 6 |

Wirelink Plus



- Available in capacities ranging from 1 to 300 metric tons.
- The non-indicating version of Crosby SP's popular Radiolink Plus and Loadlink Plus digital dynamometer tension loadcells.
- Multiple output options to include mV/V, analog out, ASCII, MODBUS RTU, and CAN-BUS.
- Constructed of lightweight, aerospace grade aluminum.
- Available with IP68 environmental protection.
- supplied with a 10-meter cable as standard, however, usable cable length varies greatly with lengths available to 1,500 meters depending on output format.
- Options for subsea use available.
- 2-year warranty.
- DNV-GL Type Approval.
- Complies with ASME B30.26.



| Part Numbers SP | WLP1T | WLP2T5 | WLP6T5 | WLP12T | WLP25T | WLP35T | WLP55T | WLP75T | WLP100T | WLP150T | WLP200T | WLP250T | WLP300T |
|--------------------|--------------------------------|-------------|---------|-------------------------------|---------|---------|---------|---------|---------|---------|---------|---------|---------|
| Crosby | 2789154 | 2789158 | 2789273 | 2789152 | 2789157 | 2789160 | 2789269 | 2789161 | 2789151 | 2789153 | 2789155 | 2789156 | 2789159 |
| Capacity (te) | 1000 kg | 2.5 | 6.5 | 12 | 25 | 35 | 55 | 75 | 100 | 150 | 200 | 250 | 300 |
| (lb) | 2,200 | 5,500 | 14,300 | 26,000 | 55,000 | 77,000 | 120,000 | 165,000 | 220,000 | 330,000 | 440,000 | 550,000 | 660,000 |
| Resolution (te) | 0.5 kg | 0.001 | 0.001 | 0.002 | 0.005 | 0.005 | 0.01 | 0.01 | 0.05 | 0.05 | 0.1 | 0.1 | 0.1 |
| (lb) | 1 | 2 | 2 | 5 | 10 | 10 | 20 | 20 | 100 | 100 | 200 | 200 | 200 |
| Units (metric) | kg | metric tons | | | | | | | | | | | |
| (imperial) | pounds | pounds | | | | | | | | | | | |
| Weight (kg) | 1.5 | 1.5 | 2.4 | 3.7 | 5 | 8.6 | 13 | 16 | 34 | 46 | 82 | 82 | 118 |
| (lb) | 3.3 | 3.3 | 5.3 | 8.2 | 11 | 19 | 28.7 | 35.3 | 75 | 101.4 | 180.8 | 180.8 | 260 |
| Design Factor | 12:1 | 7:1 | 7:1 | 7:1 | 5:1 | 5:1 | 5:1 | 5:1 | 5:1 | 4:1 | 5:1 | 4:1 | 5:1 |
| Operating Temp. | -10°C to +50°C / 14°F to 122°F | | | | | | | | | | | | |
| Accuracy | ±0.1% of full scale | | | | | | | | | | | | |
| Protection | IP67 / NEMA6 | | | | | | | | | | | | |
| Dimension A (mm) | 204 | 204 | 249 | 305 | 340 | 393 | 424 | 470 | 608 | 670 | 700 | 700 | 806 |
| (in) | 8.03 | 8.03 | 9.80 | 12.01 | 13.39 | 15.47 | 16.69 | 18.50 | 23.94 | 26.38 | 27.56 | 27.56 | 31.73 |
| Dimension B (mm) | 43 | 43 | 43 | 47 | 60 | 75 | 75 | 75 | 99 | 99 | 144 | 144 | 150 |
| (in) | 1.69 | 1.69 | 1.69 | 1.85 | 2.36 | 2.95 | 2.95 | 2.95 | 3.90 | 3.90 | 5.67 | 5.67 | 5.91 |
| Dimension C (mm) | 104 | 104 | 113 | 113 | 115 | 126 | 180 | 202 | 255 | 303 | 350 | 350 | 426 |
| (in) | 4.09 | 4.09 | 4.45 | 4.45 | 4.53 | 4.96 | 7.09 | 7.95 | 10.04 | 11.93 | 13.78 | 13.78 | 16.77 |
| Dimension D (mm) | 146 | 146 | 165 | 193 | 215 | 225 | 230 | 260 | 320 | 360 | 350 | 350 | 350 |
| (in) | 5.75 | 5.75 | 6.50 | 7.60 | 8.46 | 8.86 | 9.06 | 10.24 | 12.60 | 14.17 | 13.78 | 13.78 | 13.78 |
| Dimension ØE (mm) | 24.5 | 24.5 | 38 | 47.5 | 55 | 60 | 76 | 76 | 109 | 109 | 145 | 145 | 160 |
| (in) | 0.96 | 0.96 | 1.50 | 1.87 | 2.17 | 2.36 | 2.99 | 2.99 | 4.29 | 4.29 | 5.71 | 5.71 | 6.30 |
| Dimension F (mm) | 48 | 48 | 65 | Not relevant in this capacity | | | | | | | | | |
| (in) | 1.89 | 1.89 | 2.60 | | | | | | | | | | |
| Dimension G (mm) | 19 | 19 | 32 | Not relevant in this capacity | | | | | | | | | |
| (in) | 0.75 | 0.75 | 1.26 | | | | | | | | | | |
| Crosby Shackle | G2130 | | | | | | G2140 | | | | | | |
| Loading Pin Ø (mm) | 19 | 19 | 25 | 35 | 51 | 57 | 57 | 70 | 83 | 95 | 121 | 127 | 152 |
| (in) | 3/4 | 3/4 | 1 | 1 3/8 | 2 | 2 1/4 | 2 1/4 | 2 3/4 | 3 1/4 | 3 3/4 | 4 3/4 | 5 | 6 |

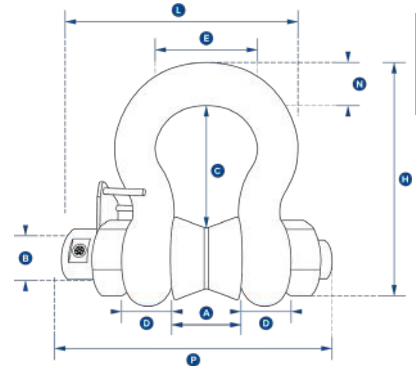
| Part Number | Description |
|-------------|--------------------------------|
| ICA1 | 3 wire 0-10v analogue output |
| ICA2 | 3 wire 0-5v analogue output |
| ICA3 | 4 wire +/- 10v analogue output |
| ICA4 | 3 wire 4-20mA analogue output |
| ICA5 | 2 wire 4-20mA analogue output |

Loadshackle



Requires connection to Crosby Straightpoint's Handheld Plus (HHP) or External Amplifier range (SA-3420) that can be configured to provide 4-20mA output for PLC or data logger integration.

- Capacities of 3.25t to 400t, as well as being obtainable up to 3000t.
- Compact size, low headroom, lightweight.
- Every Loadshackle is proof tested.
- Utilizes the same advanced microprocessor based electronics as Crosby SP products.
- Unrivalled resolution.
- Environmentally sealed to IP67 or NEMA6.
- Advanced options available for subsea applications.
- Manufactured using Crosby 2130 Carbon and 2140 Alloy Bolt Type Anchor industry leading shackles.
- Configured with output formats to include mV/V, RS-422, RS-485, utilizing the ASCII, MODBUS RTU, and CAN-BUS protocols or supplied with integral amplifier allowing analog outputs such as 4-20mA, 0-10v, 0-5v etc.
- mv/v or analog signal options.
- Design validated by FEA.

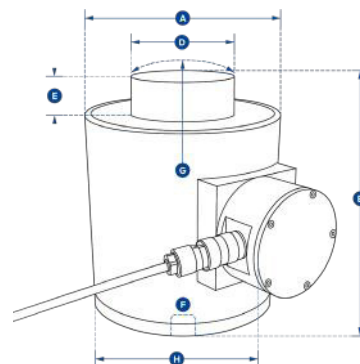


| Part Numbers SP | | SLB 3.25T | SLB6.5T | SLB12T | SLB25T | SLB55T | SLB85T | SLB120T | SLB200T | SLB300T | SLB400T |
|--------------------|------------|---|---------|---------|---------|---------|---------|---------|---------|---------|---------|
| Crosby | | 2789106 | 2789111 | 2789103 | 2789105 | 2789110 | 2789112 | 2789102 | 2789104 | 2789107 | 2789108 |
| Capacity | (te) | 3.25 | 6.5 | 12 | 25 | 55 | 85 | 120 | 200 | 300 | 400 |
| | (lb) | 7,150 | 14,300 | 26,400 | 55,000 | 120,000 | 185,000 | 260,000 | 440,000 | 660,000 | 880,000 |
| Resolution | (te) | 0.005 | 0.005 | 0.01 | 0.02 | 0.05 | 0.05 | 0.1 | 0.2 | 0.5 | 0.5 |
| | (lb) | 10 | 10 | 20 | 50 | 100 | 100 | 200 | 200 | 1000 | 1000 |
| Units | (metric) | metric tons | | | | | | | | | |
| | (imperial) | pounds | | | | | | | | | |
| Weight | (kg) | 2.8 | 3.2 | 8 | 18 | 25 | 85 | 125 | 260 | 405 | 662 |
| | (lb) | 6.16 | 7 | 17.6 | 40 | 55 | 187 | 276 | 573 | 893 | 1459 |
| Design Factor | | 5:1 when used with load bobbin | | | | | | | | | |
| Operating Temp. | | -10°C to +50°C / 14°F to 122°F | | | | | | | | | |
| Accuracy | | ±1% of full scale | | | | | | | | | |
| Protection | | IP67 std [or sub sea as POA option] / NEMA6 | | | | | | | | | |
| Dimension A | (mm) | 26.9 | 36.6 | 51.5 | 73 | 82.5 | 127 | 144 | 180 | 205 | 230 |
| | (in) | 1.06 | 1.44 | 2.03 | 2.87 | 3.25 | 5.00 | 5.66 | 7.09 | 8.07 | 9.06 |
| Dimension ØB | (mm) | 19.1 | 25.4 | 35.1 | 51 | 57 | 83 | 95 | 125 | 150 | 175 |
| | (in) | 0.75 | 1.00 | 1.38 | 2.01 | 2.24 | 3.26 | 3.74 | 4.92 | 5.91 | 6.89 |
| Dimension C | (mm) | 56.9 | 79.7 | 113 | 170 | 189.5 | 317 | 364 | 432.2 | 505 | 547.7 |
| | (in) | 2.24 | 3.14 | 4.45 | 6.69 | 7.46 | 12.48 | 14.33 | 17.02 | 19.88 | 21.56 |
| Dimension D | (mm) | 14.46 | 20.6 | 29.5 | 44.5 | 51 | 80 | 89 | 110 | 120 | 160 |
| | (in) | 0.57 | 0.81 | 1.16 | 1.75 | 2.01 | 3.14 | 3.50 | 4.33 | 4.72 | 6.30 |
| Dimension E | (mm) | 42.9 | 58 | 82.5 | 127 | 146 | 190 | 238 | 280 | 305 | 325 |
| | (in) | 1.69 | 2.28 | 3.25 | 5.00 | 5.75 | 7.48 | 9.37 | 11.02 | 12.01 | 12.80 |
| Dimension H | (mm) | 106 | 148 | 210 | 313 | 348 | 539 | 624 | 769 | 904 | 1006.5 |
| | (in) | 4.17 | 5.83 | 8.27 | 12.32 | 13.70 | 21.22 | 24.56 | 30.28 | 35.59 | 39.63 |
| Dimension L | (mm) | 125 | 146.5 | 191 | 265 | 296 | 384 | 434 | 519.7 | 576.7 | 657.2 |
| | (in) | 4.92 | 5.77 | 7.52 | 10.43 | 11.65 | 15.11 | 17.12 | 20.46 | 22.7 | 25.87 |
| Dimension N | (mm) | 17.5 | 24.6 | 35.1 | 57 | 61 | 85 | 95 | 120 | 140 | 160 |
| | (in) | 0.69 | 0.97 | 1.38 | 2.24 | 2.40 | 3.34 | 3.74 | 4.72 | 5.51 | 6.30 |
| Dimension P | (mm) | 140 | 163 | 212 | 280 | 307 | 438 | 478 | 590 | 647 | 755 |
| | (in) | 5.51 | 6.42 | 8.35 | 11.02 | 12.09 | 17.24 | 18.81 | 23.23 | 25.47 | 29.72 |
| Crosby Shackle | | G2130 | | | | G2140 | S2135 | | | | |

Compression Loadcell



- Ranges from 5te to 1000te.
- High grade stainless steel, offering excellent strength and anti-corrosion properties.
- Can be supplied with optional loadcaps.
- Environmentally sealed to IP67 or NEMA6.
- Optional analog outputs.
- Lightweight, compact size.
- 10m or 30ft cable supplied as standard (other lengths available).
- Custom versions available.
- Design validated by FEA.



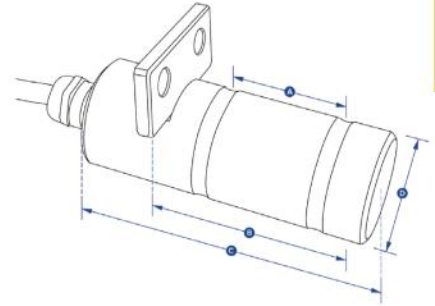
Requires connection to Crosby Straightpoint's Handheld Plus (HHP) or External Amplifier range (SA-3420) that can be configured to provide 4-20mA output for PLC or data logger integration.

| Part Numbers SP | NI5TC | NI10TC | NI25TC | NI50TC | NI100TC | NI150TC | NI300TC | NI500TC | NI1000TC |
|-------------------|--------------------------------|-------------|-----------|-----------|-----------|-----------|-----------|-----------|-----------|
| Crosby | 2789068 | 2789062 | 2789065 | 2789067 | 2789061 | 2789063 | 2789064 | 2789066 | 2789275 |
| Capacity | (te) 5 | 10 | 25 | 50 | 100 | 150 | 300 | 500 | 1000 |
| | (lb) 11,000 | 22,000 | 55,000 | 110,000 | 220,000 | 330,000 | 660,000 | 1,100,000 | 2,200,000 |
| Resolution | (te) 0.001 | 0.002 | 0.005 | 0.01 | 0.05 | 0.05 | 0.1 | 0.2 | 0.5 |
| | (lb) 2 | 5 | 10 | 20 | 100 | 100 | 200 | 500 | 1000 |
| Units | (metric) | metric tons | | | | | | | |
| | (imperial) | pounds | | | | | | | |
| Weight | (kg) 6.2 | 6.2 | 6.2 | 6.2 | 15.5 | 15.5 | 65 | 65 | 172 |
| | (lb) 13.64 | 13.64 | 13.64 | 13.64 | 34 | 34 | 143 | 143 | 379 |
| Design Factor | 3:1 | | | | | | | | |
| Operating Temp. | -10°C to +50°C / 14°F to 122°F | | | | | | | | |
| Accuracy | ±0.1% of full scale | | | | | | | | |
| Protection | IP67 / NEMA6 | | | | | | | | |
| Dimension ØA (mm) | 100 | 100 | 100 | 100 | 152 | 152 | 185 | 185 | 362 |
| | (in) 3.94 | 3.94 | 3.94 | 3.94 | 5.98 | 5.98 | 7.28 | 7.28 | 14.25 |
| Dimension B (mm) | 127 | 127 | 127 | 127 | 184 | 184 | 300 | 300 | 310 |
| | (in) 5.00 | 5.00 | 5.00 | 5.00 | 7.24 | 7.24 | 11.81 | 11.81 | 12.20 |
| Dimension ØD (mm) | 59 | 59 | 59 | 59 | 80 | 80 | 155 | 155 | 270 |
| | (in) 2.32 | 2.32 | 2.32 | 2.32 | 3.15 | 3.15 | 6.10 | 6.10 | 10.63 |
| Dimension E (mm) | 16 | 16 | 16 | 16 | 26 | 26 | 27.5 | 27.5 | 40 |
| | (in) 0.63 | 0.63 | 0.63 | 0.51 | 1.02 | 1.02 | 1.08 | 1.08 | 1.57 |
| Dimension F (mm) | M18 x 2.5 | M18 x 2.5 | M18 x 2.5 | M20 x 2.5 | M20 x 2.5 | M20 x 2.5 | M20 x 2.5 | M20 x 2.5 | M30 x 3.5 |
| | (mm) M18 x 2.5 | M18 x 2.5 | M18 x 2.5 | M20 x 2.5 | M20 x 2.5 | M20 x 2.5 | M20 x 2.5 | M20 x 2.5 | M30 x 3.5 |
| Dimension G (mm) | 152 | 152 | 152 | 152 | 432 | 432 | 432 | 432 | 950 |
| | (in) 5.98 | 5.98 | 5.98 | 5.98 | 17.01 | 17.01 | 17.01 | 17.01 | 37.40 |
| Dimension H (mm) | 158 | 158 | 158 | 158 | 204 | 204 | 237 | 237 | 416 |
| | (in) 6.22 | 6.22 | 6.22 | 6.22 | 8.03 | 8.03 | 9.33 | 9.33 | 16.38 |

Loadpin



- Designed for use in applications where an end of line loadcell cannot be used, meaning an integrated solution is required.
- High tensile stainless steel.
- Supplied complete with an anti-rotation plate as a cabled or wireless solution.
- Built to withstand the harshest environments in industries such as marine and offshore oil and gas.
- Suitable for use in exposed situations and can also be supplied to withstand immersion in seawater at extreme depths.
- Supplied with a 10 meter or 32ft cable as standard, however, usable cable length varies greatly with lengths available to 1500 meters or 4900ft, depending on output format.
- Include mV/V, RS-485, utilizing the ASCII, MODBUS RTU and CAN-BUS protocols or an analog output such as 4-20mA for PLC integration.
- Design validated by FEA.



Note: Please advise cable configuration on order – Radial or axial pin exit. If you require a Loadpin to a particular size and design, download Crosby Straightpoint's Loadpin questionnaire and return, POA.
thecrosbygroup.com/loadpin



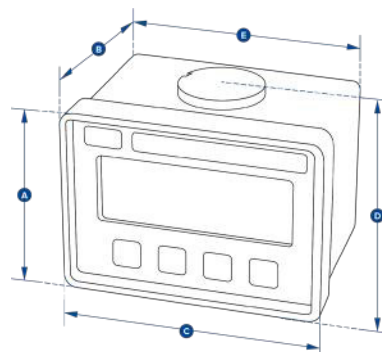
Requires connection to Crosby Straightpoint's Handheld Plus (HHP) or External Amplifier range (SA-3420) that can be configured to provide 4-20mA output for PLC or data logger integration.

| Part Numbers SP | LP500kg | LP1T | LP2.5T | LP3.5T | LP6.5T | LP15T | LP25T | LP50T | LP100T | LP250T | LP500T | LP750T | LP1000T | LP1500T |
|--------------------|---|---------|---------|---------|---------|---------|---------|---------|---------|---------|-----------|-----------|-----------|-----------|
| Crosby | 2789276 | 2789277 | 2789278 | 2789279 | 2789280 | 2789281 | 2789282 | 2789283 | 2789284 | 2789285 | 2789286 | 2789287 | 2789288 | 2789289 |
| Capacity | (te) 500 kg | 1000 kg | 2.5 | 3.5 | 6.5 | 15 | 25 | 50 | 100 | 250 | 500 | 750 | 1000 | 1500 |
| | (lb) 1,100 | 2,200 | 5,500 | 7,700 | 14,000 | 33,000 | 55,000 | 110,000 | 220,000 | 550,000 | 1,100,000 | 1,650,000 | 2,200,000 | 3,300,000 |
| Resolution | (te) 0.2 kg | 0.5 kg | 0.001 | 0.001 | 0.002 | 0.002 | 0.005 | 0.01 | 0.05 | 0.1 | 0.2 | 0.2 | 0.5 | 0.5 |
| | (lb) 0.5 | 1 | 2 | 2 | 5 | 5 | 10 | 20 | 100 | 200 | 500 | 500 | 1000 | 1000 |
| Units | (metric) kilograms, metric tons | | | | | | | | | | | | | |
| | (imperial) pounds | | | | | | | | | | | | | |
| Weight | (kg) 0.9 | 1 | 1.2 | 1.4 | 2 | 3.1 | 5.6 | 8.6 | 11.8 | 29.8 | 79.2 | 146 | 275 | 389 |
| | (lb) 0.4 | 0.5 | 0.9 | 1.3 | 2.6 | 5 | 10.3 | 18 | 24 | 64 | 172 | 319 | 603 | 854 |
| Design Factor | 3:1 | | | | | | | | | | | | | |
| Operating Temp. | -10°C to +50°C / 14°F to 122°F | | | | | | | | | | | | | |
| Accuracy | ±1% of full scale | | | | | | | | | | | | | |
| Protection | IP67 [IP68 available as an option] | | | | | | | | | | | | | |
| | NEMA6 [NEMA6P available on application] | | | | | | | | | | | | | |
| Dim. A | (mm) 24 | 35 | 45 | 50 | 63 | 75 | 89 | 102 | 110 | 130 | 225 | 295 | 360 | 430 |
| | (in) 0.94 | 1.38 | 1.77 | 1.97 | 2.48 | 2.95 | 3.50 | 4.02 | 4.33 | 5.12 | 8.86 | 11.61 | 14.17 | 16.93 |
| Dim. B | (mm) 36 | 49 | 70 | 75 | 95 | 114 | 152 | 178 | 190 | 220 | 370 | 500 | 612 | 731 |
| | (in) 1.42 | 1.93 | 2.76 | 2.95 | 3.74 | 4.49 | 5.98 | 7.01 | 7.48 | 8.66 | 14.57 | 19.69 | 24.09 | 28.78 |
| Dim. C | (mm) 70 | 80 | 100 | 105 | 125 | 150 | 195 | 225 | 230 | 300 | 440 | 590 | 712 | 832 |
| | (in) 2.76 | 3.15 | 3.94 | 4.13 | 4.92 | 5.91 | 7.68 | 8.86 | 9.06 | 11.81 | 17.32 | 23.23 | 28.03 | 32.76 |
| Dim. ØD | (mm) 20 | 20 | 25 | 30 | 40 | 50 | 63 | 75 | 88 | 125 | 170 | 200 | 250 | 275 |
| | (in) 0.79 | 0.79 | 0.98 | 1.18 | 1.57 | 1.97 | 2.48 | 2.95 | 3.46 | 4.92 | 6.69 | 7.87 | 9.84 | 10.83 |

Loadblock Plus



- The highest standard resolution of any self-indicating compression loadcell on the market today (5000+ divisions).
- Low capacity, self-indicating compression loadcell.
- Large 25mm or 1 in LCD display.
- 100Hz peak hold.
- Compact size.
- Push button tare.
- Preset tare.
- Peak hold.
- RS485 port for connection to data-logging system allowing remote viewing.
- Audible set-point alarm and an overload counter.
- Selectable units te, lbs, kN, kg.



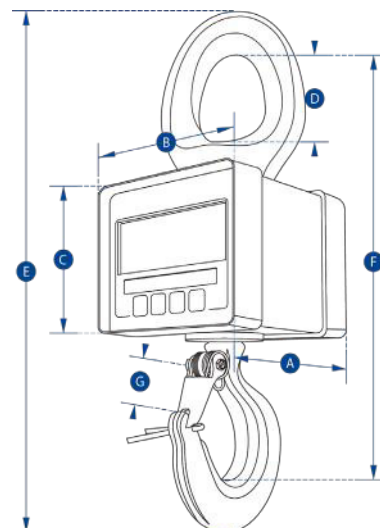
| Part Numbers SP | | LBP250KG | LBP500KG | LBP1T | LBP2T | LBP5T |
|--------------------|------------|--|----------|---------|--------------------------------|---------|
| Crosby | | 2789035 | 2789037 | 2789034 | 2789036 | 2789038 |
| Capacity | (te) | 250 kg | 500 kg | 1 | 2 | 5 |
| | (lb) | 550 | 1100 | 2200 | 4400 | 11000 |
| Resolution | (te) | 0.1 kg | 0.2 kg | 0.0005 | 0.001 | 0.001 |
| | (lb) | 0.2 | 0.5 | 1 | 2 | 2 |
| Units | (metric) | metric tons, kilograms, kilonewtons and pounds | | | | |
| | (imperial) | pounds, metric tons, kilonewtons and kilograms | | | | |
| Weight | (kg) | 0.9 | 0.9 | 0.9 | 1.5 | 3.1 |
| | (lb) | 2 | 2 | 2 | 3.3 | 6.8 |
| Design Factor | | 4:1 | 5:1 | 5:1 | 5:1 | 5:1 |
| Battery Type | | 9v PP3 | | | | |
| Battery Life | | 80 hours continuous | | | | |
| Display Type | | 6 digit 25mm LCD or 6 digit 1" LCD | | | | |
| Operating Temp. | | -10°C to 50°C / 14°F to 122°F | | | | |
| Accuracy | | ±0.1% of full scale | | | | |
| Protection | | IP65 / NEMA4X | | | | |
| Dimension A (mm) | | 81 | 81 | 81 | 92 | 92 |
| | (in) | 3.19 | 3.19 | 3.19 | 3.62 | 3.62 |
| Dimension B (mm) | | 81 | 81 | 81 | 117 | 136 |
| | (in) | 3.19 | 3.19 | 3.19 | 4.61 | 5.35 |
| Dimension C (mm) | | 113 | 113 | 113 | 112 | 112 |
| | (in) | 4.45 | 4.45 | 4.45 | 4.41 | 4.41 |
| Dimension D (mm) | | 90 | 90 | 90 | 104 | 115 |
| | (in) | 3.54 | 3.54 | 3.54 | 4.09 | 4.53 |
| Dimension E (mm) | | 104 | 104 | 104 | Not available in this capacity | |
| | (in) | 4.09 | 4.09 | 4.09 | | |

Miniweigher Plus



- Compact size and lightweight.
- Capacities from 100kg to 5t.
- Large 25mm or 1 in LCD display.
- High accuracy.
- Selectable Units te, lbs, kN, kg.
- Highest resolution of any compact digital crane scale on the market.
- Peak hold.
- Preset tare.
- Overload counter.
- 90dB audible set point alarm.
- RS-485 serial output.
- Corrosion-resistant finish.

Optional connection to Crosby SP's Handheld Plus – Crosby SP Part Nos. HHP 2789030



| Part Numbers SP | MWP100KG | MWP250KG | MWP500KG | MWP1T | MWP2T | MWP5T |
|------------------|--|----------|----------|---------|---------|---------|
| Crosby | 2789055 | 2789057 | 2789059 | 2789056 | 2789058 | 2789060 |
| Capacity (kg) | 100 | 250 | 500 | 1000 | 2 t | 5 t |
| (lb) | 220 | 550 | 1100 | 2200 | 4400 | 11000 |
| Resolution (kg) | 0.05 | 0.1 | 0.2 | 0.5 | 0.001 t | 0.001 t |
| (lb) | 0.1 | 0.2 | 0.5 | 1 | 2 | 2 |
| Units (metric) | metric tons, kilograms, kilonewtons and pounds | | | | | |
| Weight (kg) | 1.5 | 1.5 | 1.5 | 1.5 | 3.1 | 8.7 |
| (lb) | 3.3 | 3.3 | 3.3 | 3.3 | 6.8 | 19.2 |
| Design Factor | 10:1 | 5:1 | 5:1 | 5:1 | 5:1 | 5:1 |
| Battery Type | 9v PP3 | | | | | |
| Battery Life | 80 hours continuous | | | | | |
| Display Type | 6 digit 25mm LCD or 6 digit 1in LCD | | | | | |
| Operating Temp. | -10°C to +50°C / 14°F to 122°F | | | | | |
| Accuracy | ±0.1% of full scale | | | | | |
| Protection | IP65 / NEMA4X | | | | | |
| Dimension A (mm) | 81 | 81 | 81 | 81 | 117 | 136 |
| (in) | 3.19 | 3.19 | 3.19 | 3.19 | 4.61 | 5.35 |
| Dimension B (mm) | 112 | 112 | 112 | 112 | 112 | 112 |
| (in) | 4.41 | 4.41 | 4.41 | 4.41 | 4.41 | 4.41 |
| Dimension C (mm) | 81 | 81 | 81 | 81 | 92 | 92 |
| (in) | 3.19 | 3.19 | 3.19 | 3.19 | 3.62 | 3.62 |
| Dimension D (mm) | 33 | 33 | 33 | 33 | 43 | 62 |
| (in) | 1.30 | 1.30 | 1.30 | 1.30 | 1.69 | 2.44 |
| Dimension E (mm) | 222 | 222 | 222 | 222 | 283 | 349 |
| (in) | 8.74 | 8.74 | 8.74 | 8.74 | 11.14 | 13.74 |
| Dimension F (mm) | 183 | 183 | 183 | 183 | 238 | 286 |
| (in) | 7.20 | 7.20 | 7.20 | 7.20 | 9.37 | 11.26 |
| Dimension G (mm) | 22 | 22 | 22 | 22 | 28 | 42 |
| (in) | 0.87 | 0.87 | 0.87 | 0.87 | 1.10 | 1.65 |



Crosby | **BLOKCAM**

BLOKCAM

Improving safety, communication & productivity

WHAT IS BLOKCAM?

BlokCam is a wireless system that can be quickly and easily deployed to the hook block or boom tip of a crane.

The sound and view from below the camera is then transmitted and received wirelessly via the antenna systems to a screen in the cab. This allows the operator to see and hear the load and surroundings, giving an unobstructed, live, audio-visual feed of the critical areas that working in the blind would never allow.



HOW BLOKCAM WORKS

1. On the hook block and/or boom tip

The sensor captures the audio-visual feed and sends it to the transmitter. The signal is then transmitted to a repeater on the jib, boom or cab.

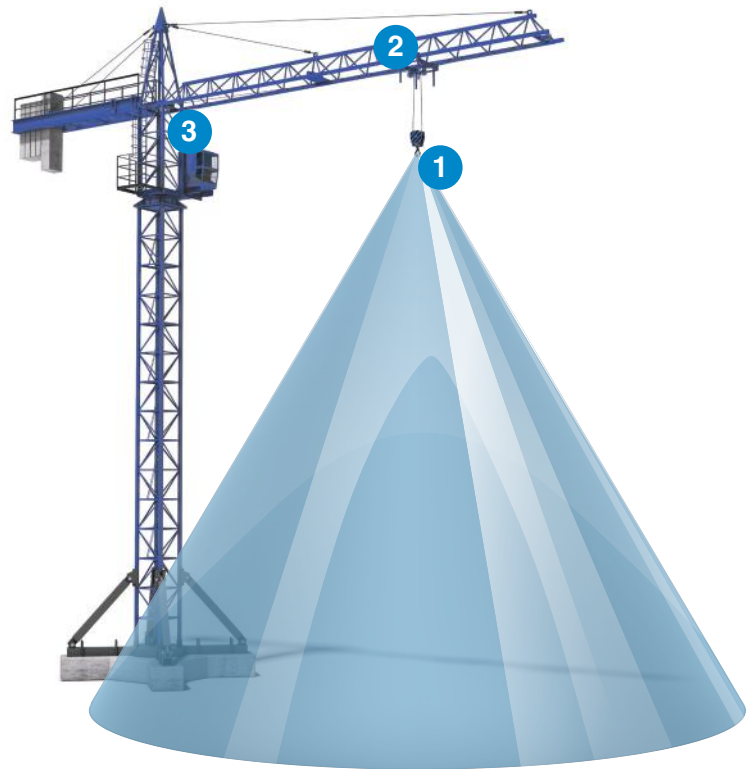
The battery powers both the transmitter and the sensor. Each component attaches magnetically and can be mounted on the block, including between the cheek plates and on the boom tip.

2. Repeater on the jib/boom and/or cab

The repeater receives the wireless signal from the transmitter and is relayed back to a monitor in the cab. The repeater position and configuration is dependent on the type of crane, type of jib/boom and length of jib/boom.

3. In the operator's cab

The live audio-visual feed is then processed and displayed on the screen positioned inside the cab, allowing the operator to see and hear live footage of everything below the camera.



TESTIMONIALS

"Baker I DC and our crane operators have been using BlokCam cameras for more than 3 years. Our crane operators now are requesting BlokCams on cranes whenever their new projects start-up. On our Wharf project in Washington DC we had 5 tower cranes, each equipped with a BlokCam and Office Link. While the cameras allow our operators to safely and confidently make picks when in the blind, the Office Link and its ability to record the camera footage has proven to be invaluable at improving job-site efficiency and providing historical information for safety training and job-site documentation."



Jason Rhine
Project Executive
Baker I DC

"HTC started working with Crosby BlokCam in 2015 - on first impressions we were very impressed by the level of expertise and professionalism of this company. We are proud to work in partnership with Crosby BlokCam and are delighted with the service which we are able to provide to our customers. It is great to work with such a forward-thinking and proactive company. Crosby BlokCam's experience and knowledge of the crane industry has allowed them to develop and offer the highest quality system on the market. Therefore, we are looking forward to many more years of working together."



Elliott Simpson
Accessories Manager
WOLFF Onsite

"BlokCam is one of the best investments London Tower Cranes has made. The quality, ability, and value of their camera system is second to none. We have found the BlokCam to be an invaluable asset for the crane operators, lifting teams and business as a whole."



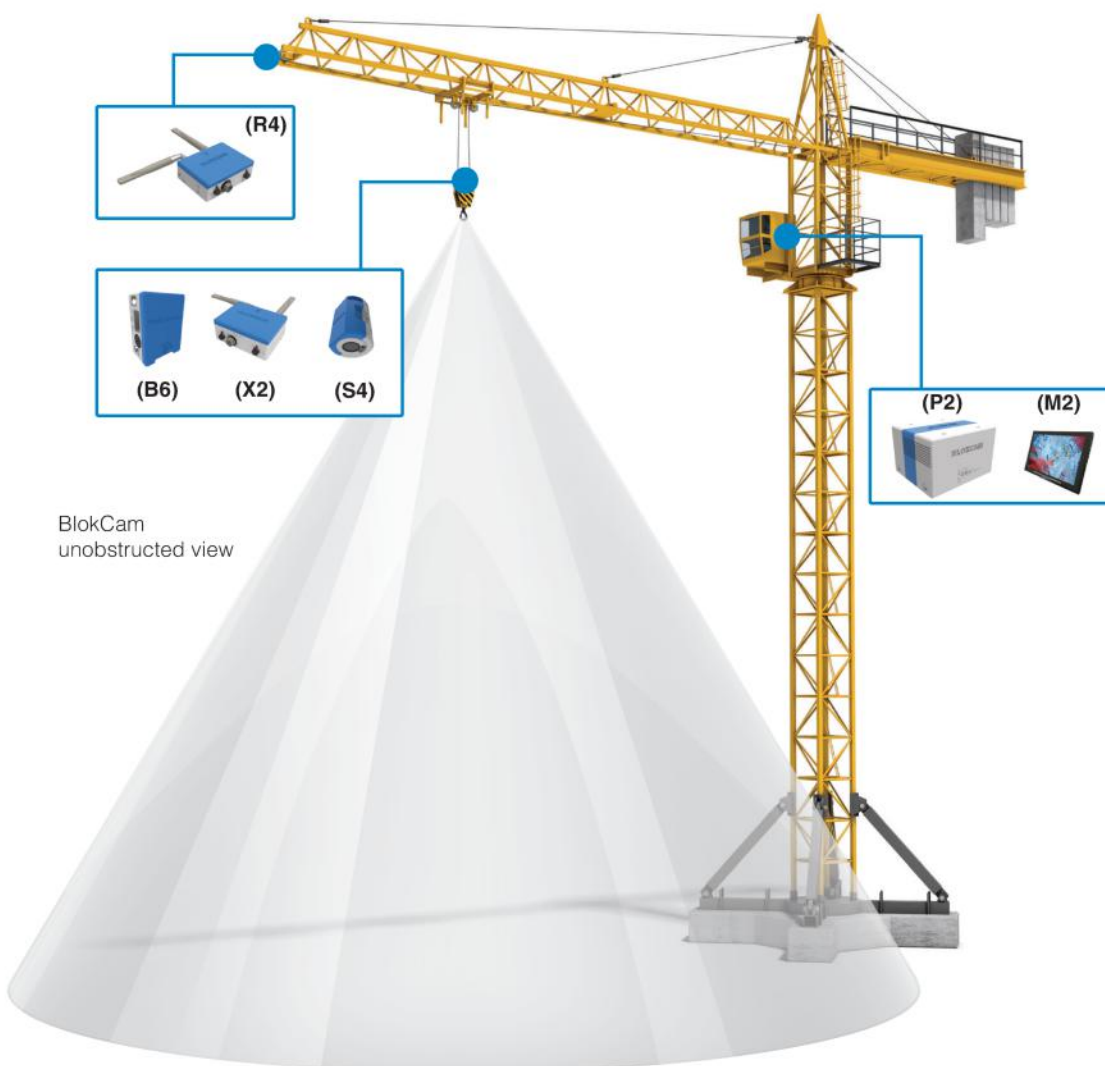
Martin Harvey
Managing Director
London Tower Cranes

X2 CAMERA SYSTEM (PART NO. 7380003)

TOWER CRANES

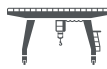
Design Overview

- Easy and quick to install; can be fitted within an hour
- Uses high powered neodymium magnets
- The lens is auto-focus and always gives clear views of the load and surrounding area below the hook
- HD 1080p resolution
- Audio from sensor to cab
- Optional single and split screen mode with additional cameras
- Long range transmission⁵
- Record on loop for up to 30 days
- Purpose built aluminum housing
- Multiple built in lanyard anchors
- Safety lanyard provides secondary security tethering
- Hands-free operation
- Multi positional sensor for variable views
- LED indicators
- Two batteries per system
- Non hazardous battery
- 12 hour battery life³
- Multi-voltage AC and DC inputs
- Durable all-weather design, manufactured to IP67⁴ rating
- -4°F to 131°F (-20°C to 55°C) operating temperature
- Optional mobile app and 4G live streaming²
- CE and FCC approved
- High quality industrial connectors
- Color coded connectors



More information, hook mounted safety system and accessories available online at thecrosbygroup.com/blokcam.

Modular design, compatible across a wide variety of cranes ¹



WHAT'S INCLUDED

Sensor (S4)

Part No. 7370021

The S4 is a 113° wide angle lens. The low profile design, tool free operation and rotatable lens allows for easy installation on any side of the hook block including in between the cheek plates.



Transmitter (X2)

Part No. 7370027

X2 dramatically improves the most important aspects of the BlokCam. The combination of performance, specification, aesthetics and 2.8 in low profile design make this a must for all crane operations.



Battery (B6)

Part No. 7370032

B5 is a non hazardous 14.54v battery pack. The clever tool-free design and easy grip finger slots makes it easy to install, remove and charge.



Charging Station (CS1)

Part No. 7370012

Our Charging Station is designed to improve the efficiency of your BlokCam batteries and the performance of the camera system.



Repeater (R4)

Part No. 7370018

Depending on the crane type and required installation, the Repeater is mounted on the jib, boom tip, or cab. The Repeater has been specifically designed for fast, wireless, telescopic deployment.



Monitor (M2)

Part No. 7360023

Our HD Monitor is a 10.1in 16:9 LCD monitor with built in speakers and a HDMI input. It has a 1280 x 800 pixel panel with automatic brightness control.



Processor (P2)

Part No. 7370017

Our purpose built Processor can project multiple high definition images and audio through a single HDMI lead with less than 0.2 seconds of latency. The design of the Processor accommodates multi-voltage AC and DC inputs making your BlokCam system compatible across all types of cranes. The Processor also provides power to the monitor, eliminating the need for a secondary socket or power supply.

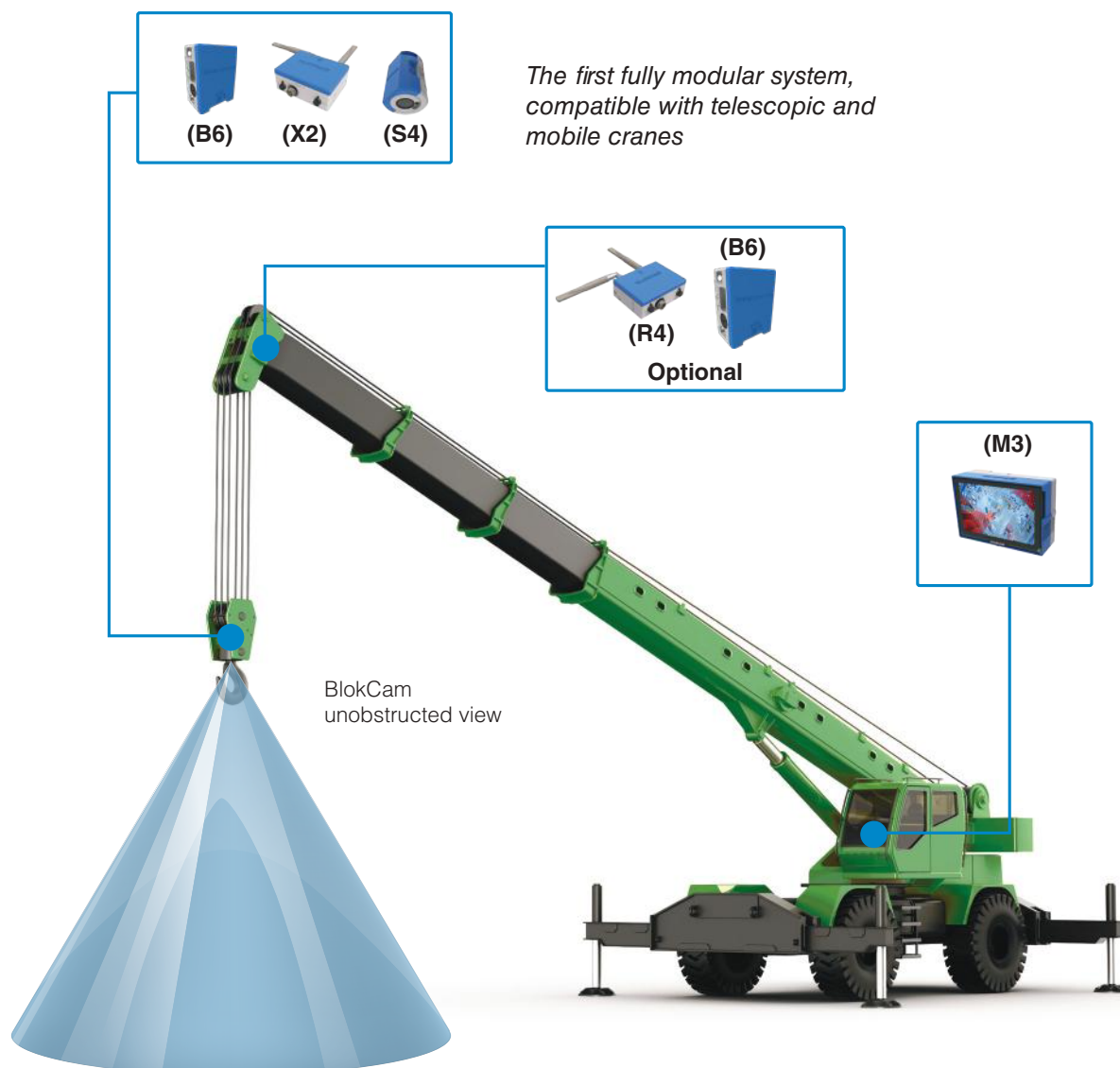


M3 CAMERA SYSTEM (PART NO. 7380001)

MOBILE & TELESCOPIC CRANES

Design Overview

- Specifically designed for the mobile and crawler market
- Can be installed and removed within 5 minutes
- Uses high powered neodymium magnets
- The lens is auto-focus and always gives clear views of the load and surrounding area below the hook
- HD 1080p resolution
- Audio from sensor to cab
- Long range transmission⁵
- Record on loop for up to 30 days
- Purpose built aluminum housing
- Multiple built in lanyard anchors
- Safety lanyard provides secondary security tethering
- Hands-free operation
- Multi positional sensor for variable views
- LED indicators
- Two batteries per system
- Non hazardous battery
- 12-hr battery life³
- Multi-voltage AC and DC inputs
- Durable all-weather design, manufactured to IP67⁴ rating
- -4°F to 131°F (-20°C to 55°C) operating temperature
- Optional mobile app and 4G live streaming²
- CE and FCC approved
- High quality industrial connectors
- Color coded connectors



Modular design, compatible across a wide variety of cranes ¹



2

WHAT'S INCLUDED

Monitor (M3)

Part No. 7370014

The M3 is an all in one display that combines a monitor, repeater and processor in to a purpose built fast fit system. The M3 has a HD display with built in speakers, automatic brightness control, less than 0.2 seconds of latency and multi-voltage AC and DC inputs.



Sensor (S4)

Part No. 7370021

The S4 is a 113° wide angle lens. The low profile design, tool free operation and rotatable lens allows for easy installation on any side of the hook block including in between the cheek plates.



Transmitter (X2)

Part No. 7370027

X2 dramatically improves the most important aspects of the BlokCam. The combination of performance, specification, aesthetics and 71mm low profile design make this a must for all crane operations.



Battery (B6)

Part No. 7370032

B5 is a non hazardous 14.54v battery pack. The clever tool-free design and easy grip finger slots makes it easy to install, remove and charge.



Charging Station (CS1)

Part No. 7370012

Our Charging Station is design to improve the efficiency of your BlokCam batteries and the performance of the camera system.



More information, hook mounted safety system and accessories available online at thecrosbygroup.com/blokcam.

BLOKCAM ACCESSORIES



BlokCam Office Link (OL1)

Part No. 7370015

BlokCam Office Link allows the data from your BlokCam to be captured in a site office for site and crane monitoring and surveillance. Your host computer could monitor and download data from multiple systems.



4G Router (30184)

Part No. 7350026

With a 4G router connected to your BlokCam system you can live stream crane footage and extract recordings from anywhere in the world ².



V-Cam (VC4)

Part No. 7370025

The Versatile-Cam is our hardwired option, which gives you the ability to expand your BlokCam system to include additional sensors. The build quality of the VC4, coupled with its non-intrusive size and mounting versatility, means it can be deployed in seconds and used in a multitude of scenarios. Ideal for visual monitoring and data logging of the hoist drum, luffing drum, slew ring, tail swing, and the operator's cab.



V-Cam (VC4a)

Part No. 7370026

The VC4a is our hardwired camera with a built in microphone, which is most commonly used for audio-visual monitoring and data logging of the operator's cab.

More information, hook mounted safety system, and accessories available online at thecrosbygroup.com/blokcam.

REFERENCES

1. Subject to crane make/model
2. Subject to availability of a suitable mobile network (data charges apply)
3. Battery life varies by use and configuration
4. IP67 rating excludes IP65 audio sensor and sounder
5. Transmission distance may vary depending on the environment

*Actual product may differ from rendered image

Safer lifts with block camera & alert systems



Crosby | BLOKCAM



ON-DEMAND WEBINAR

Get an in-depth look at the latest Crosby BlokCam audio-visual technologies designed to improve safety and efficiency through enhanced crane operation awareness and communication.

Watch now at thecrosbygroup.com/blokcam-webinar



BLOKALERT

Improving safety, communication & productivity

WHAT IS BLOKALERT?

BlokAlert is a wireless, audio-visual warning system that can be quickly and easily deployed to the hook block of a crane.

When activated by the lifting crew, the BlokAlert receiver gives out a recognizable audio-visual signal that can be seen and heard by site personnel in proximity to the hook block or load.

This forewarns the workforce to the position and movements of the hook block, increases awareness and reduces the risk of being struck by the crane's hook block, lifting accessories or load.



WHY BLOKALERT?



Traditionally, the distance between the horn, often located near the operator's cab, and the load is inconsistent and does not efficiently warn site personnel to the position of the hook block or load.

The same can be said for air horns or whistles when used by riggers. In both scenarios, the attention of the work force is diverted to where the sound is coming from, as opposed to the hazard.

Solution: Fit a warning system to the hook block. When activated, the consistent proximity between the hook block and the load enhances the efficiency of the warning system and draws attention to the hazard, not away from it.

HOW BLOKALERT WORKS

1a The lifting crew/rigger

The handheld fob is activated by the riggers or lifting crew. When operated, the signal is transmitted to the receiver on the hook block of the crane.

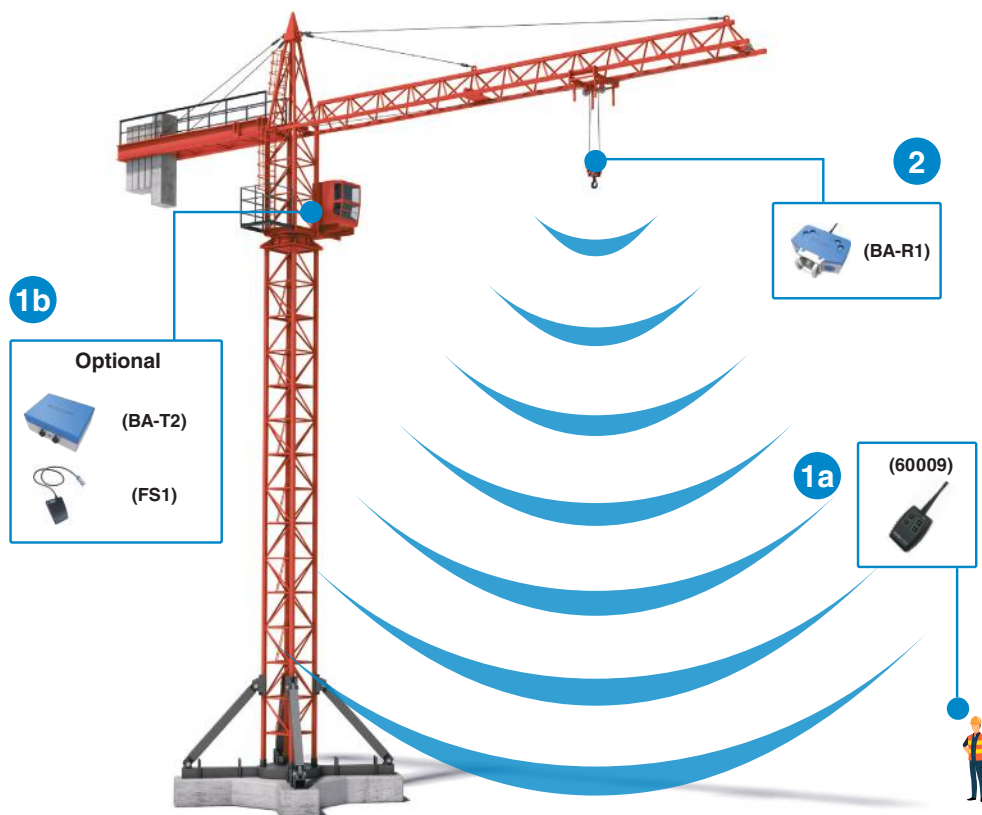
and/or

1b In the operator's cab

The transmitter is activated by a footswitch in the crane cab. When operated, the signal is transmitted to the receiver on the hook block of the crane.


2 On the hook block

On receipt of a signal from a transmitter, the Receiver is activated, alerting the workforce to the proximity of the hook block.



BLOKALERT SYSTEM (PART NO. 7380000)

Design Overview

- Uses high powered neodymium magnets
- Easy to install, remove, and charge
- Two handheld transmitters per system
- Easy to use, multifunction operation
- 2 x 78db – 107db electronic sounders
- 180° LED beacon
- Choice of four beacon colors 
- Pair transceivers with the push of a button
- Built in Lithium Ion battery with 124-hr battery life³
- Built in, fold away carry handles
- Long range transmitter and receiver⁵
- Purpose built aluminum housing
- Built in lanyard anchors
- Safety lanyard provides secondary security tethering
- LED power indicator
- 3.39 inch low profile design
- Durable all-weather design, manufactured to IP67⁴ rating
- 14°F to 122°F (-10°C to 50°C) operating temperature
- Easy access fuse
- High quality industrial charge connector
- Optional cab transmitter
- CE and FCC approved

Modular design, compatible across a wide variety of cranes ¹



WHAT'S INCLUDED



BlokAlert Receiver (BA-R1) Part No. 7370003

Along with the LED Beacon, the BlokAlert Receiver is capable of up to 528 different audible warnings. This audio-visual warning system, combined with great functionality, performance and design makes this a must for all lifting operations.

Size & Weight (excluding Antenna)

| | |
|---------|-----------------|
| Height: | 6.82 in (173mm) |
| Width: | 8.27 in (210mm) |
| Depth: | 3.39 in (86mm) |
| Weight: | 7.5 lb (3,400g) |



BlokAlert Fob – 4-Button (60009) Part No. 7360009

The BlokAlert Fob allows the riggers to operate multiple BlokAlert systems across your site.

- Two four-button fobs per system
- Rugged design complete with neck lanyard
- Eight- and 16-button fobs available on request

BLOKALERT ACCESSORIES



BlokAlert Transmitter (BA-T2) Part No. 7370030

Through the use of a footswitch, the BlokAlert Transmitter gives the crane operator hand-free operation of the BlokAlert system.



BlokAlert Footswitch (FS1) Part No. 7360017

The Footswitch provides the hands-free operation of the BlokAlert Transmitter. It is quick and easy to install.

More information, hook mounted safety system, and accessories available online at thecrosbygroup.com/blokcam.

SETTING THE STANDARD IN CELL TOWER SECUREMENT

The Crosby Group offers a wide range of solutions for the cell tower industry. Our products have been put through rigorous testing to ensure optimal functionality and safety ratings.

Blocks & overhaul balls
Turnbuckles
Shackles
Wire rope clips
Tensionmeters
Load monitoring technologies