



CHAIN & ACCESSORIES

With Product Warning and Application Information

GENERAL INFORMATION

WORKING LOAD LIMIT

The "Working Load Limit" is the maximum load in pounds which should ever be applied to chain, when the chain is new or in as-new condition, and when the load is uniformly applied in direct tension to a straight length of chain.

PROOF TEST

The "Proof Test" is a term designating the tensile test applied to new chain for the sole purpose of detecting injurious defects in the material or manufacture. It is the load that the chain has withstood under a test in which the load has been applied in direct tension to a straight length of chain.

MINIMUM ULTIMATE LOAD

The "Minimum Ultimate Load" is the minimum load at which new chain will break when tested by applying direct tension to a straight length of chain at a uniform rate of speed in a testing machine.

ATTACHMENTS

Any attachments, such as hooks or links, should have a rated "Working Load Limit" at least equal to the chain with which it is used.

SYMMETRICAL LOADING

Rated Working Load Limit assumes symmetrical loading of all sling legs.

SPECIFICATIONS: ASME B30.9 2006

Paragraph 9-1.6.1 "Prior to initial use, all new and repaired chain and components of an alloy steel chain sling, either individually or as an assembly, shall be proof tested by the sling manufacturer or qualified person.



CAUTION

Only Crosby Alloy chain, Spectrum 8® or Spectrum 10®, should be used for overhead lifting applications.

General Usage – It must be recognized that certain factors in the usage of chain and attachments can be abusive and lessen the load that the chain or attachments can withstand. Some examples are twisting of the chain; disfigurement; deterioration by straining, usage, weathering and corrosion; rapid application of load or jerking; applying excessive loads; sharp corner cutting action and non-symmetrical loading effects.

When using chain slings in choker applications, the Working Load Limit must be reduced by 20%. Crosby recommends a minimum angle of choke of 120 degrees. Consult Crosby when planning to use an angle of choke of less than 120 degrees. If Crosby A-1338 cradle grab hooks are used at a minimum angle of choke of 120 degrees, the full sling rated WLL can be utilized.



In shortening applications, a 20% reduction of the Working Load Limit is required except when using the Crosby A-1338 Cradle Grab Hooks, S-1311 Chain Shortener Link, the A-1355 Chain Choker Hook in conjunction with the S-1325 Chain Coupler Link, or the Crosby ELIMINATOR® shortener link. They can be used without any reduction to the Working Load Limit.

Care should be taken to observe these derated applications or chain may fracture or permanently stretch at loads less than the advertised chain ultimate strength and proof load respectively.

Environmental Effects – Excessive high or low temperatures, or exposure to chemically active environments such as acids or corrosive liquids or fumes, can reduce the performance of the chain.

Temperature

- Extreme temperatures will reduce the performance of alloy steel chain slings.
- Normal operating temperature is -40° F to 400° F (-40° C to 204° C).

- See the temperature exposure chart (Table 1) to determine reduction of WLL due to operation at, and exposure to, elevated temperatures.

Chemically Active Environments can have detrimental effects on the performance of chain. The effects can be both visible loss of material and undetectable material degradation causing significant loss of strength.

- Usage Exposure – Exposure to chemically active environments such as acids or corrosive liquids or fumes can reduce the performance of the chain.
- Special Surface Coating/Plating/Galvanizing – Chain should not be subjected to galvanizing, or any plating process.
- If it is suspected that the chain has been exposed to chemically active environment, remove from service.

Temperature of Chain		Grade 8 (80) Chain		Grade 10 (100) Chain	
(F°)	(C°)	Temporary Reduction of Rated Load at Elevated Temperature*	Permanent Reduction of Rated Load After Exposure to Temperature**	Temporary Reduction of Rated Load at Elevated Temperature*	Permanent Reduction of Rated Load After Exposure to Temperature**
Below 400	Below 204	None	None	None	None
400	204	10%	None	15%	None
500	260	15%	None	25%	5%
600	316	20%	5%	30%	15%
700	371	30%	10%	40%	20%
800	427	40%	15%	50%	25%
900	482	50%	20%	60%	30%
1000	538	60%	25%	70%	35%
Over 1000	Over 538	OSHA 1910.184 and ASME B30.9 requires all slings exposed to temperatures over 1000° F to be removed from service.			

* Crosby does not recommend the use of Alloy Chain at temperatures above 800° F.

** When chain is used at room temperature after being heated to temperatures shown in the first column

Crosby® Grade 100 Chain Sling Configurations

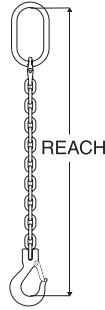
TO MAKE YOUR CROSBY® GRADE 100 ALLOY CHAIN SLING

Follow these simple steps in making a sling assembly:

1. Determine the maximum load to be lifted by the sling assembly.
2. Choose the type of sling assembly suited for the shape of the load and the size of the sling assembly for the load to be lifted. The decision must take into account the angle of the sling legs in multileg slings.
3. Determine the overall reach from bearing point of master link to bearing point on hook (see Fig. 1).
4. Select components, assemble chain and components.
5. Affix sling identification tag to sling. The tag is available from your Authorized Crosby Distributor.

Each sling shall be marked to show: name or trademark of manufacturer, grade, nominal chain size, number of legs, rated load for the type(s) of hitch(es) used and angle upon which it is based (reach).

If measurement comes in the link, cut the following link. For two leg type slings, count the links and use an even number for clevis



hooks and an odd number for eye hooks. This will position hooks in the same plane. In multileg slings always use the same number of links in each leg.

When using chain slings in choker applications, the Working Load Limit must be reduced by 20%. Crosby recommends a minimum angle of choke of 120 degrees. Consult Crosby when planning to use an angle of choke of less than 120 degrees. If Crosby A-1338 cradle grab hooks are used at a minimum angle of choke of 120 degrees, the full sling rated WLL can be utilized.



In shortening applications, a 20% reduction of the Working Load Limit is required except when using the Crosby A-1338 Cradle Grab Hooks, S-1311 Chain Shortener Link, the A-1355 Chain Choker Hook in conjunction with the S-1325 Chain Coupler Link, or the Crosby ELIMINATOR® shortener link. They can be used without any reduction to the Working Load Limit.

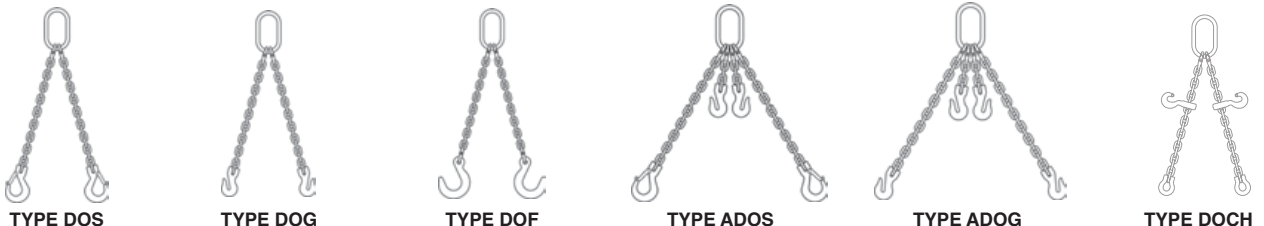


The Slings shown here are standard assemblies that can be made from "Proof Tested" Crosby Components and Alloy Chain supplied by your authorized Crosby distributor. Assemblies must include chain sling identification tag (not shown, see page 238).



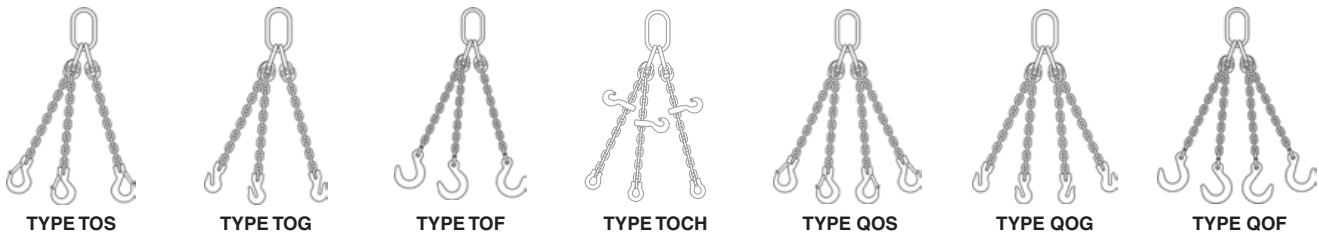
TYPE CO TYPE SOS TYPE SOG TYPE SOF TYPE SSS TYPE SGS TYPE ASOS TYPE ASOF TYPE ASOG TYPE SOCH

Type	Description	Type	Description
CO	Single Chain Sling with Master Link each end	SGS	Single Chain Sling with Grab Hook and Sling Hook
SOS	Single Chain Sling with Master Link and Sling Hook	ASOS	Adjustable Single Chain with Master Link and Sling Hook
SOG	Single Chain Sling with Master Link and Grab Hook	ASOF	Adjustable Single Chain Sling with Master Link and Foundry Hook
SOF	Single Chain Sling with Master Link and Foundry Hook	ASOG	Adjustable Single Chain Sling with Master Link and Grab Hook
SSS	Single Chain Sling with Sling Hook each end	SOCH	Single with 1335 Choker



TYPE DOS TYPE DOG TYPE DOF TYPE ADOS TYPE ADOG TYPE DOCH

Type	Description	Type	Description
DOS	Double Chain Sling with Master Link and Sling Hook	ADOS	Adjustable Double Chain Sling with Master Link and Sling Hook
DOG	Double Chain Sling with Master Link and Grab Hook	ADOG	Adjustable Double Chain Sling with Master Link and Grab Hook
DOF	Double Chain Sling with Master Link and Foundry Hook	DOCH	Double with 1335 Choker



TYPE TOS TYPE TOG TYPE TOF TYPE TOCH TYPE QOS TYPE QOG TYPE QOF

Type	Description	Type	Description
TOS	Triple Chain Sling with Master Link and Sling Hook	QOS	Quadruple Chain Sling with Master Link and Sling Hook
TOG	Triple Chain Sling with Master Link and Grab Hook	QOG	Quadruple Chain Sling with Master Link and Grab Hook
TOF	Triple Chain Sling with Master Link and Foundry Hook	QOF	Quadruple Chain Sling with Master Link and Foundry Hook
TOCH	Triple with 1335 Choker		

TO ORDER YOUR CROSBY ELIMINATOR® GRADE 100 ALLOY CHAIN SLING

Follow these simple steps to order a sling assembly:

1. Determine the maximum load to be lifted by the sling assembly.
2. Choose the type of sling assembly suited for the shape of the load and the size of the sling assembly for the load to be lifted. The decision must take into account the angle of the sling legs in multileg slings.
3. Determine the overall reach from bearing point of Eliminator Bail to bearing point on hook (see Fig. 1).
4. Select components, assemble chain and components.
5. Affix sling identification tag to sling. The tag is available from your Authorized Crosby Distributor.



Fig. 1

When using chain slings in choker applications, the Working Load Limit must be reduced by 20%. Crosby recommends a minimum angle of choke of 120 degrees.

Consult Crosby when planning to use an angle of choke of less than 120 degrees. If Crosby A-1338 cradle grab hooks are used at a minimum angle of choke of 120 degrees, the full sling rated WLL can be utilized.



In shortening applications, a 20% reduction of the Working Load Limit is required except when using the Crosby A-1338 Cradle Grab Hooks, S-1311 Chain Shortener Link, the A-1355 Chain Choker Hook in conjunction with the S-1325 Chain Coupler Link, or the Crosby ELIMINATOR® shortener link. They can be used without any reduction to the Working Load Limit.

Each sling shall be marked to show: name or trademark of manufacturer, grade, nominal chain size, number of legs, rated load for the type(s) of hitch(es) used and angle upon which it is based (reach).



TYPE ESO



TYPE ESOS



TYPE ESOG



TYPE ESOL



TYPE ESOF

Type	Description	Type	Description
ESOS	Crosby ELIMINATOR® Single Chain Sling with Sling Hook	ESOL	Crosby ELIMINATOR® Single Chain with SHUR-LOC® Hook
ESOG	Crosby ELIMINATOR® Single Chain Sling with Grab Hook	ESOF	Crosby ELIMINATOR® Single Chain with Foundry Hook



TYPE EDO



TYPE EDOS



TYPE EDOG



TYPE EDOL



TYPE EDOF

Type	Description	Type	Description
EDOS	Crosby ELIMINATOR® Double Chain Sling with Sling Hooks	EDOL	Crosby ELIMINATOR® Double Chain with SHUR-LOC® Hooks
EDOG	Crosby ELIMINATOR® Double Chain Sling with Grab Hooks	EDOF	Crosby ELIMINATOR® Double Chain with Foundry Hooks



TYPE ETOS



TYPE ETOG



TYPE ETOL



TYPE ETOF



TYPE EQOS



TYPE EQOG



TYPE EQOL



TYPE EQOF

Type	Description	Type	Description
ETOS	Crosby ELIMINATOR® Triple Chain Sling with Master Link and Sling Hooks	EQOS	Crosby ELIMINATOR® Quad Chain Sling with Master Link and Sling Hooks
ETOG	Crosby ELIMINATOR® Triple Chain Sling with Master Link and Grab Hooks	EQOG	Crosby ELIMINATOR® Quad Chain Sling with Master Link and Grab Hooks
ETOL	Crosby ELIMINATOR® Triple Chain Sling with Master Link and SHUR-LOC® Hooks	EQOL	Crosby ELIMINATOR® Quad Chain Sling with Master Link and SHUR-LOC® Hooks
ETOF	Crosby ELIMINATOR® Triple Chain Sling with Master Link and Foundry Hooks	EQOF	Crosby ELIMINATOR® Quad Chain Sling with Master Link and Foundry Hooks



Grade 100 Assembly Chart

SINGLE LEG SLING

Spectrum 10 [®] Chain Size													
(in)	(mm)	Grade 100 Chain Stock No.	Master Link A-1342N Stock No.	Master Link Assembly A-1345N Stock No.	Master Link A-342 Stock No.	Master Link A-345 Stock No.	ELIMINATOR L-1361 Stock No.	LOK-A-LOY [®] A-1337 Stock No.	Chain Coupler S-1325A Stock No.	Chain Shortener Link S-1311N Stock No.	SHUR-LOC [®] Clevis Hook S-1317 Stock No.	SHUR-LOC [®] Eye Hook S-1316 Stock No.	SHUR-LOC [®] Swivel Hook S-1326 Stock No.
1/4 (9/32)	7	273710	1011403X1	—	1014266	—	1049802	1015104	1098500	1017869	1029000	1022914	1004313
5/16	8	273729	1011412X2	—	1014266 1014280 1014285	—	1049809	1015113	1098504	1017878	1029009	1022914	1004313
3/8	10	273738	1011421X3	—	1014285 1014319	—	1049818	1015122	1098508	1017897	1029018	1002923	1004323
1/2	13	273747	1011430X4	—	1014319 1014331	—	1049827	1015136	1098512	1017906	1029027	1002932	1004331
5/8	16	273756	1011449X5	—	1014331 1014348	—	1049836	1015145	1098516	1017915	1029036	1002941	1004340
3/4	20	273858	1011458X6	—	1014348 1014365	—	—	1015154	—	—	1021071	1022942	1004349
7/8	22-23	273867	1011467X7	—	1014365 1014388	—	—	1015163	—	—	1029080	1022943	1004358
1	26	273876	—	—	1014388 1014404	—	—	1015172	—	—	1029089	1022944	—
1-1/4	32	—	—	—	1014404 1014422	—	—	1015181	—	—	—	—	—

DOUBLE LEG SLING

Spectrum 10 [®] Chain Size		Grade 100 Chain Stock No.	Master Link A-1342N Stock No.	Master Link Assembly A-1345N Stock No.	Master Link A-342 Stock No.	Master Link A-345 Stock No.	ELIMINATOR L-1362 Stock No.	LOK-A-LOY [®] A-1337 Stock No.	Chain Coupler S-1325A Stock No.	Chain Shortener Link S-1311N Stock No.	SHUR-LOC [®] Clevis Hook S-1317 Stock No.	SHUR-LOC [®] Eye Hook S-1316 Stock No.	SHUR-LOC [®] Swivel Hook S-1326 Stock No.
(in)	(mm)												
1/4 (9/32)	7	273710	1011403X1	—	1014266	—	1049913	1015104	1098500	1017869	1029000	1022914	1004313
5/16	8	273729	1011412X2	—	1014285	—	1049922	1015113	1098504	1017878	1029009	1022914	1004313
3/8	10	273738	1011421X3	—	1014319	—	1049931	1015122	1098508	1017897	1029018	1002923	1004323
1/2	13	273747	1011430X4	—	1014331	—	1049940	1015136	1098512	1017906	1029027	1002932	1004331
5/8	16	273756	1011449X5	—	1014348	—	1049949	1015145	1098516	1017915	1029036	1002941	1004340
3/4	20	273858	1011458X6	—	1014365	—	—	1015154	—	—	1021071	1022942	1004349
7/8	22-23	273867	1011467X7	—	1014388	—	—	1015163	—	—	1029080	1022943	1004358
1	26	273876	—	—	1014404	—	—	1015172	—	—	1029089	1022944	—
1-1/4	32	—	—	—	1014468	—	—	1015181	—	—	—	—	—

TRIPLE AND QUAD LEG SLINGS

Spectrum 10 [®] Chain Size		Grade 100 Chain Stock No.	Master Link A-1342N Stock No.	Master Link Assembly A-1345N Stock No.	Master Link A-342 Stock No.	Master Link A-345 Stock No.	ELIMINATOR Stock No.	LOK-A-LOY [®] A-1337 Stock No.	Chain Coupler S-1325A Stock No.	Chain Shortener Link S-1311N Stock No.	SHUR-LOC [®] Clevis Hook S-1317 Stock No.	SHUR-LOC [®] Eye Hook S-1316 Stock No.	SHUR-LOC [®] Swivel Hook S-1326 Stock No.
(in)	(mm)												
1/4 (9/32)	7	273710	—	1011510	—	1014739	See Page 225	1015104	1098500	1017869	1029000	1022914	1004313
5/16	8	273729	—	1011510	—	1014742		1015113	1098504	1017878	1029009	1022914	1004313
3/8	10	273738	—	1011529	—	1014766		1015122	1098508	1017897	1029018	1002923	1004323
1/2	13	273747	—	1011538	—	1014779		1015136	1098512	1017906	1029027	1002932	1004331
5/8	16	273756	—	1011547	—	1014807		1015145	1098516	1017915	1029036	1002941	1004340
3/4	20	273858	—	1011556	—	1014810		1015154	—	—	1021071	1022942	1004349
7/8	22-23	273867	—	1011565	—	1014845		1015163	—	—	1029080	1022943	1004358
1	26	273876	—	—	—	1014845		1015172	—	—	1029089	1022944	—
1-1/4	32	—	—	—	—	1014986		1015181	—	—	—	—	—

SINGLE LEG SLING

Spectrum 10 [®] Chain Size										
(in)	(mm)	SHUR-LOC [®] Swivel Hook w/ Bearing S-13326 Stock No.	Clevis Sling Hook L-1339 Stock No.	Eye Sling Hook L-1327 Stock No.	Cradle Grab Hook A-1338* Stock No.	Clevis Grab Hook A-1358* Stock No.	Eye Grab Hook A-1328 Stock No.	Clevis Foundry Hook A-1359 Stock No.	Eye Foundry Hook A-1329 Stock No.	Chain Choker A-1355 Stock No.
1/4 (9/32)	7	1004413	1049112	1025869	1049417	1049610	1026169	1049907	1026280	1015204
5/16	8	1004413	1049121	1025869	1049426	1049629	1026169	1049911	1026280	1015204
3/8	10	1004422	1049130	1025878	1049435	1049638	1026187	1049916	1026289	1015213
1/2	13	1004431	1049149	1025887	1049444	1049647	1026196	1049925	1026297	1015222
5/8	16	1004440	1049158	1025896	1049453	1049656	1026205	1049934	1026306	1015231
3/4	20	—	1049167	1025915	—	—	1026214	1049943	1026315	—
7/8	22-23	—	1049176	1025924	—	—	1026223	1049952	1026324	—
1	26	—	—	1025933	—	—	1016232	—	1026333	—
1-1/4	32	—	—	1025942	—	—	1026241	—	1026342	—

DOUBLE LEG SLING

Spectrum 10 [®] Chain Size		SHUR-LOC [®] Swivel Hook w/ Bearing S-13326 Stock No.	Clevis Sling Hook A-1339 * Stock No.	Eye Sling Hook L-1327 Stock No.	Cradle Grab Hook A-1338* Stock No.	Clevis Grab Hook A-1358* Stock No.	Eye Grab Hook A-1328 Stock No.	Clevis Foundry Hook A-1359 Stock No.	Eye Foundry Hook A-1329 Stock No.	Chain Choker A-1355 Stock No.
(in)	(mm)									
1/4 (9/32)	7	1004413	1048991	1025869	1049417	1049610	1026169	1049907	1026280	1015204
5/16	8	1004413	1049000	1025869	1049426	1049629	1026169	1049911	1026280	1015204
3/8	10	1004422	1049009	1025878	1049435	1049638	1026187	1049916	1026289	1015213
1/2	13	1004431	1049018	1025887	1049444	1049647	1026196	1049925	1026297	1015222
5/8	16	1004440	1049027	1025896	1049453	1049656	1026205	1049934	1026306	1015231
3/4	20	—	1049036	1025915	—	—	1026214	1049943	1026315	—
7/8	22-23	—	1049045	1025924	—	—	1026223	1049952	1026324	—
1	26	—	—	1025933	—	—	1026232	—	1026333	—
1-1/4	32	—	—	1025942	—	—	1026241	—	1026342	—

Chain & Accessories

TRIPLE AND QUAD LEG SLINGS

Spectrum 10 [®] Chain Size		SHUR-LOC [®] Swivel Hook w/ Bearing S-13326 Stock No.	Clevis Sling Hook A-1339 * Stock No.	Eye Sling Hook L-1327 Stock No.	Cradle Grab Hook A-1338* Stock No.	Clevis Grab Hook A-1358* Stock No.	Eye Grab Hook A-1328 Stock No.	Clevis Foundry Hook A-1359 Stock No.	Eye Foundry Hook A-1329 Stock No.	Chain Choker A-1355 Stock No.
(in)	(mm)									
1/4 (9/32)	7	1004413	1048991	1025869	1049417	1049610	1026169	1049907	1026280	1015204
5/16	8	1004413	1049000	1025869	1049426	1049629	1026169	1049911	1026280	1015204
3/8	10	1004422	1049009	1025878	1049435	1049638	1026187	1049916	1026289	1015213
1/2	13	1004431	1049018	1025887	1049444	1049647	1026196	1049925	1026297	1015222
5/8	16	1004440	1049027	1025896	1049453	1049656	1026205	1049934	1026306	1015231
3/4	20	—	1049036	1025915	—	—	1026214	1049943	1026315	—
7/8	22-23	—	1049045	1025924	—	—	1026223	1049952	1026324	—
1	26	—	—	1025933	—	—	1026232	—	1026333	—
1-1/4	32	—	—	1025942	—	—	1026241	—	1026342	—

* Available in latch version.

WORKING LOAD LIMIT – 4 TO 1 DESIGN FACTOR

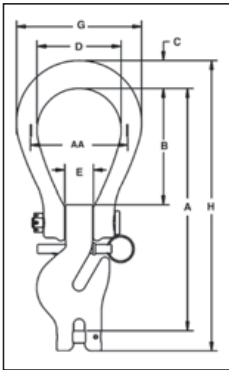
Chain Size		90°	60°	45°	30°	60°	45°	30°
(in)	(mm)	Single Leg	Double Leg			Triple and Quad Leg		
—	6	3200	5500	4500	3200	8300	6800	4800
1/4 (9/32)	7	4300	7400	6100	4300	11200	9100	6400
5/16	8	5700	9900	8100	5700	14800	12100	8500
3/8	10	8800	15200	12400	8800	22900	18700	13200
1/2	13	15000	26000	21200	15000	39000	31800	22500
5/8	16	22600	39100	32000	22600	58700	47900	33900
3/4	20	35300	61100	49900	35300	91700	74900	52950
7/8	22	42700	74000	60400	42700	110900	90600	64000
1	26	59700	103400	84400	59700	155100	126600	89550
1-1/4	32	90400	156600	127800	90400	234900	191700	135600

For choker applications, the Working Load Limit must be reduced by 20%. The Crosby A-1338 cradle grab hook and S1311N chain shorter link do not require any reduction of the Working Load Limit. The design factor of 4 to 1 on Spectrum® 10 Alloy Chain agrees with the design factor used by the International Standards Organization (I.S.O.) and ASME B30.9 and is the preferred set of Working Load Limit values to be used.

Crosby ELIMINATOR Fittings



A-1361
Single Hook

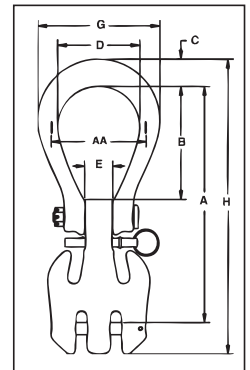


The Crosby ELIMINATOR® combines selected features and functionality of a master link, connecting link, grab hook and adjuster legs to provide you with one fitting that is suitable for applications that require an adjustable length chain sling.

- Forged Alloy Steel - Quenched and Tempered.
- Innovative two piece design allows for maximum flexibility.
- Individually Proof Tested with certification.
- The Crosby ELIMINATOR®, with properly installed and locked latch pin, can be used for personnel lifting applications and meets the intent of OSHA Rule 1926.1431(g)(1)(i) (A) and 1926.1501(g)(4)(iv)(B).
- Suitable for use with Grade 100 and Grade 80 chain.
- Engineered to accommodate optional locking pins that can be inserted to “lock” the shortened chain legs into place.
- Fatigue rated at 1-1/2 times the Working Load Limit at 20,000 cycles.
- Use the A-1361 and A-1362 in combination to make 3 leg chain slings.
- Load pin assembly instructions on page 276.
- “Look for the Platinum Color - Crosby Grade 100 Alloy Products.”
- All sizes are RFID EQUIPPED.



A-1362
Double Hook



Crosby 8/10™



Fatigue Rated®



Chain & Accessories

A-1361 Crosby ELIMINATOR® Single Hook

Chain Size		Frame Size	Working Load Limit (lb)*	A-1361 Stock No.	L-1361 Stock No.	Weight Each (lb)	Dimensions (in)								S-4104N Replacement Latch Pin Stock No.
(in)	(mm)						A	B	C	D	E	G	H	AA	
1/4	7	2	4300	1049797	1049802	3.9	8.20	3.88	.90	3.00	.94	4.40	9.78	3.50	1092983
5/16	8	2	5700	1049804	1049809	3.9	8.18	3.88	.90	3.00	.94	4.40	9.78	3.50	1092983
3/8	10	3	8800	1049813	1049818	6.5	10.05	4.81	1.16	3.50	1.13	5.20	12.06	4.00	1092992
1/2	13	4	15000	1049822	1049827	13.5	12.88	6.00	1.63	4.13	1.31	6.39	15.57	5.00	1093001
5/8	16	5	22600	1049831	1049836	24.1	15.26	6.88	1.96	4.75	1.63	7.41	18.58	6.00	1093010

* Proof tested at 2.5 times the Working Load Limit. Minimum Ultimate Load is 4 times the Working Load Limit.

A-1362 Crosby ELIMINATOR® Double Hook

Chain Size		Frame Size	Working Load Limit (lb)*	A-1362 Stock No.	L-1362 Stock No.	Weight Each (lb)	Dimensions (in)								S-4104N Replacement Latch Pin Stock No.
(in)	(mm)						A	B	C	D	E	G	H	AA	
1/4	7	2	8600	1049859	1049913	4.7	8.20	3.88	.90	3.00	.94	4.40	10.10	3.50	1092983
5/16	8	2	11400	1049868	1049922	4.7	8.18	3.88	.90	3.00	.94	4.40	10.10	3.50	1092983
3/8	10	3	17600	1049877	1049931	8.1	10.05	4.81	1.16	3.50	1.13	5.20	12.56	4.00	1092992
1/2	13	4	30000	1049886	1049940	17.3	12.88	6.00	1.63	4.13	1.31	6.39	16.25	5.00	1093001
5/8	16	5	45200	1049895	1049949	31.5	15.26	6.88	1.96	4.75	1.63	7.41	19.33	6.00	1093010

* Proof tested at 2 times the Working Load Limit. Minimum Ultimate Load is 4 times the Working Load Limit.

Using Crosby ELIMINATOR® in 3 and 4 Leg Slings

See page 222-223 for basic chain sling components.

Spectrum 10 Chain Size		Master Link A-342 Stock No.	Master Link A-1342 Stock No.	Crosby ELIMINATOR® Single A-1361 Stock No.	Crosby ELIMINATOR® Double A-1362 Stock No.
(in)	(mm)				
1/4 (9/32)	7	1014285	1011412	1049797	1049859
5/16	8	1014319	1011421	1049804	1049868
3/8	10	1014331	1011430	1049813	1049877
1/2	13	1014348	1011449	1049822	1049886
5/8	16	1014365	1011458	1049831	1049895

Use one of either A-342 or A-1342 master link.
Use one of each when making three leg sling.

Spectrum 10 Chain Size		Master Link A-342 Stock No.	Master Link A-1342 Stock No.	Crosby ELIMINATOR® Single A-1361 Stock No.	Crosby ELIMINATOR® Double A-1362 Stock No.
(in)	(mm)				
1/4 (9/32)	7	1014285	1011412	–	1049859
5/16	8	1014319	1011421	–	1049868
3/8	10	1014331	1011430	–	1049877
1/2	13	1014348	1011449	–	1049886
5/8	16	1014365	1011458	–	1049895

Use one of either A-342 or A-1342 master link.
Use two A-1362 fittings when making quad leg sling.

Grade 100 Alloy Chain



Spectrum® 10
Grade 100
Alloy Chain

- Alloy Steel.
- Heat Treated.
- 25% stronger than Grade 80 Alloy Chain.
- Permanently embossed with CG (Crosby Group) and 10 (Grade).
- Finish - Black rust preventative coating.
- Proof Tested at 2 times the Working Load Limit with certification
- Standard container - fiber drum

Grade 100 Alloy Chain Recommended for overhead lifting applications

Chain Size		Gr. 100 Drum Stock No.	Feet Per Drum	Material Size (in)	Working Load Limit (lb)*	Maximum Inside Length (in)	Maximum Inside Width (in)	Maximum Length 100 Links (in)	Weight Per 100 Feet (lb)
(in)	(mm)								
9/32 (1/4)	7	273710	500	.276	4300	.87	.42	90	75
5/16	8	273729	500	.343	5700	1.01	.49	100	113
3/8	10	273738	500	.394	8800	1.23	.58	125	148
1/2	13	273747	300	.512	15000	1.57	.77	164	249
5/8	16	273756	200	.630	22600	1.93	.90	202	378
3/4	20	273858	100	.787	35300	2.52	.98	252	590
7/8	22	273867	100	.866	42700	2.77	1.08	277	740
1	26	273876	75	1.02	59700	3.28	1.28	328	1010

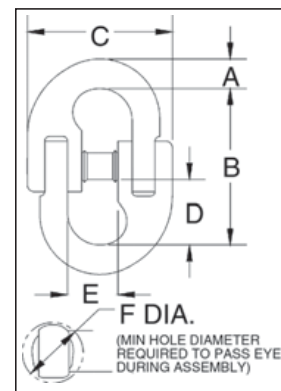
* Proof tested at 2 times Working Load Limit. Ultimate Load is 4 times the Working Load Limit.

Chain & Accessories



A-1337
10 Alloy
Connecting Link

- Suitable for use with both Grade 80 and Grade 100 chain.
- Individually Proof Tested at 2-1/2 times Working Load Limit with certification.
- Locking system that provides for simple assembly and disassembly - no special tools needed.
- 25% stronger than Grade 80.
- Meets ASTM A-952 standards for Grade 100 chain fittings.
- Forged Alloy Steel - Quenched and Tempered.
- Sizes 9/32 through 1 inch are fatigue rated.
- "Look for the Platinum Color-Crosby Grade 100 Alloy Products."



Grosby 8/10™



Fatigue Rated

LOK-A-LOY® 10 Alloy Connecting Link

Chain Size		A-1337 Stock No.	Pkg. Qty.	Weight Each (lb)	Working Load Limit (lb)*	Dimensions (in)					
(in)	(mm)					A	B	C	D	E	F
9/32 (1/4)	7	1015104	60	.26	4300	.38	1.94	1.90	.81	.69	.57
5/16	8	1015113	50	.35	5700	.37	2.35	2.07	.99	.72	.64
3/8	10	1015122	40	.75	8800	.48	2.70	2.47	1.12	.90	.78
1/2	13	1015136	12	1.60	15000	.68	3.45	3.31	1.44	1.12	.97
5/8	16	1015145	10	2.68	22600	.81	4.13	3.90	1.72	1.35	1.14
3/4	20	1015154	1	5.00	35300	.93	4.62	4.62	2.03	1.62	1.28
7/8	22	1015163	1	7.50	42700	1.06	5.46	5.46	2.27	2.00	1.49
1	25	1015172	1	11.03	59700	1.22	5.98	6.13	2.44	2.25	1.76
1-1/4	32	1015181	1	20.38	90400	1.50	7.43	7.59	3.07	2.56	2.23

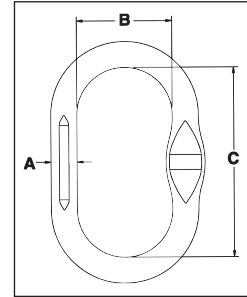
*Ultimate Load is 4 times the Working Load Limit. For Grade 6 LOK-A-LOY®, see page 252.

Grade 100 Alloy Master Links



A-1342N
Master Link

- Alloy Steel - Quenched and Tempered.
- Individually proof tested to values shown with certification
- Proof tested with fixture sized to prevent localized point loading per ASTM A952.
- Proof test certification shipped with each link.
- All sizes are forged unless otherwise specified
- "Look for the Platinum Color - Crosby Grade 100 Alloy Products."
- Engineered Flat for use with S-1325A coupler link.



A-1342N Master Link

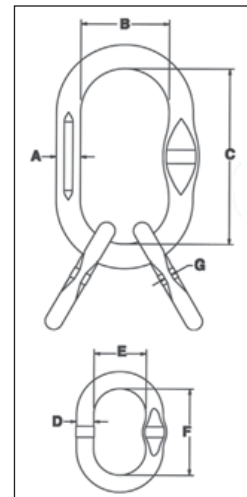
A-1342N Designation Marking	A-1342N Stock No.	Grade 100 Chain Size		Working Load Limit (lb)*	Proof Load (lb)	Weight Each (lb)	Dimensions (in)		
		(in)	(mm)				A	B	C
X 1	1011403	1/4	6 - 7	8600	17200	1.1	.60	2.50	5.00
X 2	1011412	5/16	8	11400	22800	1.7	.70	2.75	5.50
X 3	1011421	3/8	10	17600	35200	2.5	.81	3.00	6.00
X 4	1011430	1/2	13	30000	60000	6.2	1.09	4.00	8.00
X 5	1011449	5/8	16	45200	90400	10.6	1.34	5.00	9.00
X 6	1011458**	3/4	19	70600	141200	18.8	1.63	5.25	10.50
X 7	1011467**	7/8	22	85400	170800	28.8	1.88	6.00	12.00

* Minimum Ultimate Load is 4 times the Working Load Limit.
** Welded.



A-1345N
Master Link
Assembly

- Alloy Steel - Quenched and Tempered.
- Individually proof tested to values shown with certification
- Proof tested with fixture sized to prevent localized point loading per ASTM A952.
- Proof test certification shipped with each link.
- "Look for the Platinum Color - Crosby Grade 100 Alloy Products."
- Engineered Flat for use with S-1325A coupler link.



A-1345N Master Link Assembly

A-1345N Designation Marking	A-1345N Stock No.	Grade 100 Chain Size		Working Load Limit (lb)*	Proof Load (lb)	Weight Each (lb)	Dimensions (in)						
		(in)	(mm)				A	B	C	D	E	F	G
X 2	1011501	-	6	9600	19200	2.3	.70	2.75	5.50	.50	1.57	3.35	.24
X 3	1011510	1/4-5/16	7 - 8	17100	34200	4.2	.84	3.00	6.00	.56	1.77	3.35	.30
X 4	1011529	3/8	10	26400	52800	9.4	1.09	4.00	8.00	.75	2.36	3.94	.33
X 5	1011538	1/2	13	45000	90000	19	1.34	5.00	9.00	1.00	3.00	6.30	.51
X 6	1011547	5/8	16	67800	135600	35	1.65	5.25	10.50	1.25	3.94	7.09	.65
X 7	1011556	3/4	19	105900	211800	54.2	1.88	6.00	12.00	1.50	4.25	8.00	.81
X 8	1011565	7/8	22	128100	256200	112	2.25	8.00	16.00	1.88	6.00	12.00	.88

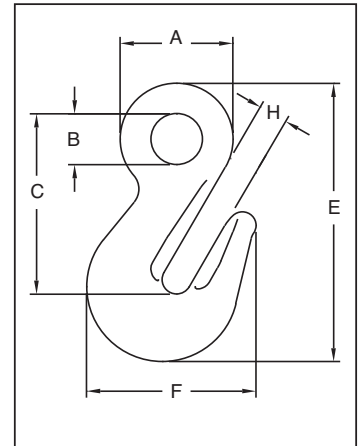
* Minimum Ultimate Load is 4 times the Working Load Limit.

Crosby® Grade 100 Eye Grab Hooks



A-1328
Eye Grab Hook

- Forged Alloy Steel - Quenched and Tempered.
- Individually Proof Tested to 2-1/2 times the Working Load Limit with certification
- Each hook has a Product Identification Code (PIC) for material traceability, along with the size and the name Crosby.
- Suitable for use with Grade 100 and Grade 80 chain.
- Fatigue rated at 1-1/2 times the Working Load Limit at 20,000 cycles.
- "Look for the Platinum Color – Crosby Grade 100 Alloy Products."



A-1328 Eye Grab Hook

Chain Size		Working Load Limit (lb)*	A-1328 Stock No.	Weight Each (lb)	Dimensions (in)					
(in)	(mm)				A	B	C	E	F	H
1/4 - 5/16	7 - 8	5700	1026169	1.0	1.75	.75	2.79	4.29	2.57	.44
3/8	10	8800	1026187	1.6	2.06	.94	3.33	5.13	3.09	.53
1/2	13	15000	1026196	3.3	2.56	1.12	4.11	6.38	3.83	.66
5/8	16	22600	1026205	6.0	3.07	1.31	4.91	7.62	4.53	.79
3/4	18-20	35300	1026214	10.0	3.25	1.50	5.41	8.76	6.00	.94
7/8	22-23	44100	1026223	13.1	3.94	1.81	6.48	10.10	6.53	1.09
1	26	59700	1026232	18.9	4.44	2.00	7.22	11.45	7.75	1.19
1 1/4	32	90400	1026241	39.4	5.64	2.38	9.08	14.59	9.50	1.50

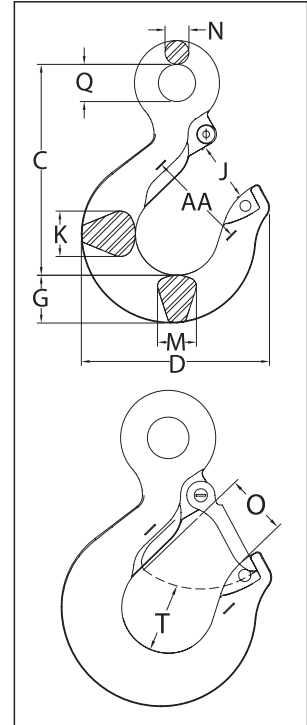
* Ultimate Load is 4 times the Working Load Limit.

Crosby® Grade 100 Eye Sling Hooks



L-1327
Eye Sling Hook

- Forged Alloy Steel - Quenched and Tempered.
- Each hook has a Product Identification Code (PIC) for material traceability, along with the size and the name Crosby.
- 25% stronger than Grade 80.
- Eye Sling hooks incorporate two types of strategically placed markings forged into the product which address two (2) **QUIC-CHECK®** features: Deformation Indicators and Angle Indicators.
- Low profile hook tip
- Utilizes S-4320 integrated latch which meets the world standard for lifting.
 - Heavy duty stamped latch interlocks with the hook tip.
 - High cycle, long life spring.
- When secured with the proper cotter pin through the hole in the tip of hook, meets the intent of OSHA Rule 1926.1431(g) and 1926.1501(g) for personnel lifting.
- Individually Proof Tested to 2-1/2 times the Working Load Limit with certification
- Suitable for use with Grade 100 and Grade 80 chain.
- Fatigue rated at 1-1/2 times the Working Load Limit at 20,000 cycles.
- "Look for the Platinum Color - Crosby Grade 100 Alloy Products."



L-1327 Eye Sling Hook

Grade 100 Alloy Chain Size		Working Load Limit (lb)*	Hook ID Code	L-1327 Stock No.	Weight Each (lb)	Dimensions (in)											Replacement Latch Stock No.
(in)	(mm)					C	D	G	J	K	M	N	O	Q	T	AA	
-	6	3200	DA	1025860	.50	3.34	2.86	.73	.90	.63	.63	.36	.89	.75	.87	1.50	1096325
1/4-5/16	7 - 8	5700	HA	1025869	1.3	4.21	3.90	1.03	1.18	.75	.75	.50	1.15	.75	1.16	2.00	1096468
3/8	10	8800	IA	1025878	2.3	4.99	4.34	1.19	1.53	1.19	1.00	.56	1.40	.94	1.23	2.50	1096515
1/2	13	15000	JA	1025887	4.5	6.36	5.67	1.44	1.78	1.37	1.17	.72	1.67	1.12	1.88	3.00	1096562
5/8	16	22600	KA	1025896	8.4	7.43	6.78	1.88	2.38	1.66	1.44	.88	2.08	1.31	2.03	4.00	1096609
3/4	18-20	35300	KA	1025915	15.0	9.07	7.45	2.25	2.38	1.88	1.63	1.11	2.08	2.44	2.47	4.00	1096609
7/8	22-23	44100	LA	1025924	20.7	10.08	8.30	2.59	2.50	2.19	1.94	1.27	2.27	2.84	2.62	4.00	1096657
1	26	59700	NA	1025933	39.5	12.82	10.30	3.00	3.30	2.69	2.38	1.56	3.02	3.50	2.83	5.00	1096704
1 1/4	32	90400	PA	1025942	105.0	18.19	14.06	4.56	4.25	3.75	3.19	2.00	3.00	4.50	3.88	7.00	1093717

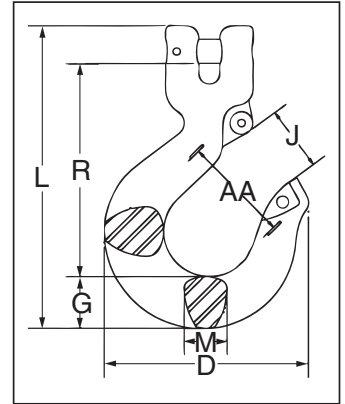
* Ultimate Load is 4 times the Working Load Limit.

Crosby® Grade 100 Clevis Sling Hooks



L-1339
Clevis Sling Hook

- Forged Alloy Steel - Quenched and Tempered.
- Individually Proof Tested to 2-1/2 times the Working Load Limit with certification
- Each hook has a Product Identification Code (PIC) for material traceability, along with the size and the name Crosby.
- Hoist hooks incorporate two types of strategically placed markings forged into the product which address two (2) **QUIC-CHECK®** features: Deformation Indicators and Angle Indicators.
- Low profile hook tip
- New integrated latch (S-4320/S-4339) meets the world standard for lifting.
 - Heavy duty stamped latch interlocks with the hook tip.
 - High cycle, long life spring.
 - When secured with the proper cotter pin through the hole in the tip of hook, meets the intent of OSHA Rule 1926.1431(g) and 1926.1501(g) for personnel lifting.
- Suitable for use with Grade 100 and Grade 80 chain.
- Fatigue rated at 1-1/2 times the Working Load Limit at 20,000 cycles.
- “Look for the Platinum Color - Crosby Grade 100 Alloy Products.”



Crosby 8/10™



Fatigue Rated®

QUIC-CHECK®

L-1339 Clevis Sling Hook

Chain Size		Working Load Limit (lb)*	Hook ID Code	L-1339 Stock No.	Weight Each (lb)	Dimensions (in)							S-4320 Repl. Latch Stock No.	S-4339 Repl. Latch Stock No.
(in)	(mm)					D	G	J	L	M	R	AA		
-	6	3200	DA	1049103	0.64	2.86	0.73	0.93	4.21	0.63	2.95	1.50	1096325	-
1/4	7	4300	HA	1049112	1.58	3.86	1.04	1.19	5.67	0.75	3.97	2.00	1096468	-
5/16	8	5700	HA	1049121	1.57	3.86	1.04	1.19	5.67	0.75	3.95	2.00	1096468	-
3/8	10	8800	IA	1049130	2.58	4.38	1.19	1.53	6.75	1.00	4.71	2.50	1096515	-
1/2	13	15000	JA	1049149	5.28	5.60	1.44	1.78	8.38	1.17	5.89	3.00	1096562	-
5/8	16	22600	KA	1049158	9.81	6.76	1.89	2.41	10.21	1.44	6.97	4.00	1096609	-
3/4	18-20	35300	-	1049167	18.3	8.31	2.83	2.69	13.07	1.97	8.00	4.50	-	1048714
7/8**	22-23**	44100	-	1049176	24.6	9.17	3.07	3.05	13.98	1.97	8.76	5.00	-	1048732

* Ultimate Load is 4 times the Working Load Limit.

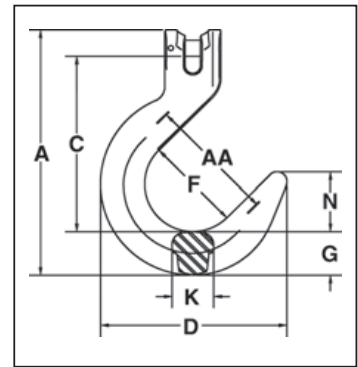
** 7/8 in (22-23 mm) size does not have cam, latch attaches to unique pin.

Chain & Accessories



A-1359
Clevis Foundry Hook

- Forged Alloy Steel - Quenched and Tempered.
- Individually Proof Tested to 2-1/2 times the Working Load Limit with certification
- Each hook has a Product Identification Code (PIC) for material traceability, along with the size and the name Crosby.
- Suitable for use with Grade 100 and Grade 80 chain.
- Fatigue rated at 1-1/2 times the Working Load Limit at 20,000 cycles.
- "Look for the Platinum Color - Crosby Grade 100 Alloy Products."
- Hook can be tip loaded at the reduced Working Load Limit, see below. Operator must ensure the load is retained properly in the hook.



A-1359 Clevis Foundry Hook

Chain Size		A-1359 Stock No.	Working Load Limit at Saddle of Hook (lb)*	Working Load Limit at Tip of Hook (lb)*	Weight Each (lb)	Dimensions (in)							
(in)	(mm)					A	C	D	F	G	K	N	Deformation Indicators AA
1/4	7	1049907	4300	2150	2.15	6.26	4.38	4.82	2.50	1.13	0.88	1.57	3.50
5/16	8	1049911	5700	2850	2.06	6.26	4.37	4.82	2.50	1.13	0.88	1.57	3.50
3/8	10	1049916	8800	4400	4.29	7.76	5.54	5.82	3.00	1.38	1.30	1.88	4.00
1/2	13	1049925	15000	7500	7.97	9.38	6.67	7.04	3.50	1.63	1.50	2.25	4.50
5/8	16	1049934	22600	11300	14.2	11.25	7.68	8.17	4.00	2.19	1.75	2.53	5.00
3/4	18-20	1049943	35300	17650	24.7	14.43	9.79	9.65	5.00	2.40	2.20	3.39	6.00
7/8	22-23	1049952	44100	22050	43.8	16.25	11.02	11.03	5.50	3.07	2.72	3.74	6.50

* Ultimate Load is 4 times the Working Load Limit.

QUIC-CHECK®



Crosby 8/10™

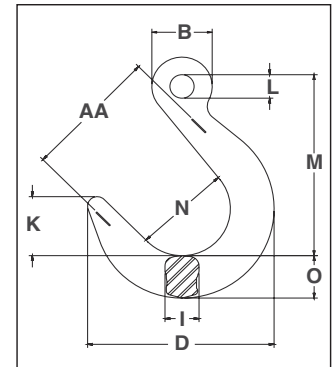


Fatigue Rated



A-1329
Eye Foundry Hook

- Forged Alloy Steel - Quenched and Tempered.
- Individually Proof Tested to 2-1/2 times the Working Load Limit with certification
- Each hook has a Product Identification Code (PIC) for material traceability, along with the size and the name Crosby.
- Suitable for use with Grade 100 and Grade 80 chain.
- Fatigue rated at 1-1/2 times the Working Load Limit at 20,000 cycles.
- "Look for the Platinum Color - Crosby Grade 100 Alloy Products."
- Hook can be tip loaded at the reduced Working Load Limit, see below. Operator must ensure the load is retained properly in the hook.



A-1329 Eye Foundry Hook

Chain Size		A-1329 Stock No.	Working Load Limit at Saddle of Hook (lb)*	Working Load Limit at Tip of Hook* (lb)	Weight Each (lb)	Dimensions (in)								
(in)	(mm)					B	D	I	K	L	M	N	O	Deformation Indicators AA
1/4 - 5/16	7-8	1026280	5700	2850	2.00	1.56	4.82	.88	1.57	.63	4.81	2.50	1.13	3.50
3/8	10	1026289	8800	4400	3.80	2.07	5.82	1.30	1.88	.81	5.50	3.00	1.38	4.00
1/2	13	1026297	15000	7500	7.20	2.53	7.04	1.50	2.25	1.03	7.11	3.50	1.63	4.50
5/8	16	1026306	22600	11300	12.3	3.00	8.17	1.75	2.53	1.25	7.96	4.00	2.19	5.00
3/4	18-20	1026315	35300	17650	23.0	4.13	9.65	2.20	3.39	1.97	10.75	5.00	2.40	6.50
7/8	22-23	1026324	44100	22050	40.6	4.77	11.03	2.72	3.74	2.28	12.25	5.50	3.07	7.00
1	26	1026333	59700	29850	51.7	5.33	11.90	2.83	3.93	2.56	13.37	6.00	3.31	7.50
1 1/4	32	1026342	90400	45200	84.4	6.61	13.25	3.50	4.33	3.15	15.25	6.50	3.84	8.00

* Ultimate Load is 4 times the Working Load Limit.

Crosby® Grade 100 Clevis Grab Hooks

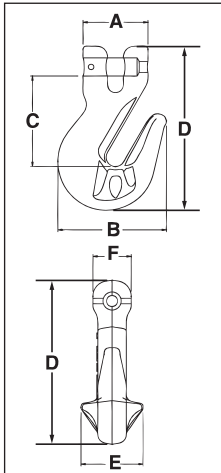


A -1338
Cradle Grab Hook

- Forged Alloy Steel - Quenched and Tempered.
- Innovative cradle design allows for 100% efficiency of Grade 100 chain
- Individually Proof Tested to 2-1/2 times the Working Load Limit with certification
- Each hook has a Product Identification Code (PIC) for material traceability, along with the size and the name Crosby.
- Suitable for use with Grade 100 and Grade 80 chain.
- The use of A-1338 Cradle Grab Hook will allow 100 percent of the chain sling capacity. When used to hook back to chain leg to form a choker, the angle of the choke must be 120 degrees or greater. When used as a chain shortener, minimize twist of chain and ensure chain is fully engaged in hook.
- Fatigue rated at 1-1/2 times the Working Load Limit at 20,000 cycles.
- "Look for the Platinum Color - Crosby Grade 100 Alloy Products."



L-1338
Cradle Grab Hook



Crosby 8/10™

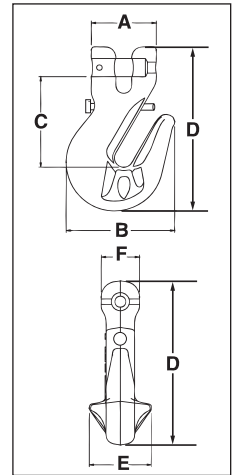


Fatigue Rated

A/L-1338 Cradle Grab Hook

Chain Size (in) (mm)	Working Load Limit (lb)*	A-1338 Stock No.	L-1338 Stock No.	Weight Each (lb)	Dimensions (in)						S-4338 Replacement Latch Kit Stock No.
					A	B	C	D	E	F	
1/4 7	4300	1049417	1049480	1.00	1.72	2.54	2.20	3.88	1.50	.88	1048426
5/16 8	5700	1049426	1049489	.99	1.72	2.54	2.18	3.88	1.50	.88	1048426
3/8 10	8800	1049435	1049498	1.80	1.85	3.09	2.58	4.69	1.83	1.09	1048435
1/2 13	15000	1049444	1049507	3.92	2.39	3.83	3.28	5.88	2.25	1.42	1048444
5/8 16	22600	1049453	1049516	7.00	2.67	4.52	3.85	7.03	2.94	1.75	1048453

* Ultimate Load is 4 times the Working Load Limit.



Chain & Accessories

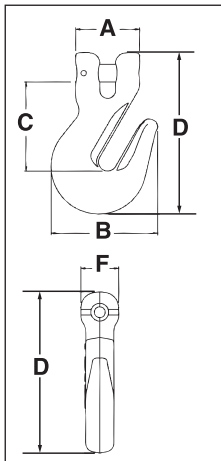


A -1358
Grab Hook

- Forged Alloy Steel - Quenched and Tempered.
- Individually Proof Tested to 2-1/2 times the Working Load Limit with certification
- Each hook has a Product Identification Code (PIC) for material traceability, along with the size and the name Crosby.
- Suitable for use with Grade 100 and Grade 80 chain.
- Fatigue rated at 1-1/2 times the Working Load Limit at 20,000 cycles.
- "Look for the Platinum Color - Crosby Grade 100 Alloy Products."



L -1358
Grab Hook



Crosby 8/10™

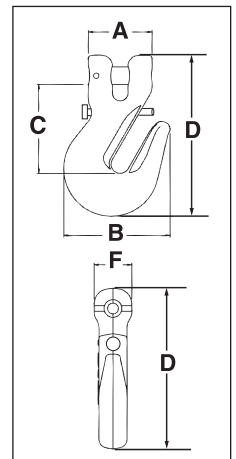


Fatigue Rated

A/L-1358 Grab Hook

Chain Size (in) (mm)	Working Load Limit (lb)*	A-1358 Stock No.	L-1358 Stock No.	Weight Each (lb)	Dimensions (in)					S-4338 Replacement Latch Kit Stock No.
					A	B	C	D	F	
1/4 7	4300	1049610	1049605	1.00	1.72	2.54	2.20	3.88	.88	1048426
5/16 8	5700	1049629	1049614	.99	1.72	2.54	2.18	3.88	.88	1048426
3/8 10	8800	1049638	1049623	1.80	1.85	3.09	2.58	4.69	1.09	1048435
1/2 13	15000	1049647	1049634	3.92	2.39	3.83	3.28	5.88	1.42	1048444
5/8 16	22600	1049656	1049643	7.00	2.67	4.52	3.85	7.03	1.75	1048453

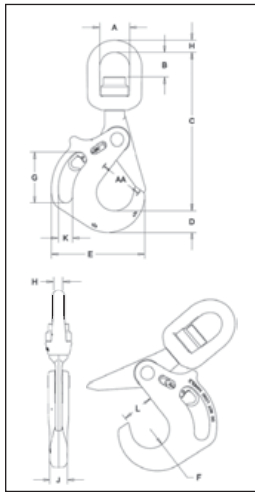
* Ultimate Load is 4 times the Working Load Limit.



Crosby® Grade 100 SHUR-LOC® Handle Hooks



S-13326AH
SHUR-LOC® Handle Swivel Hook with Bearing



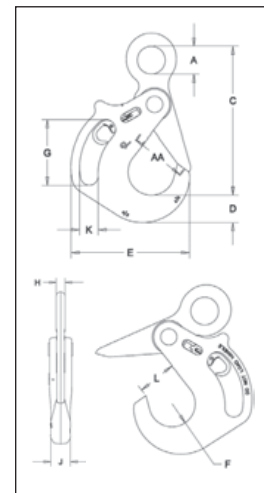
- The SHUR-LOC® Handle Hook allows the user to get a confident grip on a load with ease and comfort.
- Designed with a handle opening big enough to comfortably fit a gloved hand.
- The replaceable pull-trigger allows the user to easily open the SHUR-LOC's positive self-locking latch.
 - Ergonomically designed for easy use and precise control.
 - Secondary side trigger is recessed to avoid inadvertent release.

All SHUR-LOC® hooks have the following features:

- Forged Alloy Steel - Quenched and Tempered.
- Positive Lock Latch is Self-Locking when hook is loaded.
- Individually Proof Tested at 2-1/2 times the 4:1 Working Load Limit with certification
- Rated for both Wire Rope and use with Grade 80/100 Chain.
- G-414 Heavy Thimble should be used with wire rope slings.
- S-13326 Swivel Hook utilizes anti-friction bearing design which allows hook to rotate freely under load.
- Fatigue rated.
- "Look for the Platinum Color – Crosby Grade 100 Alloy Products."
- The SHUR-LOC® hook, if properly installed and locked, can be used for personnel lifting applications and meets the intent of OSHA Rule 1926.1431(g)(1)(i)(A) and 1926.1501(g)(4)(iv)(B).
- Each SHUR-LOC® handle hook has a serial number.



S-1316AH
SHUR-LOC® Handle Eye Hook



SEE APPLICATION AND WARNING INFORMATION
On Pages 272 - 273
Para Español: www.thecrosbygroup.com



S-13326AH SHUR-LOC® Handle Swivel Hooks with Bearings

Chain Size		Grade 100 Alloy Chain Working Load Limit (lb) 4:1*	Working Load Limit (lb) 5:1*	Frame Code	Stock No.	Weight Each (lb)	Dimensions (in)											
(in)	(mm)						A	B	C	D	E	F	G	H	J	K	L	AA**
5/8	16	22,600	18,080	JA	1005014	26	2.75	2.25	10.69	1.97	8.54	1.67	4.69	1.13	1.73	1.32	2.80	4.00
3/4	18/20	35,300	28,240	KA	1005023	37	3.12	2.04	15.49	2.60	10.03	1.99	4.72	1.25	2.05	1.26	3.31	5.00
7/8	22	42,700	34,160	LA	1005041	57	4.09	3.65	18.98	2.72	11.48	2.24	5.35	1.63	2.44	1.57	3.66	6.00
1	26	59,700	47,760	NA	1005050	84	5.00	4.02	21.55	3.11	12.77	2.52	6.46	1.63	2.76	1.57	4.09	6.50

*Ultimate Load is 4 times the Working Load Limit. ** Deformation Indicators.

S-1316AH SHUR-LOC® Handle Eye Hook

Chain Size		Grade 100 Alloy Chain Working Load Limit (lb) 4:1*	Working Load Limit (lb) 5:1*	Frame Code	Stock No.	Weight Each (lb)	Dimensions (in)											
(in)	(mm)						A	B	C	D	E	F	G	H	J	K	L	AA**
5/8	16	22,600	18,080	JA	1023579	18	2.01	10.69	1.97	8.54	1.67	4.69	0.79	1.73	2.80	4.00	2.80	4.00
3/4	18/20	35,300	28,240	KA	1023599	28	2.76	12.03	2.60	10.03	1.99	4.72	0.87	2.05	3.31	5.00	3.31	5.00
7/8	22	42,700	34,160	LA	1023607	39	3.15	13.46	2.72	11.48	2.24	5.35	3.58	2.44	3.66	6.00	3.66	6.00
1	26	59,700	47,760	NA	1023625	60	3.54	15.55	3.11	12.77	2.52	6.46	1.18	2.76	4.09	6.50	4.09	6.50

*Ultimate Load is 4 times the Working Load Limit. ** Deformation Indicators.

Crosby® Grade 100 SHUR-LOC® Hooks

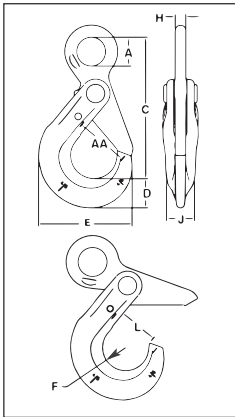


S-1316
Eye Hook

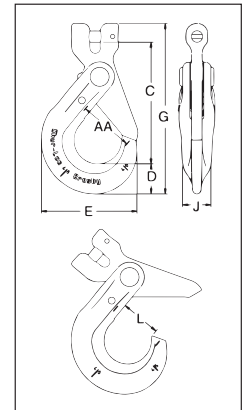
- Forged Alloy Steel - Quenched and Tempered.
- 25% stronger than Grade 80.
- Individually Proof Tested to 2-1/2 times the Working Load Limit with certification
- Recessed trigger design is flush with the hook bod , protecting the trigger from potential damage.
 - Easy to operate with enlarged thumb access.
- Positive Lock Latch is Self-Locking when hook is loaded.
- Eye style is designed with “Engineered Flat” to connect to S-1325 chain coupler.
- Suitable for use with Grade 100 and Grade 80 chain.
- The SHUR-LOC® hook, if properly installed and locked, can be used for personnel lifting applications and meets the intent of OSHA Rule 1926.1431(g)(1)(i)(A) and 1926.1501(g)(4)(iv)(B).
- Fatigue rated at 1-1/2 times the Working Load Limit at 20,000 cycles.
- “Look for the Platinum Color - Crosby Grade 100 Alloy Products.”
- Forged Alloy Steel - Quenched and Tempered.



S-1317
Clevis Hook



SEE APPLICATION AND WARNING INFORMATION
On Pages 271-272
Para Español: www.thecrosbygroup.com



Chain & Accessories

SEE APPLICATION AND WARNING INFORMATION
On Pages 272 - 273
Para Español: www.thecrosbygroup.com

SHUR-LOC® Hook Series with Positive Locking Latch S-1316 Eye Hook

Chain Size		Working Load Limit (lb)*	S-1316 Stock No.	Weight Each (lb)	Dimensions (in)								
(in)	(mm)				A	C	D	E	F	H	J	L	AA
-	6	3200	1022896	.85	.78	3.95	.79	2.60	.67	.31	.63	1.14	1.50
1/4-5/16	7-8	5700	1022914	1.80	1.08	5.31	1.10	3.50	.87	.39	.81	1.48	2.00
3/8	10	8800	1022923	3.40	1.30	6.57	1.17	4.39	1.10	.51	.94	1.83	2.50
1/2	13	15000	1022932	6.00	1.65	8.23	1.67	5.45	1.26	.67	1.16	2.22	3.00
5/8	16	22600	1022941	15.1	2.20	10.06	2.04	6.56	1.50	.87	1.50	2.65	3.50
3/4	18-20	35300	1022942	19.0	2.60	10.77	2.22	7.76	2.01	.87	2.03	3.52	5.00
7/8	22	42700	1022943	28.0	2.87	12.49	2.45	8.75	2.27	.98	2.20	3.83	6.00
1	26	59700	1022944	49.5	3.15	14.60	3.21	9.87	2.46	1.26	2.68	4.09	6.50

* Minimum Ultimate Load is 4 times the Working Load Limit.

S-1317 Clevis Hook

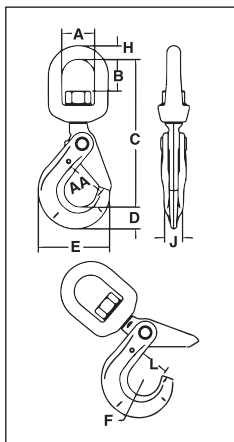
Chain Size		Working Load Limit (lb)*	S-1317 Stock No.	Weight Each (lb)	Dimensions (in)						
(in)	(mm)				C	D	E	G	J	L	AA
-	6	3200	1028991	.77	3.44	.79	2.60	4.75	.63	1.16	1.50
1/4	7	4300	1029000	1.80	4.48	1.10	3.51	6.25	.81	1.48	2.00
5/16	8	5700	1029009	1.80	4.47	1.10	3.51	6.25	.81	1.48	2.00
3/8	10	8800	1029018	3.66	5.53	1.17	4.39	7.54	.94	1.83	2.50
1/2	13	15000	1029027	6.80	6.81	1.67	5.49	9.52	1.16	2.22	3.00
5/8	16	22600	1029036	11.9	8.22	2.04	6.55	11.61	1.50	2.65	3.50
3/4	18-20	35300	1029071	15.0	9.42	2.22	7.76	13.21	2.03	3.52	5.00
7/8	22	42700	1029080	28.0	11.14	2.45	8.75	15.45	2.20	3.83	6.00
1	26	59700	1029089	49.5	12.56	3.21	9.87	18.44	2.68	4.09	6.50

* Minimum Ultimate Load is 4 times the Working Load Limit.

Crosby® Grade 100 SHUR-LOC® Hooks



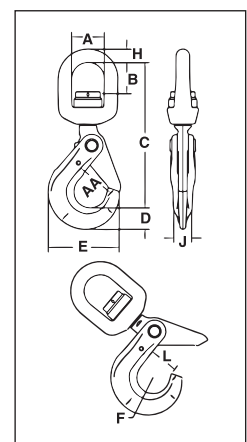
S-1326
SHUR-LOC® Swivel Hook



- Forged Alloy Steel - Quenched and Tempered.
- Individually Proof Tested at 2-1/2 times the Working Load Limit with certification
- Recessed trigger design is flush with the hook bod , protecting the trigger from potential damage.
 - Easy to operate with enlarged thumb access.
- Positive Lock Latch is Self-Locking when hook is loaded.
- Rated for both Wire Rope, (reference page 117 for Wire Rope), and use with Grade 80/100 Chain.
- G-414 Heavy Thimble should be used with wire rope slings.
- Trigger Repair Kit available (S-4316). Consists of spring, roll pin and trigger.
- S-13326 Swivel Hook utilizes anti-friction bearing design which allows hook to rotate freely under load.
- Fatigue rated.
- The SHUR-LOC® hook, if properly installed and locked, can be used for personnel lifting applications and meets the intent of OSHA Rule 1926.1431(g)(1)(i)(A) and 1926.1501(g)(4)(iv)(B).
- “Look for the Platinum Color – Crosby Grade 100 Alloy Products.”
- U.S. Patent 5,381,650 and foreign equivalents. Use in corrosive environment requires shank and nut inspection in accordance with ASME B30.10-1.10.4(b)(5)(c)2009.



S-13326
SHUR-LOC® Swivel Hook



S-1326 SHUR-LOC® Swivel Hooks • Suitable for infrequent, non-continuous rotation under load.

Chain Size		S-1326 Stock No.	Grade 100 Alloy Chain Working Load Limit (lb) 4:1*	Weight Each (lb)	Dimensions (in)										
(in)	(mm)				A	B	C	D	E	F	H	J	L	AA	
-	6	1004304	3200	1.26	1.50	1.32	6.13	.79	2.60	.67	.50	.63	1.13	1.50	
1/4-5/16	7-8	1004313	5700	2.62	1.75	1.59	7.60	1.10	3.50	.87	.63	.81	1.38	2.00	
3/8	10	1004322	8800	4.70	2.00	1.73	8.83	1.17	4.39	1.10	.75	.94	1.75	2.50	
1/2	13	1004331	15000	8.64	2.50	2.38	11.20	1.67	5.45	1.26	1.00	1.16	2.11	3.00	
5/8	16	1004340	22600	17.00	2.75	2.70	12.98	2.05	6.56	1.50	1.13	1.50	2.49	3.50	
3/4	18-20	1004349	35300	24.00	2.83	2.52	17.42	2.22	7.76	2.01	1.10	2.03	3.52	5.00	
7/8	22	1004358	42700	29.00	3.44	3.19	16.47	2.45	8.75	2.26	1.30	2.20	3.83	6.00	

* Ultimate Load is 4 times the Working Load Limit.

S-13326 SHUR-LOC® Swivel Hooks • Suitable for frequent rotation under load.

Chain Size		S-13326 Stock No.	Grade 100 Alloy Chain Working Load Limit (lb) 4:1*	Weight Each (lb)	Dimensions (in)										
(in)	(mm)				A	B	C	D	E	F	H	J	L	AA	
-	6	1004404	3200	1.50	1.50	1.14	6.17	.79	2.60	.67	.50	.63	1.13	1.50	
1/4-5/16	7-8	1004413	5700	3.10	1.75	1.52	7.54	1.10	3.50	.87	.63	.81	1.44	2.00	
3/8	10	1004422	8800	5.26	2.00	1.61	8.88	1.16	4.35	1.10	.75	.94	1.83	2.50	
1/2	13	1004431	15000	11.22	2.50	2.03	11.11	1.66	5.45	1.26	1.00	1.16	2.19	3.00	
5/8	16	1004440	22600	17.32	2.75	2.25	12.61	2.05	6.56	1.50	1.13	1.50	2.61	3.50	

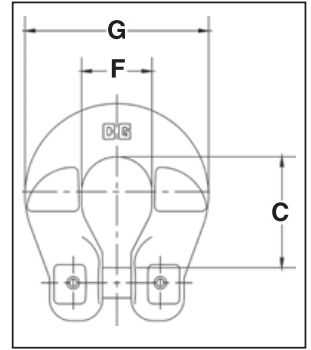
* Ultimate Load is 4 times the Working Load Limit.

Crosby® Grade 100 Chain Fittings



S-1325A
Chain Coupler

- Designed to connect Grade 100 chain fittings produced with “Engineered Flat” to Grade 100 chain.
- Forged Alloy Steel - Quenched and Tempered.
- Suitable for use with Grade 100 and Grade 80 chain.
- Individually Proof Tested to 2-1/2 times the Working Load Limit with certification
- Locking system that provides for simple assembly and disassembly – no special tools required.
- Fatigue rated at 1-1/2 times the Working Load Limit at 20,000 cycles.
- “Look for the Platinum Color – Crosby Grade 100 Alloy Products.”



Crosby 8/10™



Fatigue Rated

S-1325A Grade 100 Chain Coupler

Chain Size		S-1325A Stock No.	Working Load Limit (lb)*	Weight Each (lb)	Dimensions (in)		
(in)	(mm)				C	F	G
-	6	1098496	3200	.25	1.03	.74	1.74
1/4	7	1098500	4300	.50	1.41	.88	2.32
5/16	8	1098504	5700	.50	1.40	.88	2.32
3/8	10	1098508	8800	.80	1.84	1.18	2.72
1/2	13	1098512	15000	1.70	2.12	1.50	3.62
5/8	16	1098516	22600	1.90	2.84	1.96	4.40

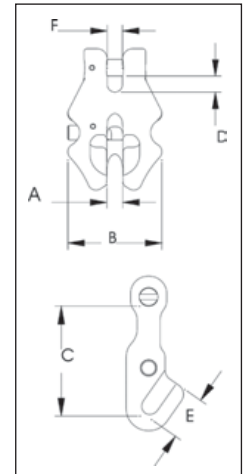
* Minimum Ultimate Load is 4 times the Working Load Limit.

Chain & Accessories



S-1311N
Chain Shortener Link

- Alloy Steel - Quenched and Tempered.
- Individually Proof Tested to 2-1/2 times the Working Load Limit with certification
- Suitable for use with Grade 100 and Grade 80 chain.
- Spring loaded chain locking system keeps chain in place under slack conditions.
- The use of S-1311N Chain Shortener will allow 100 percent of the chain sling capacity.
- Fatigue rated at 1-1/2 times the Working Load Limit at 20,000 cycles.
- “Look for the Platinum Color - Crosby Grade 100 Alloy Products.”



Crosby 8/10™



Fatigue Rated

S-1311N Grade 100 Chain Shortener Link

Chain Size		S-1311N Stock No.	Working Load Limit (lb)*	Weight Each (lb)	Dimensions (in)					
(in)	(mm)				A	B	C	D	E	F
-	6	1017860	3200	.49	.30	1.76	1.83	.29	.76	.29
1/4	7	1017869	4300	.84	.34	2.04	2.17	.34	.88	.33
5/16	8	1017878	5700	1.22	.40	2.36	2.53	.39	1.01	.38
3/8	10	1017897	8800	2.03	.48	2.84	3.07	.48	1.23	.46
1/2	13	1017906	15000	4.31	.62	3.56	3.77	.61	1.57	.59
5/8	16	1017915	22600	7.20	.73	4.24	4.64	.73	1.91	.70

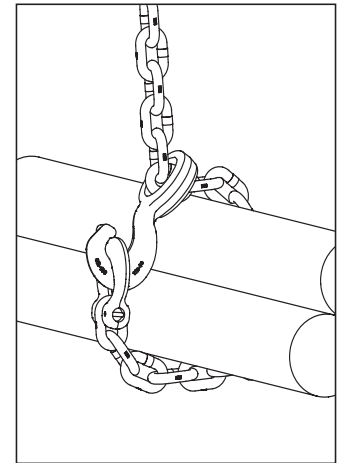
* Minimum Ultimate Load is 4 times the Working Load Limit.

Crosby® Grade 100 Chain Fittings



A-1355
Chain Choker Hook

- Forged Alloy Steel - Quenched and Tempered.
- Individually Proof Tested with certification
- Rated for Grade 100 chain in choker applications.
- Each hook has a Product Identification Code (PIC) for material traceability, along with the size and the name Crosby.
- 25% stronger than Grade 80.
- Fatigue rated at 1-1/2 times the Working Load Limit at 20,000 cycles.
- "Look for the Platinum Color - Crosby Grade 100 Alloy Products."
- For use with S-1325 Chain Coupler Link.

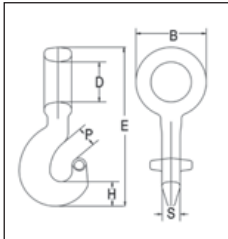


Crosby 8/10™



Fatigue Rated

A-1355 Chain Choker Hook



Grade 100 Alloy Chain Size		Working Load Limit (lb)*	A-1355 Stock No.	Weight Each (lb)	Dimensions (in)					
(in)	(mm)				B	D	E	H	P	S
1/4-5/16	7-8	5700	1015204	.77	2.05	1.18	4.83	.79	.69	.65
3/8	10	8800	1015213	1.65	2.66	1.57	6.07	.93	.93	.69
1/2	13	15000	1015222	3.14	3.35	2.03	7.61	1.18	1.26	.94
5/8	16	22600	1015231	6.97	4.21	2.52	9.68	1.54	1.12	1.18

* Ultimate Load is 4 times the Working Load Limit.

SLING IDENTIFICATION TAG KITS



Stamped ID Tag



RFID Equipped Tags



Forged ID Tags



Stamped RFID Tag



Wire Rope



RFID QUIC Tag

Stamped ID Tags

- Heavy Duty, Prestamped, Zinc plated metal tag.
- 4-1/8" x 1-7/16" tag dimensions.
- 2-1/2" diameter metal attaching ring.
- Tag prestamped for simple inclusion of sling type, Working Load Limit, reach, serial number, chain size and grade.

ID Tag Stock No.	Carton Qty.	Weight Per Carton (lb)
115244	50	10.55

ID Tags

- Heavy Duty tags.
- 1-5/16" diameter ring opening (will fit 1/4" - 5/8" A-1337).
- Chain tags meet requirements of ASME B30.9 for Sling Identification
- Raised edge and recessed pads to protect lettering.
- Raised lettering for quick reference.



Stock No.	Style	Material Type	RFID Equipped	Tag Size (in)	Weight Each (lb)
115369	Chain	Cast Stainless Steel	Yes	6-5/16 x 1-5/8	.46
115350	Wire Rope	Cast Stainless Steel	Yes	1-11/16 x 1-5/16	.07
115217	Chain	Forged Steel	No	5-3/4 x 1-7/8	.40
115353	Chain	Stamped Zinc Plated Steel	Yes	5-3/4 x 1-5/8	.29
115355	Wire Rope	Stamped Zinc Plated Steel	Yes	1-11/16 x 1-5/16	.04
1224692	Zip Tie	High Crystalline Polyamide	Yes	7.625	.05

Crosby® Grade 80 Chain Sling Configurations

HOW TO MAKE YOUR CROSBY® GRADE 80 ALLOY CHAIN SLING

Follow these simple steps in making a sling assembly:

1. Determine the maximum load to be lifted by the sling assembly.
2. Choose the type of sling assembly suited for the shape of the load and the size of the sling assembly for the load to be lifted. The decision must take into account the angle of the sling legs in multileg slings.
3. Determine the overall reach from bearing point of master link to bearing point on hook (see Fig. 1).
4. Select components, assemble chain and components.
5. Affix sling identification tag to sling. The tag is available from your Authorized Crosby Distributor.

Each sling shall be marked to show: name or trademark of manufacturer, grade, nominal chain size, number of legs, rated load for the type(s) of hitch(es) used and angle upon which it is based.

If measurement comes in the link, cut the following link. For two leg type slings, count the links and use an even number for clevis hooks



Fig. 1

and an odd number for eye hooks. This will position hooks in the same plane. In multileg slings always use the same number of links in each leg.

When using chain slings in choker applications, the Working Load Limit must be reduced by 20%. Crosby recommends a minimum angle of choke of 120 degrees. Consult Crosby when planning to use an angle of choke of less than 120 degrees. If Crosby A-1338 cradle grab hooks are used at a minimum angle of choke of 120 degrees, the full sling rated WLL can be utilized.



In shortening applications, a 20% reduction of the Working Load Limit is required except when using the Crosby A-1338 Cradle Grab Hooks, S-1311 Chain Shortener Link, the A-1355 Chain Choker Hook in conjunction with the S-1325 Chain Coupler Link, or the Crosby **ELIMINATOR®** shortener link. They can be used without any reduction to the Working Load Limit.



The Slings shown here are standard assemblies that can be made from "Proof Tested" Crosby Components and Alloy Chain supplied by your authorized Crosby distributor. Assemblies must include chain sling identification tag (not shown, see page 238).



TYPE CO TYPE SOS TYPE SOG TYPE SOF TYPE SSS TYPE SGS TYPE ASOS TYPE ASOF TYPE ASOG TYPE SOCH

Type	Description	Type	Description
CO	Single Chain Sling with Master Link each end	SGS	Single Chain Sling with Grab Hook and Sling Hook
SOS	Single Chain Sling with Master Link and Sling Hook	ASOS	Adjustable Single Chain with Master Link and Sling Hook
SOG	Single Chain Sling with Master Link and Grab Hook	ASOF	Adjustable Single Chain Sling with Master Link and Foundry Hook
SOF	Single Chain Sling with Master Link and Foundry Hook	ASOG	Adjustable Single Chain Sling with Master Link and Grab Hook
SSS	Single Chain Sling with Sling Hook each end	SOCH	Single with 1355 Choker



TYPE DOS TYPE DOG TYPE DOF TYPE ADOS TYPE ADOG TYPE DOCH

Type	Description	Type	Description
DOS	Double Chain Sling with Master Link and Sling Hook	ADOS	Adjustable Double Chain Sling with Master Link and Sling Hook
DOG	Double Chain Sling with Master Link and Grab Hook	ADOG	Adjustable Double Chain Sling with Master Link and Grab Hook
DOF	Double Chain Sling with Master Link and Foundry Hook	DOCH	Double with 1355 Choker

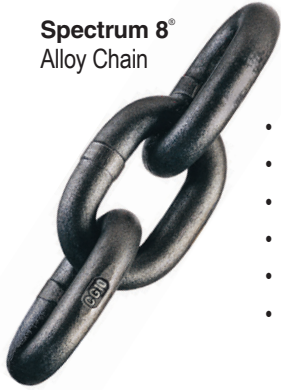


TYPE TOS TYPE TOG TYPE TOF TYPE TOCH TYPE QOS TYPE QOG TYPE QOF

Type	Description	Type	Description
TOS	Triple Chain Sling with Master Link and Sling Hook	QOS	Quadruple Chain Sling with Master Link and Sling Hook
TOG	Triple Chain Sling with Master Link and Grab Hook	QOG	Quadruple Chain Sling with Master Link and Grab Hook
TOF	Triple Chain Sling with Master Link and Foundry Hook	QOF	Quadruple Chain Sling with Master Link and Foundry Hook
TOCH	Triple Chain Sling with 1355 Choker		

Chain & Accessories

Spectrum 8[®]
Alloy Chain



- Alloy Steel.
- Heat Treated.
- Finish – Black rust preventative coating.
- Permanently embossed with CG (Crosby Group) and 8 (Grade).
- Proof Tested at 2 times the Working Load Limit with certification
- Standard container – fiber drum


Grade 80 Alloy Chain (Recommended for overhead lifting applications)

Chain Size (in)	Spec. 8 Drum Stock No.	Feet Per Drum	Material Size (in)	Working Load Limit (lb)*	Maximum Inside Length (in)	Maximum Inside Width (in)	Maximum Length 100 Links (in)	Weight Per 100 Feet (lb)
9/32 (1/4)	273527	500	.276	3500	.87	.42	90	72
5/16	273536	500	.343	4500	1.01	.49	100	114
3/8	273545	500	.394	7100	1.23	.58	125	148
1/2	273554	300	.512	12000	1.57	.77	164	243
5/8	273563	200	.630	18100	1.93	.90	202	351
3/4	273572	100	.787	28300	2.42	1.14	252	584
7/8	273581	100	.866	34200	2.66	1.26	277	705
1	273590	75	1.024	47700	3.28	1.54	328	1041
1-1/4	273599	66	1.260	72300	4.03	1.89	403	1478


* Proof loaded at 2 times Working Load Limit. Ultimate Load is 4 times the Working Load Limit.

Crosby provides two methods of attaching Spectrum 8[®] chain to Crosby fittings.

CONNECTING AND COUPLER CHAIN LINKS



A-1337
LOK-A-LOY[®]
Connecting Link
Refer to page 227



S-1325
Grade 100
Coupler Link
Refer to page 237

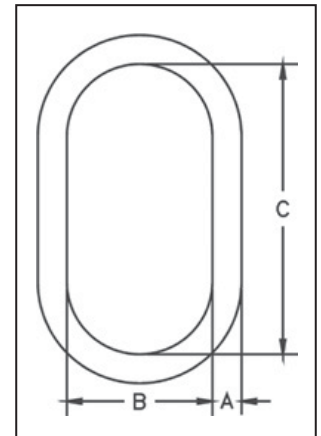
Alloy Master Links



A-342
Alloy Master Link

Ratings below are for use with chain slings fabricated in accordance with ASME B30.9. For other applications, see pages 160.

- Alloy Steel – Quenched and Tempered.
- Proof Tested with special fixtures sized to prevent localized point loading. See pages 160 and 276 for proof test values and fixtures
- Crosby 7/8" to 2" 342 master links are type approved to DNV GL-ST-E271-2.7-1 Offshore Containers. These Crosby master links are 100% proof tested, MPI and impact tested. The tests are conducted by Crosby and 3.1 test certification is available upon request. Refer to page 164 for Crosby COLD TUFF® master links that meet the additional requirements of DNV rules for certification of lifting appliances - Loose Gear.
- Meets or exceeds all requirements of ASME B30.26 including identification, ductility, design factor, proof load and temperature requirements. Importantly, these links meet other critical performance requirements including fatigue life, impact properties and material traceability, not addressed by ASME B30.26.
- Forgings have a Product Identification Code (PIC) for material traceability, along with the size, the name Crosby and USA in raised lettering.
- Selected sizes designated with "W" in the size column have enlarged inside dimensions to allow additional room for sling hardware and crane hook.
- Incorporates patented **QUIC-CHECK®** deformation indicators.



Chain & Accessories

A-342 Alloy Master Links

Size		A-342 Stock No.	Weight Each (lb)	Chain Size		Single Leg		Double Leg		Dimensions (in)			
(in)	(mm)			(in)	(mm)	WLL Based on Grade 80 Chain (lb)*	WLL Based on Grade 100 Chain (lb)*	WLL Based on Grade 80 Chain 60° Sling Angle (lb)*	WLL Based on Grade 100 Chain 60° Sling Angle (lb)*	A	B	C	Deformation Indicator
1/2W	13W	1014266	1.3	1/4	7	3500	4300	6100	7400	.62	2.80	5.00	3.50
				5/16	8	4500	5700	-	-				
5/8	16	1014280	1.5	5/16	8	4500	5700	7800	-	.62	3.00	6.00	3.50
				5/16	8	4500	5700	-	9900				
3/4W	19W	1014285	2.0	3/8	10	7100	8800	12300	-	.73	3.20	6.00	4.00
				3/8	10	7100	8800	12300	15200				
7/8W	22W	3522213	3.3	1/2	13	12000	15000	-	-	.88	3.75	6.38	4.50
				1/2	13	12000	15000	20800	26000				
1W	26W	3522214	6.1	5/8	16	18100	22600	-	-	1.10	4.30	7.50	5.50
				5/8	16	18100	22600	31300	39100				
1-1/4W	32W	3522215	12.0	3/4	20	28300	35300	-	-	1.33	5.50	9.50	7.00
				3/4	20	28300	35300	49000	61100				
1-1/2W	38W	3522216	18.6	7/8	22	34200	42700	-	-	1.61	5.90	10.50	7.50
				7/8	22	-	-	59200	74000				
1-3/4	44	3522217	25.2	1	26	47700	59700	-	-	1.75	6.00	12.00	7.50
				1	26	-	-	82600	103400				
2	51	3522218	37.0	1-1/4	32	72300	90400	-	-	2.00	7.00	14.00	9.00
				1-1/4	32	-	-	125200	-				
2-1/4	57	1014422	54.1	1-1/4	32	-	-	125200	-	2.25	8.00	16.00	10.00
2-1/2	63	1014468	68.5	1-1/4	32	72300	90400	125200	156600	2.5	8.38	16.00	11.00

* Chain slings require that the Minimum Ultimate Load be 4 times the Working Load Limit. Refer to page 160 to determine products actual Ultimate Load. Proof Test Load equals or exceeds the requirement of ASTM A952(8.1) and ASME B30.9-1.4 for the chain size and number of legs. See chart on page 240 for other sling angles.

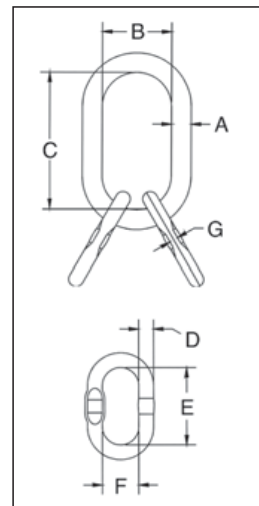
Alloy Master Link Assembly with Engineered Flat



A-345
Master Link Assembly
with Engineered Flat

Ratings below are for use with chain slings fabricated in accordance with ASME B30.9. For other applications, see pages 161.

- Alloy Steel – Quenched and Tempered.
- Individually Proof Tested with certification. (See pages 161 for Proo Test values.)
- Proof Tested with 60% inside width special fixtures sized to prevent localized point loading per ASTM A-952. Reference page 276.
- Meets or exceeds all requirements of ASME B30.26 including identification, ductility, design factor, proof load and temperature requirements. Importantly, these links meet other critical performance requirements including fatigue life, impact properties and material traceability, not addressed by ASME B30.26.
- Forgings have a Product Identification Code (PIC) for material traceability, along with the size, the name Crosby and USA in raised lettering.
- Selected sizes designated with “W” in the size column have enlarged inside dimensions to allow additional room for sling hardware and crane hook.
- Incorporates patented **QUIC-CHECK**[®] deformation indicators.



A-345 Master Link Assembly with Engineered Flat (for use with S-1325A coupler link)

Size		A-345 Stock No.	Weight Each (lb)	Chain Size		Three and Four Leg Sling		Dimensions (in)							Deformation Indicator	Engineered Flat for S-1325 (in) — (mm)
(in)	(mm)			(in)	(mm)	WLL Based on Grade 80 Chain 60° Sling Angle (lb)*	WLL Based on Grade 100 Chain 60° Sling Angle (lb)*	A	B	C	D	E	F	G		
3/4W	19W	1014739	3.5	1/4	7	9100	11200	.73	3.20	6.00	.56	3.35	1.77	.30	4.00	1/4"-5/16", 7-8mm
7/8W	22W	1014742	4.8	5/16	8	11700	14800	.88	3.75	6.38	.56	3.35	1.77	.30	4.50	-
1W	26W	1014766	9.3	3/8	10	18400	22900	1.10	4.30	7.50	.75	3.94	2.36	.33	5.50	3/8", 10mm
1-1/4W	32W	1014779	15.8	1/2	13	31200	39000	1.33	5.50	9.50	1.00	6.30	3.54	.51	7.00	1/2", 13mm
1-1/2W	38W	1014807	34.1	5/8	16	47000	58700	1.61	5.90	10.50	1.25	7.09	3.94	.65	7.50	5/8", 16mm
1-3/4	44	1014810	46.7	3/4	20	73500	91700	1.75	6.00	12.00	1.50	6.00	4.00	-	7.50	No Flat
2-1/4	57	1014845	97	7/8	22	88900	110900	2.25	8.00	16.00	1.88	8.00	5.50	-	10.00	No Flat
				1	26	123900	155100	2.25	8.00	16.00	1.88	8.00	5.50	-	10.00	No Flat
3-1/4	83	1014986	255	1-1/4	32	187800	234900	3.25	10.00	20.00	2.50	11.25	8.00	-	13.50	No Flat

* Chain slings require that the Minimum Ultimate Load be 4 times the Working Load Limit. Refer to page 161 to determine products actual Ultimate Load. Proof Test Load equals or exceeds the requirement of ASTM A952(8.1) and ASME B30.9-1.4 for the chain size and number of legs. See chart on page 240 for other sling angles.

Welded Master Links Assembly with Engineered Flat

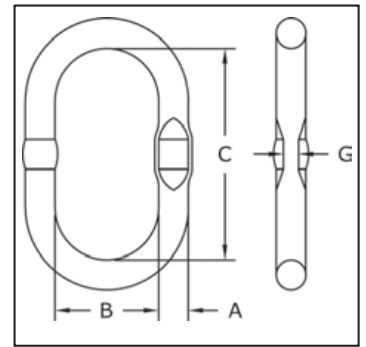


A-344

Welded Master Link

Ultimate Load is 5 times the Working Load Limit. Applications with wire rope and synthetic sling generally require a design factor of 5. Based on single leg sling (in-line load), or resultant load on multiple legs with an included angle less than or equal to 120 degrees. ** Proof Test Load equals or exceeds the requirement of ASTM A952(8.1) and ASME B30.9. For use with chain slings, refer to page 245 for sling ratings and page 240 for proper master link selection.

- Alloy Steel - Quenched and Tempered.
- Individually Proof Tested to values shown, with certification
- Proof Tested with 70% inside width special fixtures sized to prevent localized point loading per EN 1677-4, reference page 276.
- Each link has a Product Identification Code (PIC) for material traceability, along with the size and the name Crosby® or “CG”.
- Large inside width and length to allow additional room for sling hardware and crane hook.
- Engineered Flat for use with S-1325A coupler link.
- Meets or exceeds all requirements of ASME B30.26 including identification, ductility, design factor, proof load and temperature requirements. Importantly, these links meet other critical performance requirements including fatigue life, impact properties and material traceability, not addressed by ASME B30.26.
- Master links are type approved to DNV Certification Notes 2.7-1-Offshore Containers. These Crosby master links are 100% proof tested and impact tested. The tests are conducted by Crosby and 3.1 test certification is available upon request.
- 7/16” through 1-7/32” have Engineered Flat.



7/16” through 1-7/32” have Engineered Flat



Chain & Accessories

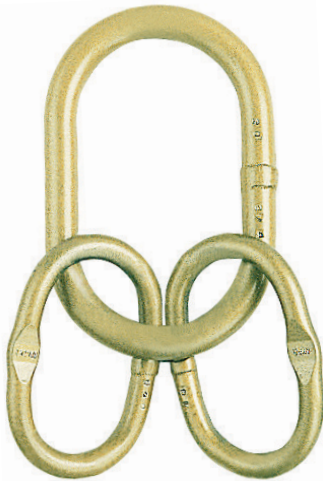
A-344 Welded Master Link with Engineered Flat

Size		A-344 Stock No.	Weight Each (lb)	Single Leg			Double Leg			Dimensions (in)				Engineered Flat Size for S-1325A (in)
(in)	(mm)			Chain Size		WLL Based on Grade 8 Chain (lb)*	Chain Size		WLL Based on Grade 8 Chain 60° Sling Angle (lb)*	A	B	C	G	
				(in)	(mm)		(in)	(mm)						
7/16	12	1256862	0.66	1/4	7	3500	-	-	-	.47	2.36	4.72	.24	1/4
1/2	13	1256932	0.79	5/16	8	4500	1/4	7	6100	.51	2.36	4.72	.26	1/4
11/16	17	1257002	1.85	3/8	10	7100	5/16	8	7800	.67	3.54	6.30	.33	3/8
3/4	19	1257072	2.36	1/2	13	12000	3/8	10	12300	.75	3.54	6.30	.33	3/8
7/8	22	1257212	3.55	5/8	16	18100	-	-	-	.87	3.94	7.10	.41	1/2
1	25	1257282	5.22	-	-	-	1/2	13	20800	.98	4.53	8.10	.53	1/2
1-1/8	28	1257382	8.33	3/4	20	28300	-	-	-	1.10	5.71	10.83	.53	1/2
1-7/32	31	1257422	10.3	7/8	22	34200	5/8	16	31300	1.22	5.71	10.83	.61	5/8
1-7/16	36	1257492	15.1	1	26	47700	3/4	20	49000	1.42	6.10	11.20	-	---
1-3/4	45	1257562	28.1	-	-	-	7/8	22	59200	1.77	7.10	13.40	-	---
2	51	1257632	38.1	1-1/4	32	72300	1	26	82600	2.00	8.50	15.30	-	---

* Chain slings require that the Minimum Ultimate Load be 4 times the Working Load Limit. Refer to page 162 to determine products actual Ultimate Load. See chart on page 240 for other sling angles.

**There are no manufactured flats on links over 31mm (1 1/4)

Welded Master Links Assembly with Engineered Flat

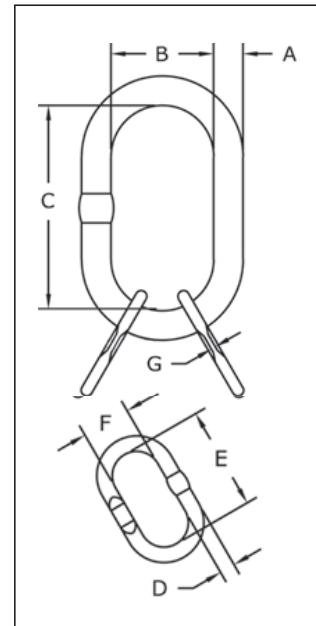


A-347

Welded Master Link

Ultimate Load is 5 times the Working Load Limit. Applications with wire rope and synthetic sling generally require a design factor of 5. Based on single leg sling (in-line load), or resultant load on multiple legs with an included angle less than or equal to 120 degrees. ** Proof Test Load equals or exceeds the requirement of ASTM A952(8.1) and ASME B30.9. For use with chain slings, refer to page 240 for sling ratings and page 245 for proper master link selection.

- Alloy Steel — Quenched and Tempered.
- Individually Proof Tested to values shown, with certification
- Proof Tested with 70% inside width special fixtures sized to prevent localized point loading per EN 1677-4, reference page 276.
- Forgings have a Product Identification Code (PIC) for material traceability, along with the size, the name Crosby or "CG".
- 347 master links are type approved to DNV Certification Notes 2.7-1- Offshore Containers. These Crosby master links are 100% proof tested and impact tested. The tests are conducted by Crosby and 3.1 test certification is available upon request.
- Engineered Flat for use with S-1325A coupler link.
- Meets or exceeds all requirements of ASME B30.26 including identification, ductility, design factor, proof load and temperature requirements. Importantly, these links meet other critical performance requirements including fatigue life, impact properties and material traceability, not addressed by ASME B30.26.



11/16" through 1-7/32" have Engineered Flat



A-347 Welded Master Link Assembly with Engineered Flat

Size		A-347 Stock No.	Weight Each (lb)	Chain Size		WLL Based on Grade 8 Chain 60° Sling Angle (lb)*	Dimensions (in)							Engineered Flat Size for S-1325 (in)
(in)	(mm)			(in)	(mm)		A	B	C	D	E	F	G	
1/2	13/12	1257692	1.80	-	-	5300	.51	2.36	4.72	.47	3.35	1.77	.24	-
11/16	17/13	1257762	3.40	-	6	6500	.67	3.54	6.30	.51	4.72	2.36	.26	1/4
3/4	19/13	1257832	4.00	1/4	7	9100	.75	3.54	6.30	.51	4.72	2.36	.26	1/4
7/8	22/17	1257972	7.20	5/16	8	11700	.87	3.94	7.10	.67	6.30	3.54	.33	5/16
1-1/8	28/22	1258142	15.4	3/8	10	18400	1.10	5.71	10.83	.87	7.10	3.94	.41	3/8
1-7/32	31/25	1258182	20.8	1/2	13	31200	1.22	5.71	10.83	.98	8.10	4.53	.53	1/2
1-9/16	40/31	1258332	40.5	5/8	16	47000	1.57	6.30	11.80	1.22	10.63	5.50	-	**
1-3/4	45/36	1258402	58.2	3/4	20	73500	1.77	7.10	13.40	1.42	11.20	6.10	-	**
2	51/45	1258462	95.0	7/8	22	88900	2.00	7.50	13.80	1.80	13.40	7.10	-	**

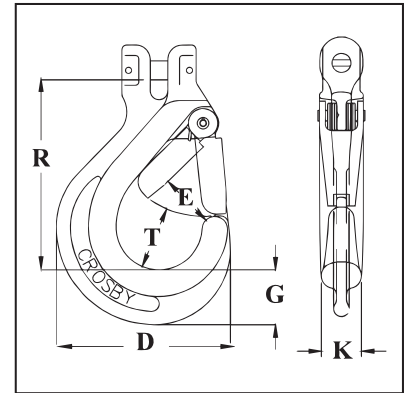
* Chain slings require that the Minimum Ultimate Load be 4 times the Working Load Limit. Refer to page 163 to determine products actual Ultimate Load. See chart on page 240 for other sling angles. **There are no manufactured flats on links over 31mm (1 1/4)

Grade 80 Latch Hooks



S-314A
Clevis
Chain Hook

- Hook is Forged Alloy Steel - Quenched and Tempered.
- Individually Proof Tested at 2-1/2 times the Working Load Limit with certification
- Integrated heavy duty latch.
- Large throat opening.
- Anti-fouling due to carefully designed contours.
- Meets ASTM A-952 for Grade 80 chain fittings
- Fatigue rated.
- "Look for the color Gold – Crosby Alloy Hooks."



Fatigue Rated

S-314A Clevis Chain Hook with Integrated Latch

Chain Size		S-314A Stock No.	Grade 8 Alloy Chain Working Load Limit (lb) 4:1*	Weight Each (lb)	Dimensions (in)						Replacement Latch Stock No.
(in)	(mm)				D	E	G	K	R	T	
-	6	1225020	2500	.69	2.60	.81	.79	.63	2.84	1.02	1291332
1/4 - 5/16	7 - 8	1225021	4500	1.53	3.50	1.08	1.10	.81	3.83	1.28	1291402
3/8	10	1225091	7100	2.84	4.35	1.42	1.16	.94	4.92	1.66	1291472
1/2	13	1225161	12000	5.17	5.45	1.52	1.67	1.16	5.64	1.94	1291542
5/8	16	1225162	18100	9.00	6.56	1.91	2.05	1.50	6.79	2.32	1291612

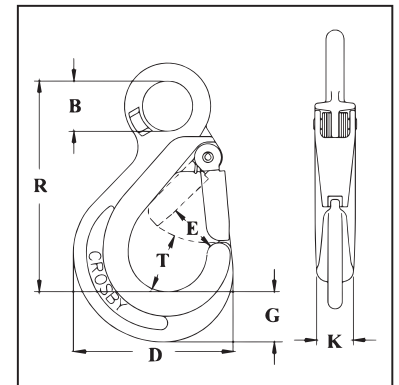
* Ultimate Load is 4 times the Working Load Limit.

Chain & Accessories



S-315A
Eye Chain Hook

- Hook is Forged Alloy Steel - Quenched and Tempered.
- Individually Proof Tested at 2-1/2 times the Working Load Limit with certification
- Crosby recommends grinding the WLL (which is 5:1 Design Factor) off the hook when using with Grade 80 chain.
- Integrated heavy duty latch.
- Large throat opening.
- Anti-fouling due to carefully designed contours.
- "Engineered Flat" for use with S-1325A Coupler Link.
- Meets ASTM A-952 for Grade 80 chain fittings
- Fatigue rated.
- "Look for the color Gold – Crosby Alloy Hooks."



Fatigue Rated

S-315A Eye Chain Hook with Integrated Latch

Chain Size		S-315A Stock No.	Grade 80 Alloy Chain Working Load Limit (lb) 4:1*	Working Load Limit for Wire Rope (Tons) 5:1	Weight Each (lb)	Dimensions (in)						Replacement Latch Stock No.	
(in)	(mm)					B	D	E	G	K	R		T
-	6	1029820	2500	1	.56	.79	2.60	.81	.79	.63	3.33	1.02	1291332
1/4 - 5/16	7 - 8	1029825	4500	2	1.31	1.10	3.50	1.08	1.10	.81	4.62	1.28	1291402
3/8	10	1029830	7100	3	2.60	1.42	4.35	1.42	1.16	.94	6.20	1.66	1291472
1/2	13	1029835	12000	5	4.70	1.81	5.45	1.52	1.67	1.16	7.33	1.94	1291542
5/8	16	1029840	18100	7	8.55	2.20	6.56	1.91	2.05	1.50	8.94	2.32	1291612

* Ultimate Load is 4 times the Working Load Limit.

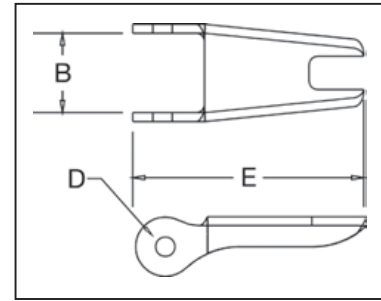
Crosby® Hook Latch Kits



S-4320

Replacement Latch Kit

- Heavy duty stamped latch interlocks with the hook tip.
- High cycle, long life spring.
- Can be made into a “Positive Locking” Hook when proper cotter pin is utilized.
- Latch kits shipped unassembled and individually packaged with instructions.



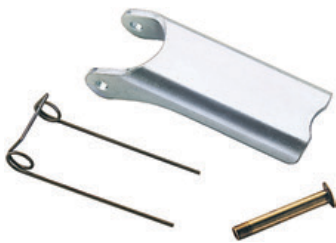
IMPORTANT: The new S-4320 Latch Kit will not fit the old style 319, 320 and 322 hooks



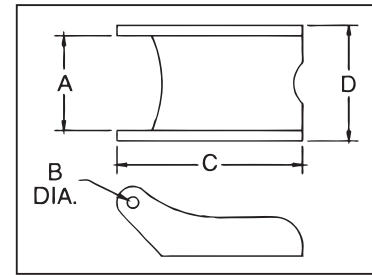
S-4320 Replacement Latch Kit for 319N (new), 320N, 322N and 339N Hooks

Hook Size (t)			Hook ID Code	S-4320 Stock No.	SS-4320 Stock No.*	Weight Each (lb)	Dimensions (in)		
Carbon	Alloy	Bronze					B	D	E
3/4	1	.5	D	1096325	1097100	.03	.50	.15	1.44
1	1-1/2	.6	F	1096374	1097109	.04	.54	.17	1.56
1-1/2	2	1	G	1096421	1097118	.04	.63	.17	1.66
2	3	1.4	H	1096468	1097127	.06	.66	.17	1.91
3	5	2	I	1096515	1097136	.10	.83	.20	2.31
5	7	3.5	J	1096562	1097145	.15	1.04	.20	2.88
7-1/2	11	5	K	1096609	1097154	.28	1.25	.27	3.56
10	15	6.5	L	1096657	1097163	.33	1.35	.27	3.81
15	22	10	N	1096704	1097172	.84	1.66	.39	5.18

* SS-4320 is Stainless Steel construction with cad plated steel nuts.



- To be used on A-327 and A-339 Grade 8 Sling Hooks.
- Latch Kits shipped unassembled and individually packaged with instructions.

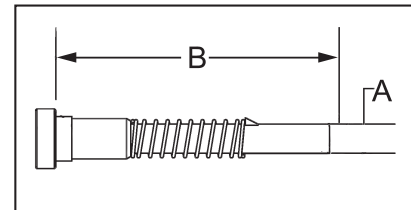


S-4088 Alloy Hook Latch Kits

Hook Chain Size (in)	S-4088 Stock No.	Weight Each (lb)	Dimensions (in)			
			A	B	D	D
9/32 (1/4)	1090250	.06	.78	.16	2.03	.94
3/8	1090251	.14	1.03	.19	2.69	1.25
1/2	1090252	.15	1.03	.19	3.00	1.25
5/8	1090253	.15	1.03	.19	3.25	1.25
3/4	1090254	.15	1.53	.26	4.13	1.88
7/8	1090255	.15	1.53	.26	4.66	2.00



- Latch Kits shipped unassembled and individually packaged with instructions.
- For use only with Crosby L-1338 and L-1358 Grab Hooks (page 233).



S-4338 Grab Hook Latch Kits

Hook Size		S-4338 Stock No.	Weight Each (lb)	Dimensions (in)	
(in)	(mm)			A	B
1/4	7	1048426	.02	.18	1.59
5/16	8				
3/8	10	1048435	.02	.18	1.78
1/2	13	1048444	.04	.25	2.25
5/8	16	1048453	.07	.31	2.59



YOU ASKED FOR IT — CROSBY DELIVERED

The Painting of Our Platinum Line of Chain Fittings is Now Complete

The platinum color of the Crosby Lok-A-Loy® visually identifies the chain connector as Grade 100. The new finish extends the life of the product by providing added protection from exposure to harsh environments such as salt water and other corrosive substances. Adding a durable hard finish to our industry leading Lok-A-Loy® design is one more reason Crosby should be your choice for premium chain fittings and accessories.



Before

After

Painted Crosby A-1337 Lok-A-Loys

- Improved corrosion resistance
- All sizes, 9/32" (7 mm) through 1-1/4" (32 mm) are Grade 100
- Locking system that provides for simple assembly and disassembly – no special tools needed
- Meets ASTM A-952-96 standards for Grade 100 fittings
- Individually proof tested at 2-1/2 times Working Load Limit with certification
- Forged alloy steel – Quenched and Tempered
- Fatigue rated

Crosby 8/10™

Fatigue Rated™

"QT"
QUENCHED & TEMPERED

Crosby®

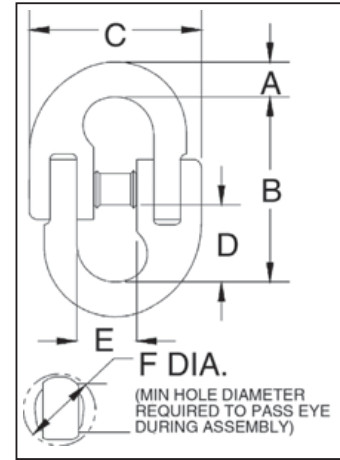
thecrosbygroup.com

Crosby® Connecting Links



A-336
Connecting Link

- Forged Alloy Steel - Quenched and Tempered.
- Individually Proof Tested at 2-1/2 times the Working Load Limit with certification
- Easy to assemble - see instructions on page 276.



A-336 LOK-A-LOY® 6 Connecting Link

Chain Size (in)	A-336 Stock No.	Working Load Limit (lb)*	Weight Each (lb)	Dimensions (in)					Diameter of Hole to Accept Link (in)
				A	B	C	D	E	
1/4	1014397	3250	.24	.31	2.06	1.69	.78	.78	.50
3/8	1014413	6600	.58	.45	2.72	2.31	1.06	1.09	.66
1/2	1014431	11300	1.20	.58	3.34	3.16	1.28	1.41	.88
5/8	1014459	16500	2.42	.78	3.91	3.94	1.56	1.69	1.06
3/4	1014477	23000	3.89	.89	4.84	4.44	1.97	2.00	1.19
7/8	1014495	28750	6.08	1.00	5.81	5.31	2.38	2.12	1.38
1	1014510	38750	7.03	1.08	6.48	6.07	2.84	2.55	1.47
1-1/4	1014538	57500	13.20	1.38	8.48	7.65	3.77	3.77	1.73

* Ultimate Load is 4 times the Working Load Limit.

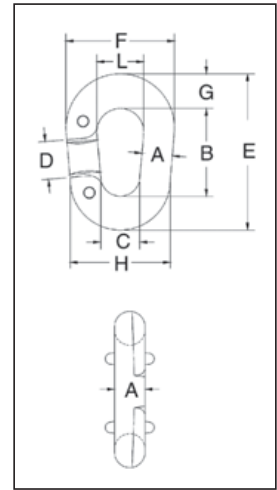


NOTE: The WLL of the A-336 is less than Grade 80 chain ratings. When using in Grade 80 chain slings, ASME B30.9c requires that the Working Load Limit of a sling must not exceed the lowest Working Load Limit of the components in the system.



G-334
Replacement Link

- Forged Steel - Quenched and Tempered.
- Has larger inside dimensions making it easier to attach hooks or other fittings to the chain
- An exclusive Crosby product.
- After making connections, rivets must be peened.



G-334 Pear Shape “Missing Link”® Replacement Links

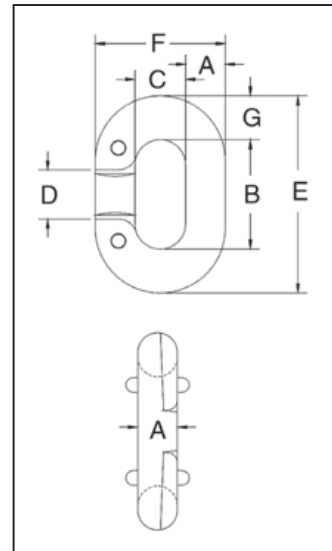
Chain Size (in)	Stock No. G-334 Galv.	Working Load Limit (lb)*	Weight Per 100 (lb)	Dimensions (in)									
				A	B	C	D	E	F	G	H	L	
3/8	1013432	1850	25.00	.41	2.00	.56	.81	2.94	1.63	.47	1.38	.81	
1/2	1013450	3300	50.00	.50	2.50	.69	1.00	3.63	2.00	.56	1.69	1.00	
5/8	1013478	5000	75.00	.63	2.75	.81	1.06	4.00	2.38	.63	2.06	1.13	
3/4	1013496	7100	125.00	.75	3.13	1.00	1.13	4.75	2.75	.81	2.50	1.25	
7/8	1013511	9600	200.00	.88	3.69	1.25	1.38	5.56	3.25	.94	3.00	1.50	

* Ultimate Load is 4 times the Working Load Limit. ** Rivets Only - No interlocking lugs. † Has reinforced rivet holes. All sizes have countersunk rivet holes.
Not Suitable for use with Grade 80 or Grade 100 chain and chain slings used in overhead lifting.



G-335
Replacement Link

- Forged Steel - Quenched and Tempered.
- Integral rivets join the two halves.
- After making connections, rivets must be peened.



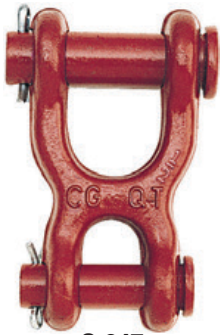
Meets or exceeds the performance requirements of Federal Specifications RR-C-271G, type II, except for those provisions required of the contractor. For additional information, see page 452.

G-335 “Missing Link”® Replacement Links

Chain Size (in)	Stock No. G-335 Galv.	Working Load Limit (lb)*	Links Per Box	Weight Per 100 (lb)	Dimensions (in)						
					A	B	C	D	E	F	G
**1/4	1013110	1325	10	6.25	.28	.88	.44	.44	1.50	1.00	.31
**5/16	1013138	1950	10	12.50	.34	.94	.47	.47	1.69	1.16	.38
3/8	1013156	2750	10	20.00	.41	1.13	.56	.56	2.06	1.38	.47
7/16	1013174	3625	10	27.50	.47	1.28	.59	.59	2.34	1.53	.53
1/2	1013192	4750	10	37.50	.53	1.47	.66	.66	2.66	1.72	.59
5/8	1013236	7250	10	72.50	.66	1.81	.78	.81	3.31	2.09	.75
3/4	1013254	10250	10	122.50	.78	2.13	.94	1.06	3.88	2.50	.88
7/8	1013272	12000	Bulk	175.00	.91	2.50	1.13	1.13	4.50	2.94	1.00
† 1	1013290	15500	Bulk	250.00	1.03	2.75	1.25	1.25	5.00	3.31	1.13

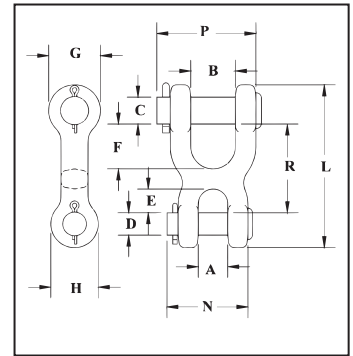
* Ultimate Load is 4 times the Working Load Limit. ** Rivets Only - No interlocking lugs. † Has reinforced rivet holes. All sizes have countersunk rivet holes.
Not Suitable for use with Grade 80 or Grade 100 chain and chain slings used in overhead lifting.

Crosby® Connecting Links



S-247
Double Clevis Link

- All pins Alloy Steel - Quenched and Tempered.
- Body is forged and heat treated carbon steel.
- Designed for linking all popular sizes of Grade 3 and Grade 4 chain to rings, end links, eye hooks, pad eyes, tractor eye bolts, etc.
- Features quick and easy assembly.



S-247 Double Clevis Link

Chain Size (in)	S-247 Stock No.	Working Load Limit (lb)*	Weight Each (lb)	Dimensions (in)											
				A	B	C	D	E	F	G	H	L	N	P	R
1/4	1013021	2600	.38	.50	.75	.50	.31	.38	.75	1.00	.81	2.81	1.38	1.66	1.50
5/16-3/8	1013049	5400	.81	.56	1.00	.63	.44	.47	1.00	1.19	1.00	3.53	1.75	2.25	1.91
7/16	1013067	7200	1.25	.69	1.13	.69	.56	.59	1.09	1.31	1.19	4.06	2.00	2.50	2.19
1/2	1013085	9200	1.56	.81	1.25	.75	.63	.68	1.25	1.44	1.31	4.53	2.25	2.75	2.47

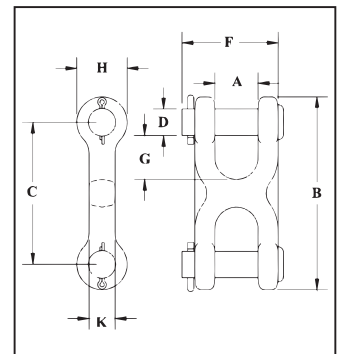
* Ultimate Load is 4 times the Working Load Limit.

Not Suitable for use with Grade 80 or Grade 100 chain and chain slings used in overhead lifting.



S-249
Twin Clevis Link

- Available in three popular sizes.
- Body is forged and heat treated carbon steel.
- All pins Alloy Steel - Quenched and Tempered.
- Features quick and easy assembly.
- Twin Clevis design provides a variety of uses and can be used with Grade 3, Grade 4 and Grade 7 chain.



S-249 Twin Clevis Link

Chain Size (in)	S-249 Stock No.	Working Load Limit (lb)*	Weight Each (lb)	Dimensions (in)							
				A	B	C	D	F	G	H	K
1/4-5/16	1012861	4700	.31	.47	2.50	1.56	.38	1.31	.43	.94	.50
3/8	1012889	6600	.44	.53	2.81	1.81	.44	1.53	.50	1.00	.56
7/16-1/2	1012905	11300	.98	.65	3.62	2.31	.56	1.91	.63	1.31	.81

* Ultimate Load is 4 times the Working Load Limit.

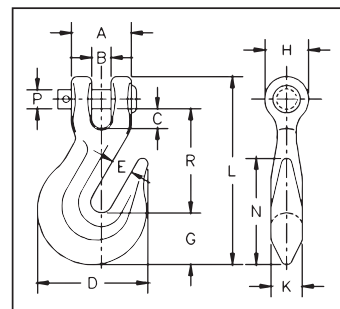
Not Suitable for use with Grade 80 or Grade 100 chain and chain slings used in overhead lifting.

Chain & Accessories



H-330 / A-330
Clevis Grab Hook

- Forged Steel - Quenched and Tempered.
- Design factor is 4:1.
- Features quick and easy assembly.
- H-330 designed for Grade 4 chain.
- A-330 designed for Grade 7 chain.



H-330 / A-330 Clevis Grab Hooks

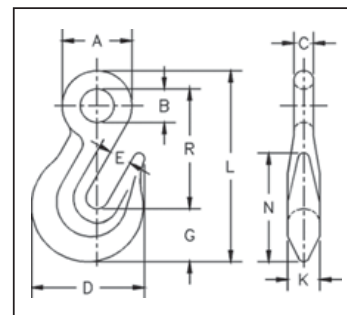
Chain Size (in)	Stock No.		Working Load Limit (lb)		Weight Each (lb)	Dimensions (in)											
	H-330 Carbon	A-330 Alloy*	H-330 Carbon	A-330 Alloy		A	B	C	D	E	G	H	K	L	N	P	R
1/4	1027105	1027249*	2600	3500	.36	1.00	.32	.31	1.81	.34	.88	.72	.47	3.05	1.75	.31	1.64
5/16	1027123	1027267*	3900	4700	.62	1.22	.43	.36	2.12	.44	.97	.91	.59	3.66	2.06	.38	2.02
3/8	1027141	1027285*	5400	7100	1.00	1.42	.48	.49	2.53	.50	1.17	1.00	.72	4.42	2.34	.44	2.41
7/16	1027169	1027301	7200	8750	1.31	1.66	.66	.62	3.09	.56	1.31	1.13	.69	4.94	2.66	.56	2.75
1/2	1027187	1027329*	9200	12000	2.22	1.88	.57	.51	3.56	.66	1.53	1.25	.78	5.72	2.97	.63	3.19
5/8	1027203	1027347	13000	18100	4.41	2.31	.71	.67	4.39	.78	1.78	1.56	1.09	6.83	4.31	.75	4.09
3/4	1027221	1027365	20200	24700	6.50	2.62	.94	.94	5.22	.94	2.13	1.88	1.31	8.13	5.09	.88	4.63

* These A-330 hooks are forged with an "8" designating Grade 80, and are suitable for use with Grade 8 chain in overhead lifting applications as long as hook is proof-tested as part of the chain sling assembly or as an individual component per ASME B30.9. We recommend the use of the A-338 which is proof tested and supplied with a proof test certificate



H-323 / A-323
Eye Grab Hook

- Forged Steel - Quenched and Tempered.
- Design Factor is 4:1.
- H-323 designed for Grade 4 chain.
- A-323 designed for Grade 7 chain.



H-323 / A-323 Eye Grab Hooks

Chain Size (in)	Stock No.		Working Load Limit (lb)		Weight Each (lb)	Dimensions (in)										
	H-323 Carbon	A-323 Alloy*	H-323	A-323		A	B	C	D	E	G	K	L	N	R	
1/4	1026204	1026384*	2600	3500	.28	1.09	.53	.31	1.81	.34	.88	.47	3.05	1.75	1.88	
5/16	1026222	1026400*	3900	4700	.45	1.31	.62	.38	2.12	.44	.97	.59	3.59	2.06	2.28	
3/8	1026240	1026428*	5400	7100	.79	1.56	.75	.44	2.53	.50	1.17	.72	4.28	2.34	2.69	
1/2	1026286	1026464*	9200	12000	1.75	1.94	.88	.53	3.56	.66	1.53	.78	5.44	2.97	3.38	
5/8	1026302	1026482*	13000	18100	3.25	2.48	1.16	.66	4.41	.79	1.89	1.16	6.82	4.25	4.25	
3/4	1026320	1026507	20200	24700	5.94	2.88	1.38	.75	5.22	.94	2.13	1.31	8.06	5.09	5.16	

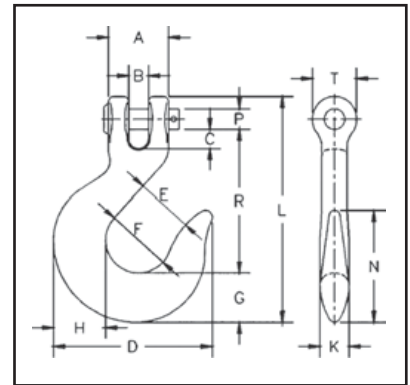
* These A-330 hooks are forged with an "8" designating Grade 80, and are suitable for use with Grade 8 chain in overhead lifting applications as long as hook is proof-tested as part of the chain sling assembly or as an individual component per ASME B30.9. We recommend the use of the A-338 which is proof tested and supplied with a proof test certificate

Crosby® Slip Hooks



H-331 / A-331
Clevis Slip Hook

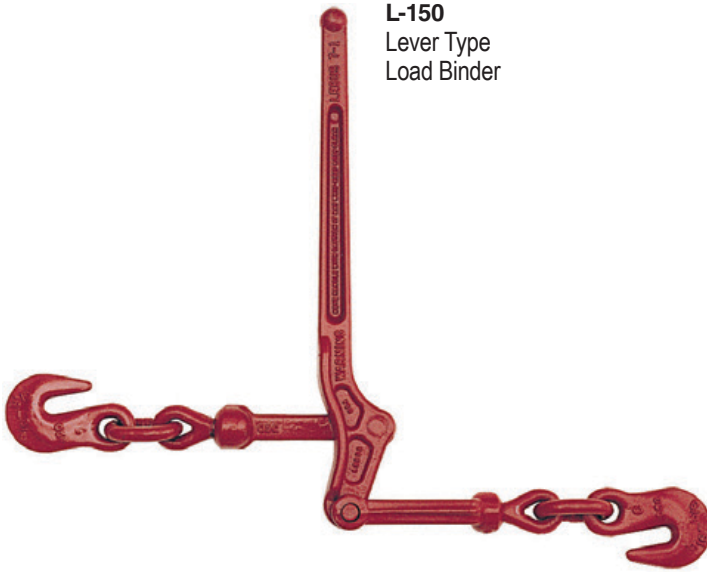
- Forged Carbon Steel or Forged Alloy Steel – Quenched and Tempered.
- All pins are Alloy Steel – Quenched and Tempered.
- Not suitable for use with Grade 80 chain and chain slings used in overhead lifting. For slings or lifting chains, Grade 80 or 100 alloy components are recommended.



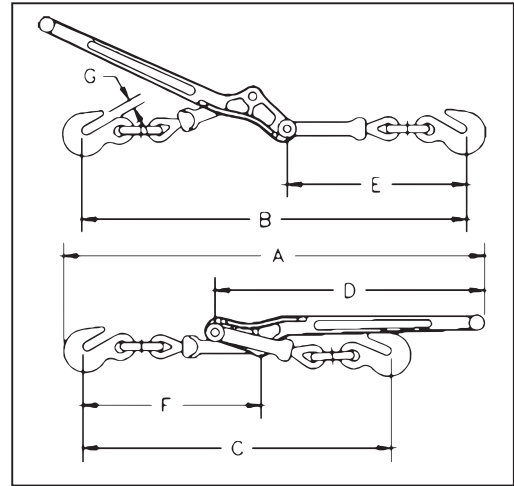
H-331 / A-331 Clevis Slip Hooks

Chain Size (in)	Stock No.		Working Load Limit (lb)*		Weight Each (lb)	Dimensions (in)													
	H-331 Carbon	A-331 Alloy	H-331 Carbon	A-331 Alloy		A	B	C	D	E	F	G	H	K	L	N	P	R	T
1/4	1027383	1027524	1950	2750	.55	1.06	.32	.29	2.75	.94	1.19	.81	.88	.50	3.95	2.13	.31	2.58	.81
5/16	1027409	1027542	2875	4300	.79	1.22	.43	.34	3.06	1.06	1.25	.94	1.00	.56	4.52	2.25	.38	2.87	.97
3/8	1027427	1027560	4000	5250	1.21	1.38	.45	.44	3.63	1.31	1.50	1.13	1.19	.66	5.15	2.56	.44	3.25	1.06
7/16	1027445	1027588	5000	7000	2.06	1.73	.59	.60	4.34	1.56	1.81	1.38	1.44	.81	5.97	3.06	.56	3.70	1.19
1/2	1027463	1027604	6500	9000	2.75	1.88	.57	.53	4.81	1.69	1.94	1.56	1.63	.91	6.53	3.44	.63	4.00	1.31
5/8	1027481	1027622	9250	13500	4.75	2.31	.71	.71	5.63	2.00	2.38	1.81	1.94	1.09	7.89	4.00	.75	4.94	1.56
3/4	–	1027640	–	19250	11.28	3.19	1.18	1.29	7.38	2.50	3.00	2.38	2.50	1.44	10.02	5.06	1.00	6.09	2.09

* Ultimate Load is 4 times the Working Load Limit.



L-150
Lever Type
Load Binder



- Extra heavy construction at leverage point to prevent spreading. Heel of binder toggles away from load, permitting easy release.
- Ball and socket swivel joints at hook assemblies permit a straight line pull.
- Binders shown with Proof Loads have been individually proof tested to values shown, prior to shipment.
- Meets or exceeds requirements of US DOT FMCSA Part 393 Subpart I.

Load Rated®

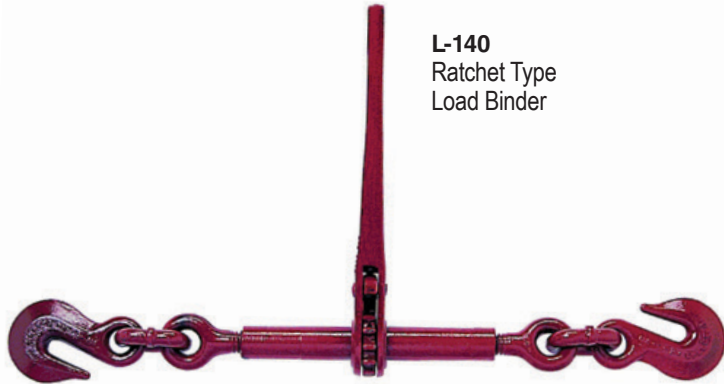


SEE APPLICATION AND WARNING INFORMATION
On Pages 271
Para Español: www.thecrosbygroup.com

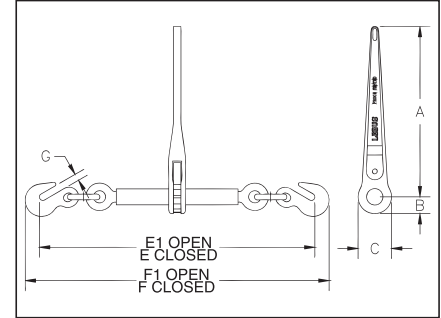
L-150 Standard Lever Type Load Binders

Model	Stock No.	Std. Pkg.	Min-Max Chain Size (in)	Working Load Limit (lb)	Proof Load (lb)	Ultimate Load (lb)	Weight Each (lb)	Handle Length (in)	Take Up (in)	Dimensions (in)						
										A	B	C	D	E	F	G
7-1	1048128	4	5/16-3/8	5400	10800	19000	7.02	16.00	4.50	24.13	22.13	17.88	16.00	10.38	10.38	.50
A-1	1048146	4	3/8-1/2	9200	18400	33000	12.47	18.69	4.50	28.75	25.75	21.25	18.69	12.31	12.38	.63
C-1	1048164	4	1/2-5/8	13000	26000	46000	19.68	21.00	4.75	31.25	29.75	25.00	21.00	14.63	13.75	.72

Lebus® Load Binders



L-140
Ratchet Type
Load Binder



- Upgraded for use with Grades 70, 80 and 100 Chain.
- Utilizes standard Crosby A-323 Alloy Eye Grab Hooks.
- New design “one piece” forged handle.
- Continuous take-up feature provides finite adjustment to tie down load.
- One piece assembly, no bolts or nuts to loosen.
- Ratchet spring is rust proofed.
- All load bearing or holding parts forged.
- Easy operating positive ratchet.
- Binders shown with Proof Loads have been individually proof tested to values shown, prior to shipment.
- Meets or exceeds requirements of US DOT FMCSA Part 393 Subpart I.



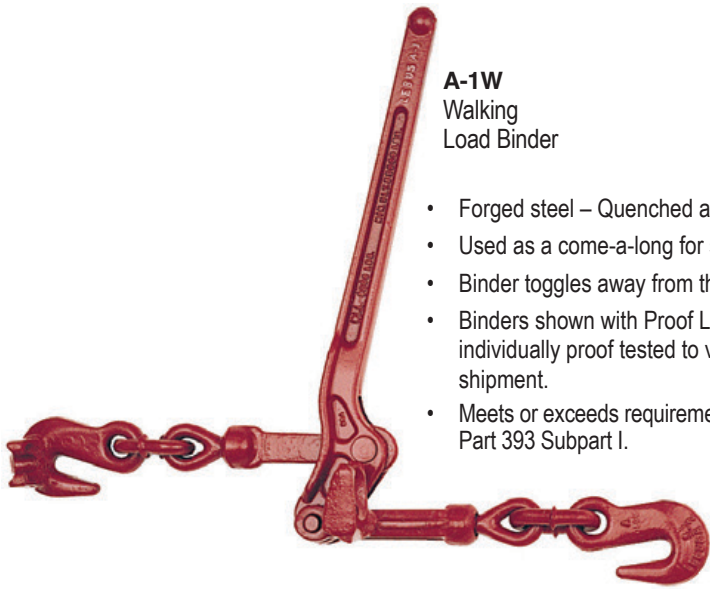
Load Rated

L-140 Standard Ratchet Type Load Binders (Meets or exceeds requirements of US DOT FMCSA Part 393 Subpart I.)

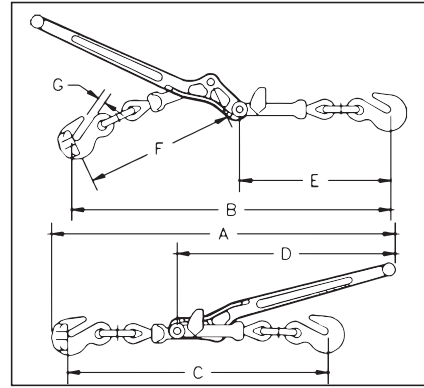
Model	Stock No.	Min-Max Chain Size (in)	Working Load Limit (lb)*	Proof Load (lb)	Weight Each (lb)	Handle Length (in)	Barrel Length (in)	Take Up (in)	Dimensions (in)							
									A	B	C	E	E1	F	F1	G
R-7 **	1048404	5/16-3/8	8800	17600	12.11	14	10	8.0	14.00	1.38	2.75	22.94	30.94	25.13	33.13	.50
R-A **	1048422	3/8-1/2	15000	30000	14.70	14	10	8.0	14.00	1.38	2.75	25.25	33.25	27.63	35.63	.63
R-C ***	1048440	1/2-5/8	16000	32000	14.55	14	10	8.0	14.00	1.38	2.75	26.38	34.38	29.44	37.44	.72

* Ultimate Load is 3 times the Working Load Limit. ** Matches the Working Load Limit of Grade 100 chain for both sizes. *** Matches the Working Load Limit of Grade 100 chain for 1/2" size.

Chain & Accessories



- Forged steel – Quenched and Tempered.
- Used as a come-a-long for short take-up on chain.
- Binder toggles away from the load.
- Binders shown with Proof Loads have been individually proof tested to values shown, prior to shipment.
- Meets or exceeds requirements of US DOT FMCSA Part 393 Subpart I.

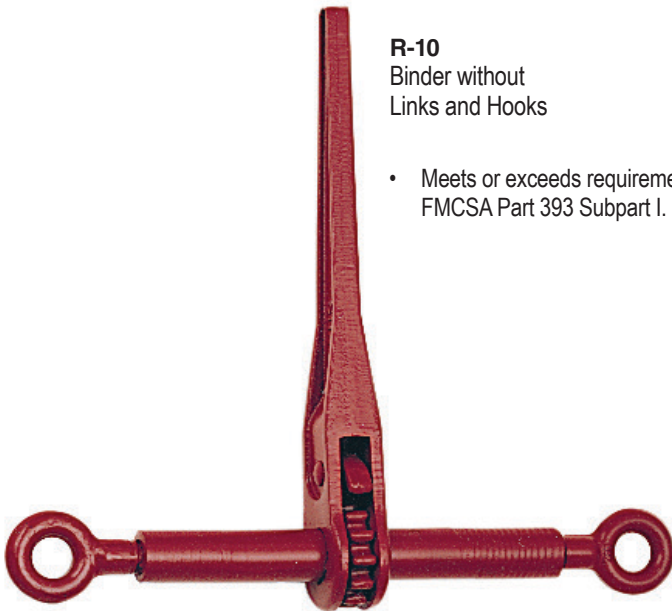


SEE APPLICATION AND WARNING INFORMATION
 On Pages 271
 Para Español: www.thecrosbygroup.com

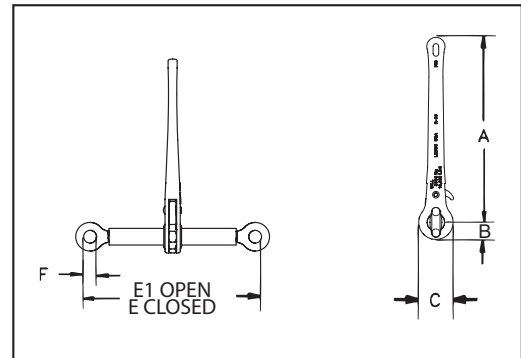


A-1W Walking Load Binders

Model	Stock No.	Chain Size (in)	Working Load Limit (lb)	Proof Load (lb)	Ultimate Load (lb)	Weight Each (lb)	Handle Length (in)	Dimensions (in)						
								A	B	C	D	E	F	G
A-1W	1048388	1/2 only	9200	18400	33000	13.10	18.69	28.75	25.75	21.25	18.69	12.31	12.38	.63



- Meets or exceeds requirements of US DOT FMCSA Part 393 Subpart I.

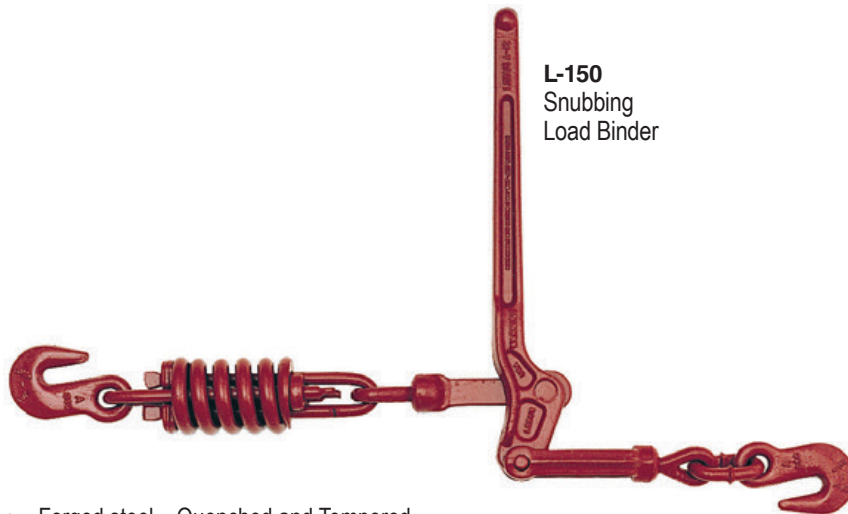


R-10 Binder without Links and Hooks

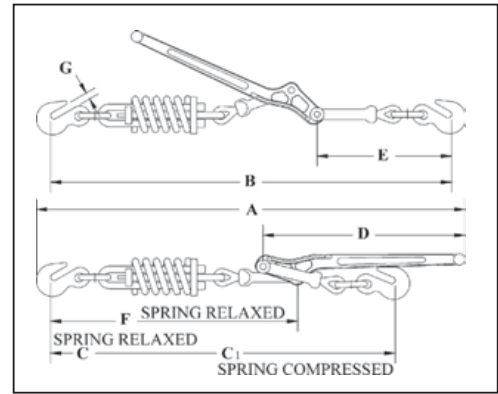
Model	R-10 Stock No.	Working Load Limit (lb)*	Weight Each (lb)	Handle Length (in)	Barrel Length (in)	Take Up (in)	Dimensions (in)					
							A	B	C	E	E1	F
R-10	1048468	16000	8.04	14	10	8.0	14	1.38	2.75	14	22	1.00

* Ultimate Load is 3 times the Working Load Limit.

Lebus® Load Binders



L-150
Snubbing
Load Binder



- Forged steel – Quenched and Tempered.
- Spring cushion for load protection, cushions shock and sway.
- Binder toggles away from the load.



Load Rated

L-150 Snubbing Load Binders

Model	Stock No.	Min-Max Chain Size (in)	Working Load Limit (lb)	Ultimate Load (lb)	Weight Each (lb)	Handle Length (in)	Take Up (in)	Compression Strength of Spring (lb)	Dimensions (in)							
									A	B	C	C1	D	E	F	G
7-12	1048280	5/16 - 3/8	5400	16000	11.25	16.00	4.25	2300	32.75	30.75	28.00	26.50	16.00	10.38	19.00	.50
A-12	1048306	3/8 - 1/2	9200	20000	18.69	18.50	4.50	3300	37.19	34.00	29.50	30.44	18.69	12.31	20.88	.63

Chain & Accessories



C-188 Spectrum 8®
Alloy Boomer Chain

- Heat treated alloy steel.
- Ends fitted with Crosby A-330 Quenched and Tempered alloy clevis grab hook.
- Finish – Self Colored.
- Meets or exceeds requirements of US DOT FMCSA Part 393 Subpart I.

C-188 Spectrum 8® Alloy Boomer Chains

Chain Size (in)	C-188 Stock No.	Working Load Limit (lb)	Standard Length (ft)	Weight Each (lb)
3/8	279889	7100	20	30.28
1/2	279898	12000	20	54.04



L-180
Winchline Tail Chain

- Hooks are Forged – Quenched and Tempered.
- Individually Proof Tested.
- Spectrum 8® Alloy Steel from 3/4" through 1-1/4" (20 - 32mm).
- Meets or exceeds requirements of US DOT FMCSA Part 393 Subpart I.

L-180 Winchline Tail Chain

Wire Rope Diameter (in)*	L-180 Stock No.	Working Load Limit (lb)†	Length (in)	No. of Links	Weight Each (lb)
5/16 - 3/8	1091473	5400	18	11	3.0
1/2 - 5/8	1091482	13000	18	7	6.2
3/4 - 7/8	1091511	34200	24	8	18.2
1 - 1-1/8	1091516	47700	18	5	21.2
1 - 1-1/8	1091525	47700	24	7	23.3
1-1/4	1091532	72300	24	5	40.0

* Recommended for IPS or XIP (EIP), RRL, FC or IWRC wire rope. † Ultimate Load is 3.5 times the Working Load Limit.

Replacement Hooks for Chain Hoists

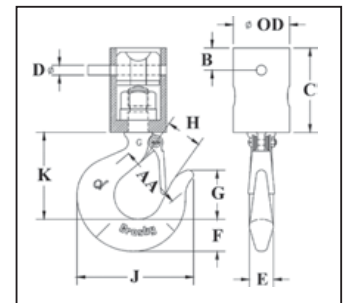
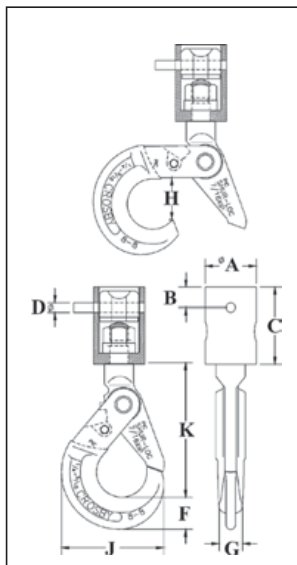


O-318
Chain Nest Hook



O-319
Chain Nest Hook

- Available in Working Load Limits of 1.7, 2.3, and 4.2 Tons.
- Fits 1/4" thru 9/16" hoist chain.
- Hooks are forged alloy steel – Quenched and Tempered.
- Chain connecting pin is alloy.
- A Product Identification Code (PIC) for material traceability, the size, and the name Crosby or "CG" are forged or stamped onto each hook and swivel assembly (chain nest).
- Entire assembly is zinc plated.
- Fitted with ball bearings and is suitable for frequent rotation under load.
- Repair kit available consisting of bearing and spring pin.
- O-318 Hooks utilize Crosby SHUR-LOC® "Positive Locking" hooks. Latch is Self-Locking when hook is loaded.
- O-319 Hooks utilize Crosby® standard 319 Shank Hooks with the registered **QUIC-CHECK**® marking.
- Replacement latch kits are available.
- Use in corrosive environment requires shank and nut inspection in accordance with ASME B30.10-1.10.4(b)(5)(c).



SEE APPLICATION AND WARNING INFORMATION
 0-318 On Pages 272-273
 0-319 On Pages 142-143
 Para Español: www.thecrosbygroup.com

Chain & Accessories

O-318 Chain Nest Hooks

Chain Size (in)	O-318 Stock No.	Working Load Limit (Tons)*	Weight Each (lb)	Dimensions (in)								
				A	B	C	D	F	G	H	J	K
1/4 - 9/32	1098409	1.7	3.50	1.75	.70	2.62	.31	1.10	.81	1.46	3.50	4.59
5/16 - 3/8	1098427	2.3	6.00	2.13	.70	3.19	.38	1.15	.94	1.83	4.35	5.65
3/8 - 7/16	1098445	4.2	13.75	3.00	1.00	4.38	.50	1.66	1.16	2.11	5.45	7.06
1/2 - 9/16	1098463	4.2	13.75	3.00	1.00	4.38	.63	1.66	1.16	2.11	5.45	7.06

* Ultimate Load is 4 times the Working Load Limit.

O-319 Chain Nest Hooks

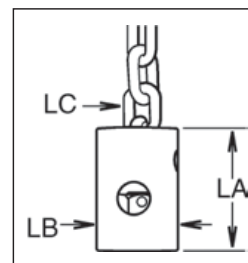
Chain Size (in)	O-319 Stock No.	Working Load Limit (Tons)*	Weight Each (lb)	Dimensions (in)										
				OD	AA	B	C	D	E	F	G	H	J	K
1/4 - 9/32	1098312	1.7	2.55	1.75	2.00	.70	2.62	.31	.75	1.00	1.53	1.00	3.62	2.69
5/16 - 3/8	1098334	2.3	4.00	2.13	2.00	.70	3.19	.38	.84	1.12	1.72	1.12	4.09	3.06
3/8 - 7/16	1098356	4.2	10.00	3.00	2.50	1.00	4.38	.50	1.12	1.44	2.12	1.34	4.84	3.78
1/2 - 9/16	1098378	4.2	10.00	3.00	2.50	1.00	4.38	.63	1.12	1.44	2.12	1.34	4.84	3.78

* Ultimate Load is 4 times the Working Load Limit.

Replacement Hooks for Chain Hoists



- Available in Working Load Limits of 1.7, 2.3, and 4.2 Tons.
- Fits 1/4" through 9/16" hoist chain.
- Hooks are forged alloy steel - Quenched and Tempered.
- A Product Identification Code (PIC) for material traceability, the size, and the name Crosby or "CG" are forged or stamped onto each hook and swivel assembly (chain nest).
- Hooks utilize Crosby standard 319 Shank Hooks with the registered **QUIC-CHECK®** marking.
- Suitable for frequent rotation under load.
- Use in corrosive environment requires shank and nut inspection in accordance with ASME B30.10-1.10.4(b)(5)(c).



Link Chain Nest

- **BL-O** – with self-closing gate. • **BL-P** – with manual-closing gate. • With ball-bearing swivel; attaches to chain by alloy pin.

Hook Size	BL-O Stock No.	BL-P Stock No.	Gate Type	Working Load Limit (Tons)*	Weight Each (lb)	Dimensions (in)		
						LA	LB	LC
4: 1/4 - 9/32	1051409	1051508	PIN-LOK	1.70	2.5	2.65	1.75	1/4 - 9/32
5: 5/16 - 3/8	1051442	1051541	ROLLOX	2.30	4.5	3.00	2.25	5/16 - 3/8
7: 3/8 - 7/16	1051464	1051563	ROLLOX	4.20	11.0	4.38	3.00	3/8 - 9/16
7: 1/2 - 9/16	1051486	1051585	ROLLOX	4.20	11.0	4.38	3.00	3/8 - 9/16

* Ultimate Load is 4 times the Working Load Limit.



- Open Swivel Bail for attachment to link chain.
 - **BL-E** – with self-closing gate. • **BL-G** – with manual-closing gate.
- Suitable for infrequent, non-continuous rotation under load.
- Use in corrosive environment requires shank and nut inspection in accordance with ASME B30.10-1.10.4(b)(5)(c).

Open Swivel Bail

Hook Size	BL-E Stock No.	BL-G Stock No.	Gate Type	Working Load Limit (Tons)*	Weight Each (lb)	Dimensions (in)			
						UA	UB	UC	UD
3	1051607	1051706	PIN-LOK	1.40	1.8	2.08	2.31	.52	.38
4	1051618	1051717	PIN-LOK	1.70	2.1	2.14	2.31	.52	.38
5	1051629	1051728	ROLLOX	2.30	3.2	2.56	2.63	.62	.44

* Ultimate Load is 4 times the Working Load Limit.

